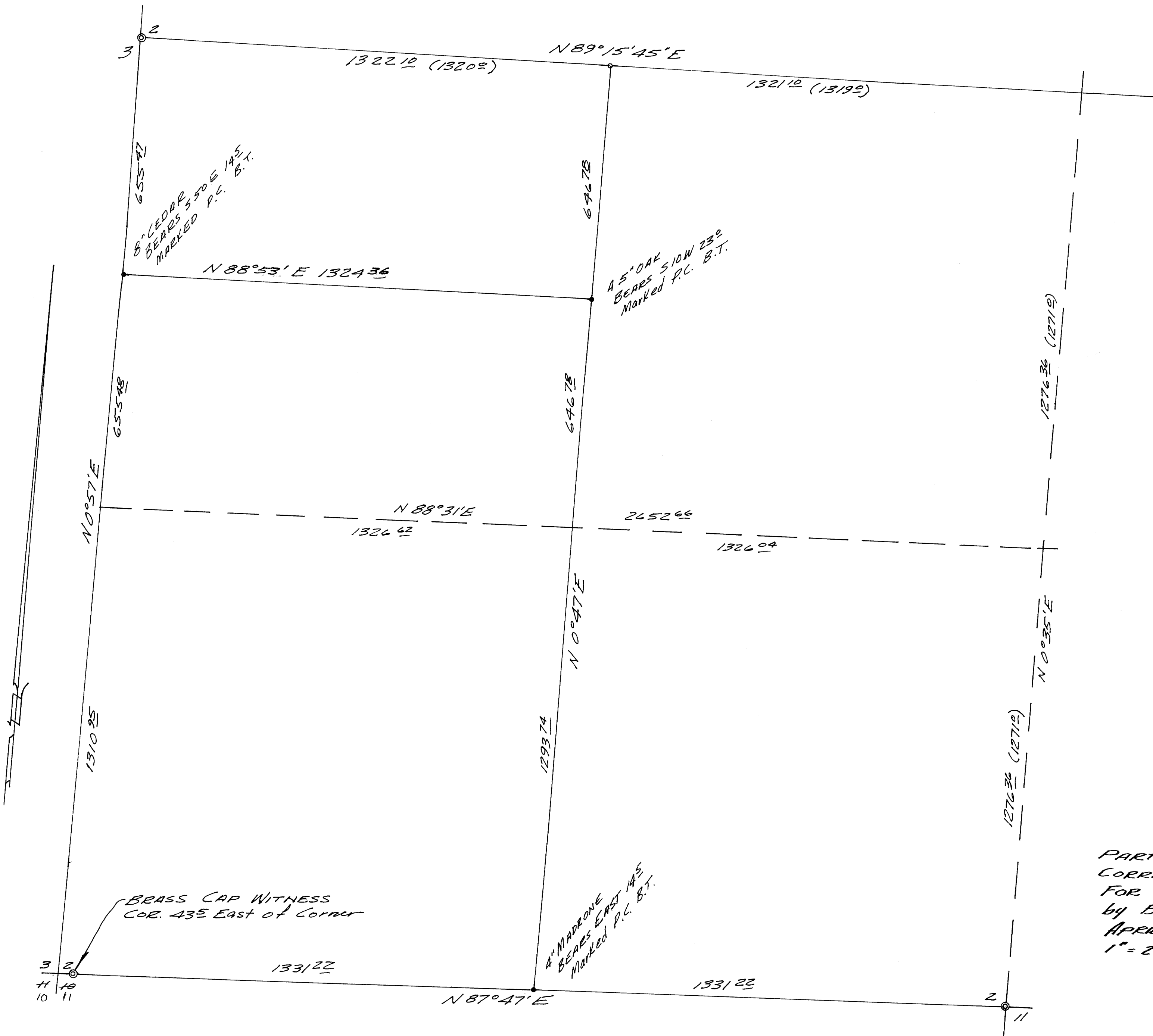


FILED
RECEIVED

MAY 24 1972

COUNTY SURVEYOR
DOUGLAS COUNTY, ORE.

MAP FILE...M.45...7....



- ⊙ - FOUND BRASS CAP & B. TREES
- - FOUND WOOD STAKE & B. T. (STUMP) SEE M41-59
- - Set 5/8" Iron Rod

PARTIAL SUBDIVISION OF SEC 2, T.26S. R.3W. W.M.
 CORRECTS C.S. M41-59
 FOR LARRY COLLINS
 by BRUCE ROGERS
 APRIL, 1972
 1" = 200'

REVIEWED
 & RECORDED
 LAND SURVEY
 Bruce R. Rogers
 JULY 10 1972
 BRUCE R. ROGERS
 630

MAP FILE...M.45...7....