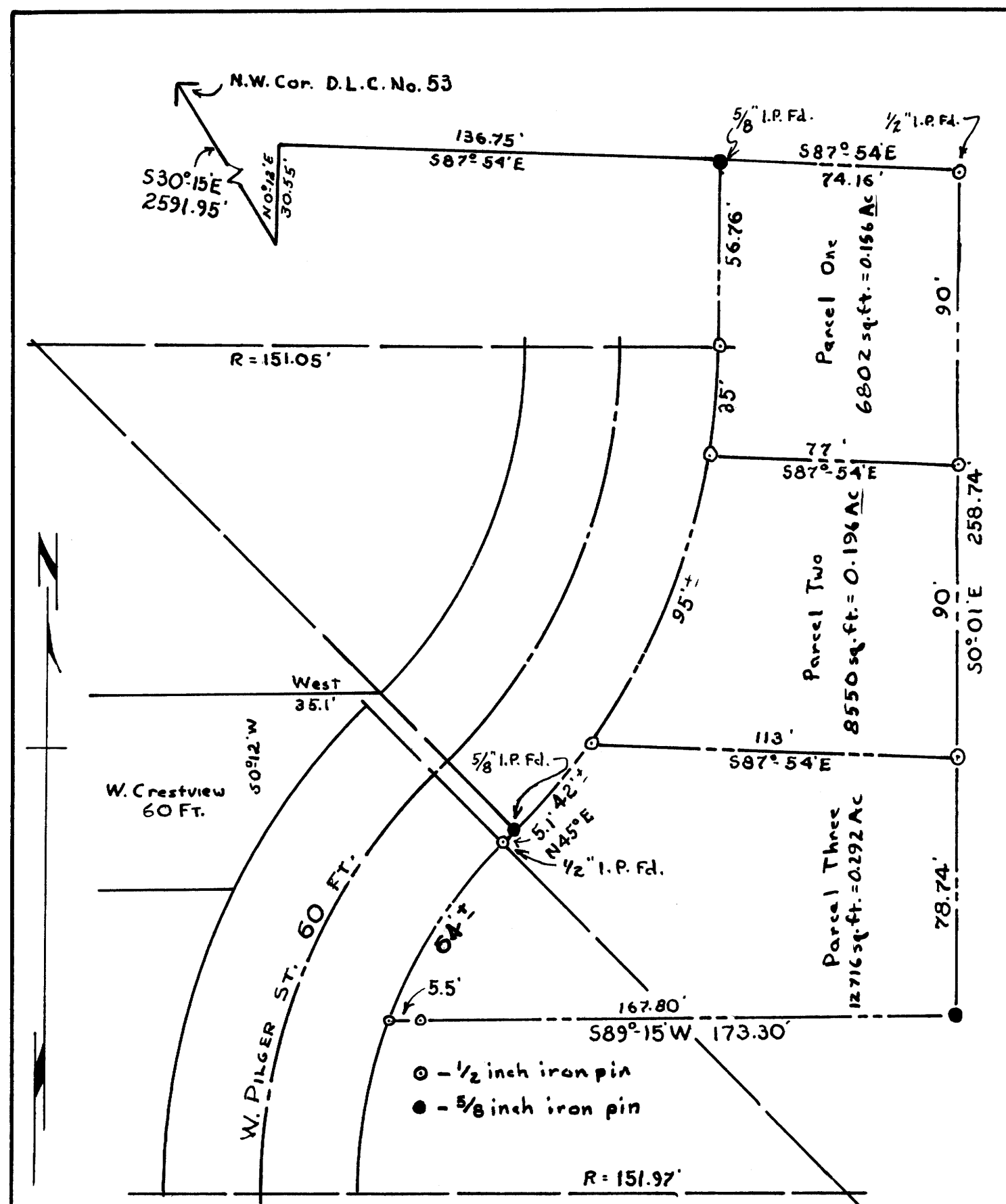


MAP FILE M75-64



# MINOR LAND PARTITION

## SHORT PARCELS

W. PILGER ST. W. ROSEBURG, ORE.  
Sect. 23-T275-R6W.W.M.

### DEED DESCRIPTION

Beginning at a 5/8 inch iron pin located S30°15'E 2591.95 ft., N0°12'E 30.55 ft., and S87°54'E 136.75 ft. from the North West corner of J. Leiser D.L.C. 53 in Sect. 23, T275, R6W.W.M. in Douglas County Oregon; thence S87°54'E 74.16 ft. to a 1/2 inch iron pin; thence S0°01'E 258.74 ft. to a 5/8 inch iron pin; thence S89°15'W 173.30 ft. to a 1/2 inch iron pin on the easterly right-of-way line of W. PILGER STREET; thence northerly along said right-of-way line by a curve to the right 64 ft. to a 1/2 inch iron pin; thence N45°E 3.1 ft. along said right-of-way line to a 5/8 inch iron pin; thence continuing along said right-of-way by a curve to the left to a point a distance of 172 ft. to a 1/2 inch iron pin at the point of tangency; thence N0°01'W 56.76 ft. to the point of beginning containing within said boundaries an area of 0.644 acres more or less.

### ENGINEER'S CERTIFICATE

I, James R. Daugherty, hereby certify that I have surveyed the parcels shown on the adjacent MAP and marked the corners with proper monuments as shown.



*Craig Short*  
CRAIG SHORT  
OWNER

### PLANNING COMMISSION APPROVAL

Approved this 4<sup>th</sup> day of November 1963.

*Elfermann*  
PRESIDENT

*Sandra A. Powers*  
SECRETARY

SCALE 1"=40'

OCT. 4, 1963  
REV. OCT. 16, 1963 JRD.

MAP FILE M75-64