

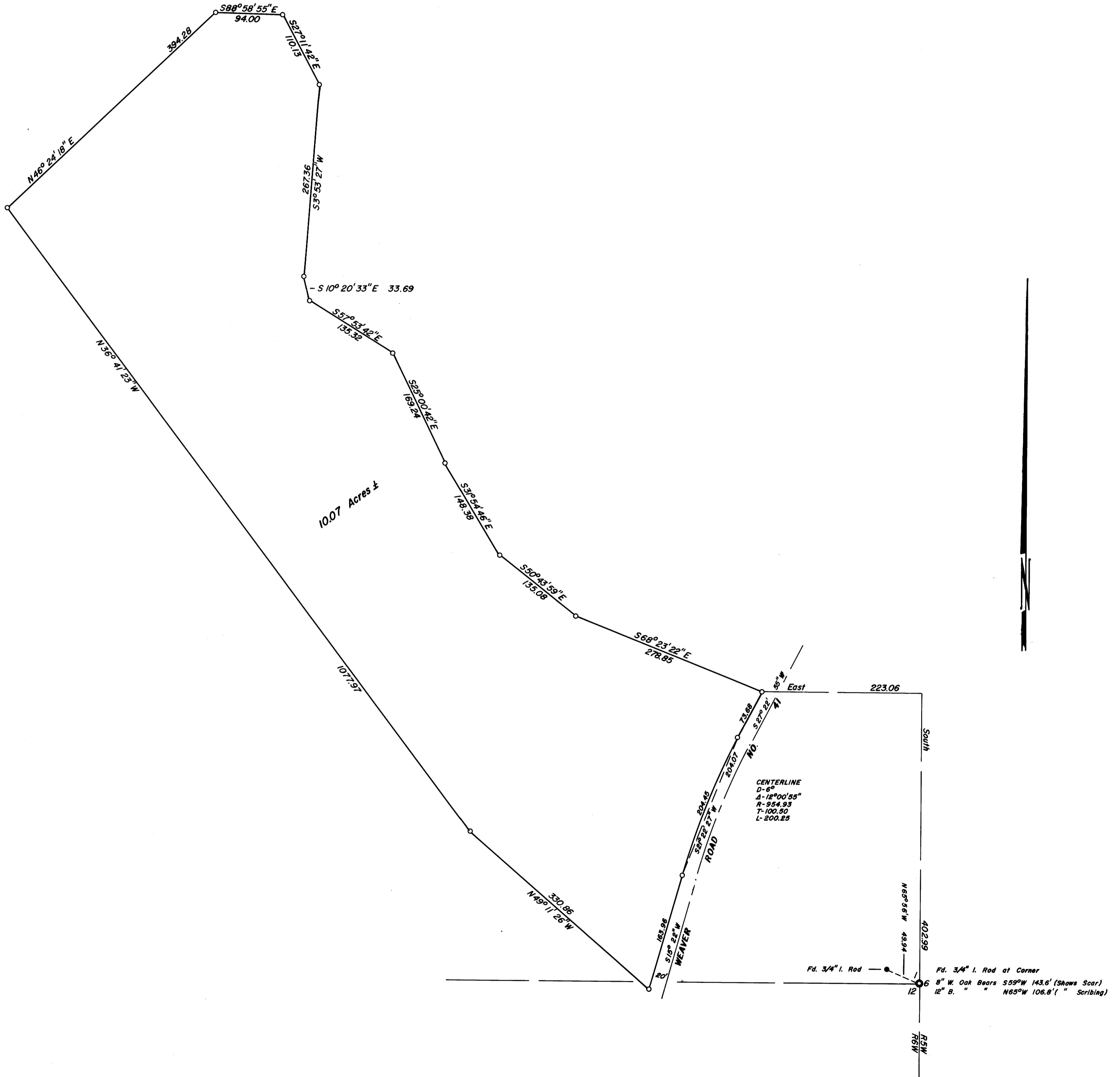
COUNTY SURVEYORS FILE DATA  
DO NOT REMOVE FROM OFFICE

SURVEY IN SECTIONS 1 & 12, TOWNSHIP 30 SOUTH, RANGE 6 WEST, WILLAMETTE MERIDIAN  
Surveyed for James Lewis by Don E. Garrett  
May 1972

Scale 1" = 100'

o - Set 5/8" I. Rod  
Bearings by Solar Observation April 19, 1972

FILED  
MAY 22 1972  
COUNTY SURVEYOR  
CLATSOP COUNTY, OREGON



REGISTERED  
PROFESSIONAL  
LAND SURVEYOR

*Don E. Garrett*  
OREGON  
JULY 14, 1961  
DON E. GARRETT,  
544