

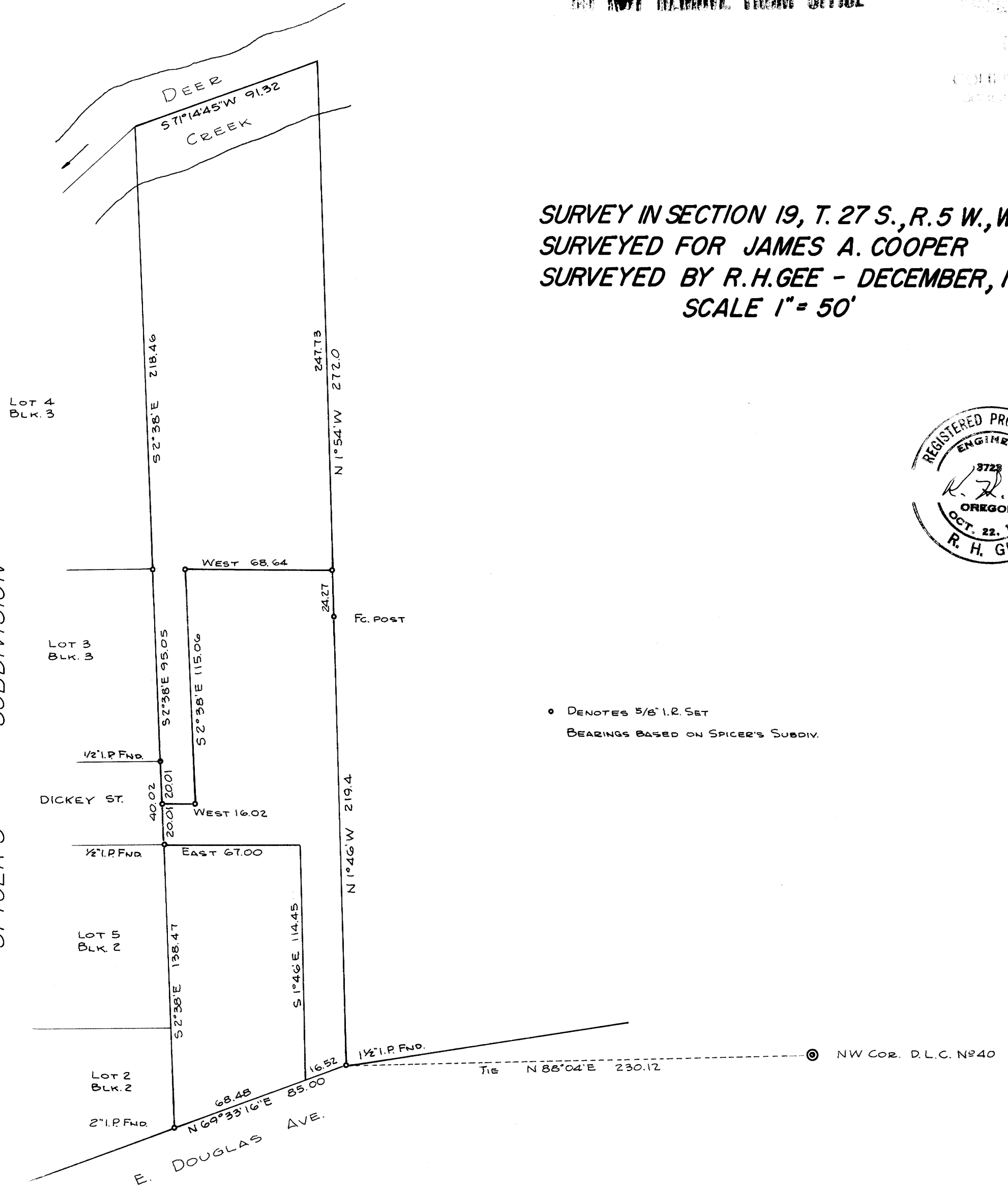
COUNTY SURVEYORS FILE DATA
DO NOT REMOVE FROM OFFICE

FILED
RECEIVED 77
DEC 9 1971
COUNTY SURVEYORS
ASTORIA, OREGON

SURVEY IN SECTION 19, T. 27 S., R. 5 W., W.M.
SURVEYED FOR JAMES A. COOPER
SURVEYED BY R.H.GEE - DECEMBER, 1971
SCALE 1" = 50'



SPICER'S SUBDIVISION



• DENOTES 5/8" I.R. SET
BEARINGS BASED ON SPICER'S SUBDIV.



6-77W

MAP FILE M 44 - 9