

COUNTY SURVEYORS FILE
DO NOT REMOVE FROM OFFICE

SURVEY FOR THE UNITED STATES OF AMERICA

SECTION 5, TOWNSHIP 32 SOUTH, RANGE 3 WEST, WILLAMETTE MERIDIAN

NOVEMBER 15, 1971

SCALE: 1" = 400'

TILLER LAND SURVEY No. 7, CONTRACT No. 003396 N
FIELD BOOKS REFERENCED UNDER CONTRACT No. 003396 N - Books 1 & 2

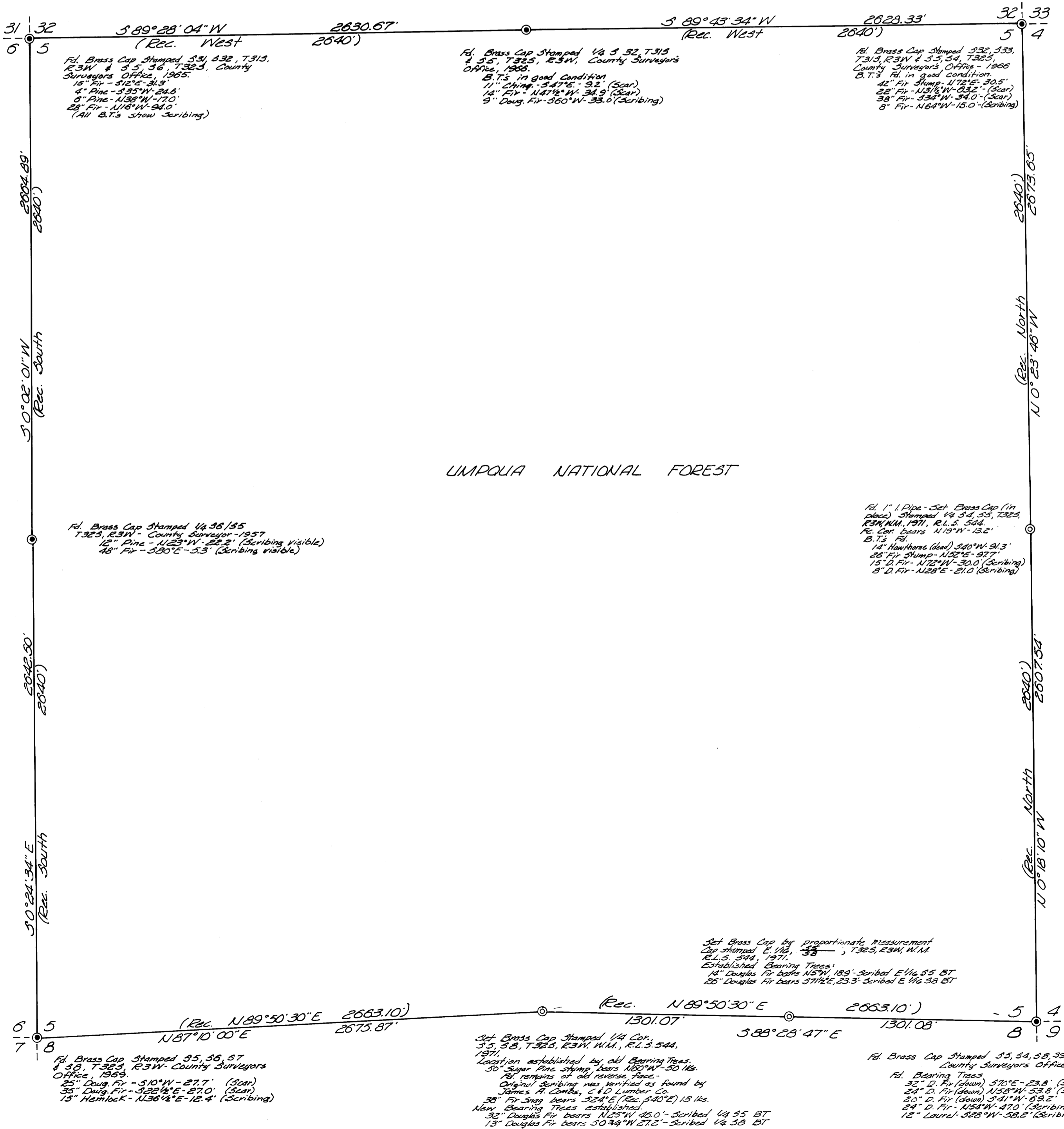
© - Monuments set consist of a 2"x30" galvanized iron pipe, flared at the bottom, with a 3" brass cap riveted to the top.

I, Don E. Garrett, a registered land surveyor in the State of Oregon, hereby certify that this plat and the notes hereon, or attached, are a correct representation of a survey I performed during October and November, 1971, for the U.S. Forest Service, in accordance with the statutes of the State of Oregon and with the Articles of my contract.

FILED
RECEIVED
OCT 6 1971
COUNTY SURVEYOR
CLATSOP COUNTY, OREG.

REGISTERED
OREGON
LAND SURVEYOR
Don E. Garrett
JULY 14, 1961
DON E. GARRETT
544

Bearings are based on a Solar Observation taken October 7, 1971.
Mean Declination - 20°30'



History of original corner establishment

T 32S, R3W, W.M.
1/4 Cor.
5 5
— 0 —
5 8

Corner established in 1871 by W. H. Byars under contract No. 152, dated June 3, 1871.

Original survey record states: I run S 89° 50 1/2' W on true line between Secs. 5 & 8.

- 35.25 Chs. A creek, 2 lks. wide, course NE
- 40.35 Chs. Set 1/4 Sec. post, from which
 - A Sugar Pine, 40 in. diam. bears N 60° W 50 lks. dist.
 - A Fir, 30 ins. diam. bears S 40° E 13 lks dist.

Description of Corner evidence found.

At the location of the 1/4 Cor. I found a 50" diam. sugar Pine stump and a 38" diam. fir snag. The stump had an old yellow tag nailed to the top which stated, "This is a bearing tree". On examining a slab torn from the face of the stump I found the remains of the top and bottom of a reverse face with old axe marks at the bottom. The center portion of the reverse face was missing.

All evidence of bark scribing on the fir snag has been destroyed by axe work.

On Nov. 22, 1971, I accompanied James A. Combs, an employee of the C & D Lbr. Co., to this location. He stated without hesitation that this was the same Sugar Pine stump that he had seen BT scribing in in the period between 1950 & 1955. Attached herewith is a signed statement attesting to this fact.

Description of accessories and monument I used to perpetuate the original location of this corner.

At the position determined by measurement of the original distances from the bearing trees described above I set a 2 in. by 36 in. iron pipe, flared at the bottom, with a 3 in. brass cap riveted to the top. The monument projects approx. 10 ins. above the ground.

I stamped this brass cap -----

1/4 COR.
T32S, R3W, W.M.
5 5
— 0 —
5 8
R.L.S. 544
1971

From the pipe monument the original bearing trees are;

- A sugar Pine, 40 ins. diam. (now 50 in. stump) bears N 60° W 50 lks.
- A fir, 30 ins. diam. (now 38 in. snag) bears S 24° E (Record S 40° E) 13 lks.

I also established new bearing trees as follows:

- A 32 in. diam. D. Fir bears N 25° W 46.0 ft. scribed 1/4 S5 BT
- A 13 in. diam. D. Fir bears S 0 3/4° W 27.2 ft. scribed 1/4 S8 BT

Office of SURVEYOR County of Douglas, State of Oregon.
I hereby certify that the within instrument was filed in this office and recorded on the 8 day of DEC., 1971, at 10 o'clock AM

Signed James W. Byars

REGISTERED
OREGON
LAND SURVEYOR

Don E. Garrett
JULY 14, 1961
DON E. GARRETT
544

S.S. File 55-1224

Map M 44-8

4153

The E 1/16 th. Corner of Secs. 5 & 8, T 32S, R3W, W.M.

This corner was not Established during the original survey of this Sect. 5 which took place in 1871.

T 32S, R3W, W.M.
EAST 1/16 COR.
5 5
5 8

Description of monument and accessories I used to establish the location of this corner.

I determined the location of this corner by proportionate measurement between the Southeast Corner and the South 1/4 Corner of Section 5. At this location I set a 2 in. by 36 in. iron pipe, flared at the bottom, with a 3 in. diam. brass cap riveted to the top. The monument projects approx. 10 ins. above the ground.

E 1/16 COR
T 32S, R3W, W.M.
5 5
5 8
R.L.S. 544
1971

I stamped this brass cap -----

From the pipe I established bearing trees as follows:

A D. Fir, 14 ins. diam. bears N 5° W 18.9 ft. scribed E 1/16 S5 BT

A D. Fir, 26 ins. diam. bears S 71 1/2° E 23.3 ft. scribed E 1/16 S8 BT

Office of the County Surveyor, County of Douglas, State of Oregon.

I hereby certify that the within instrument was filed in this office and recorded on the 8 day of DEC., 1971, at 10 O'clock P.M.

Signed James W. Ryan

REGISTERED
OREGON
LAND SURVEYOR

Now to Garrett
JULY 14, 1961
DON E. GARRETT
544

C.S. File 55 / 224b

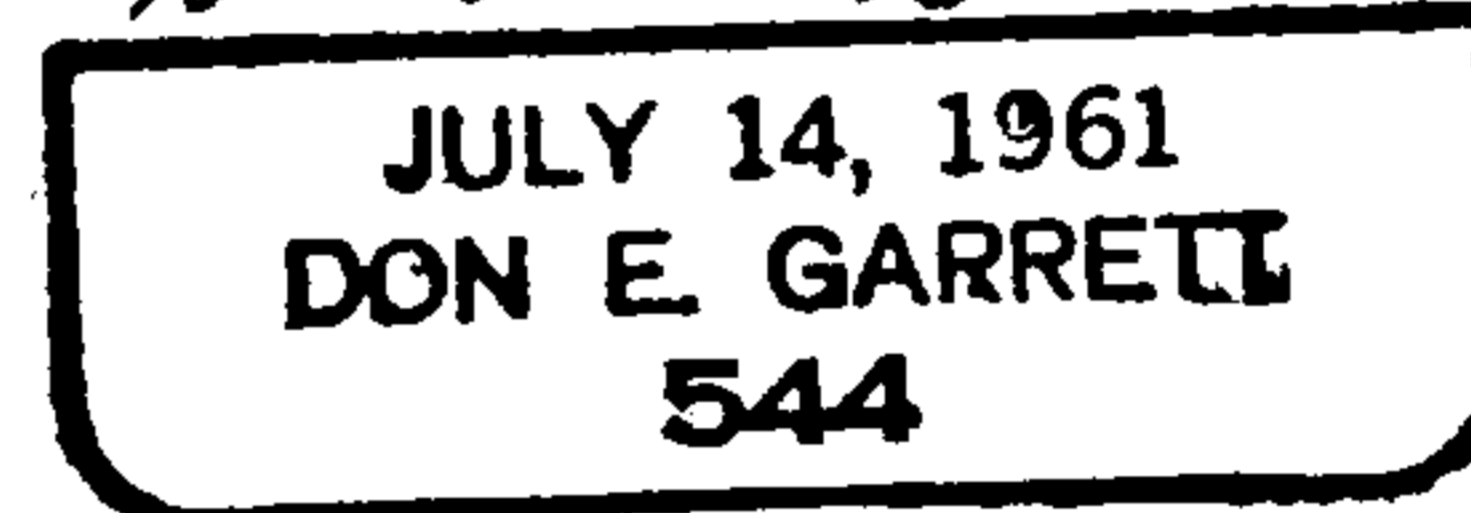
Map File M 44 - 8

I, James A. Combs, do hereby certify that on November 22, 1971, I accompanied Don E. Garrett to the location of the South 1/4 Corner of Section 5, T32S, R3W, W1M, where we examined a fir snag and a large sugar pine stump. I hereby certify that this is the same sugar pine stump in which we found a BT scribe between 1950 and 1955 while running cutting lines for The C & D Lumber Co.

James A. Combs



Don E. Garrett



FILED *[Signature]*
RECEIVED

DEC 8 1971

COUNTY SURVEYOR
DOUGLAS COUNTY, ORE.

C.S. File 55/224c

Map File M 44-8