

COUNTY SURVEYORS FILE DATA  
DO NOT REMOVE FROM OFFICE

FILED  
RECEIVED

SURVEY IN SEC. 4, T28S, R6W, W.M.

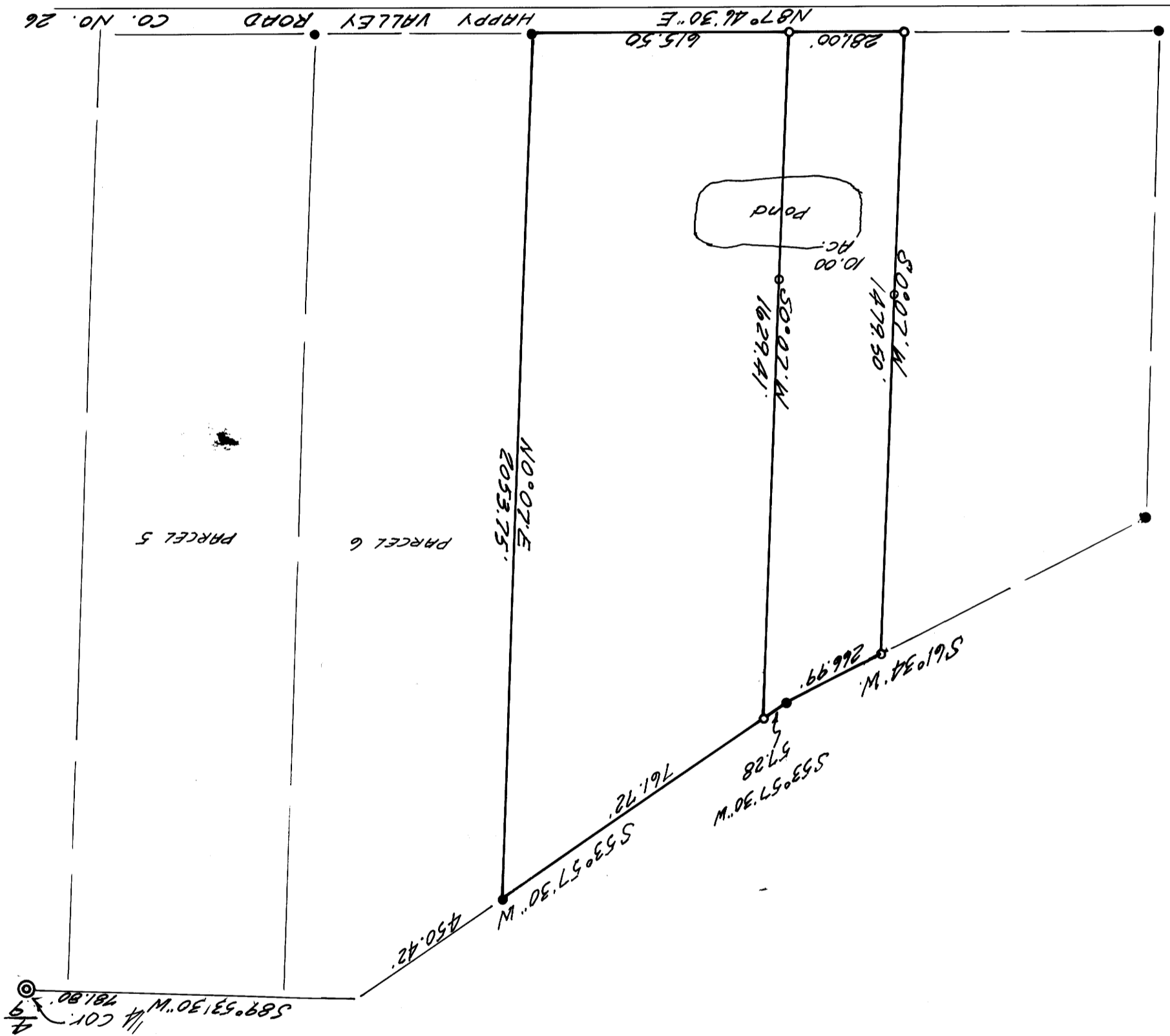
SURVEYED FOR - R.M. KORFF

SURVEYED BY - W.S. BARNES ENGR'G SERV.

MAY 1972

COUNTY SURVEYOR  
DOUGLAS COUNTY, ORE.

MAY 9 1972



- Monuments found
- 3/4" iron rods set.

Base bearing taken from south line of Co. Rd. No. 26.

Reference - C.S. M33-60

