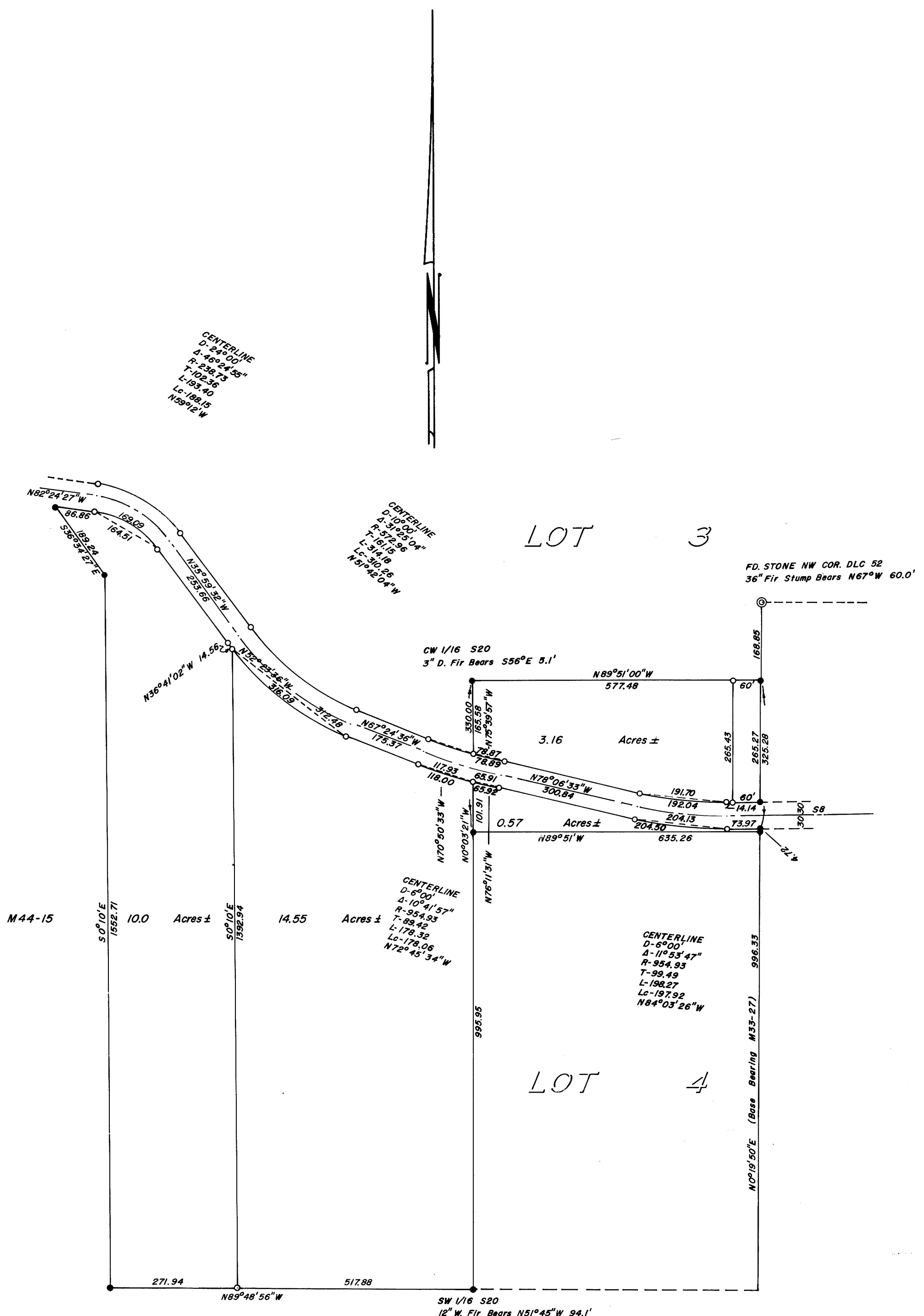


SURVEY IN SECTION 20, TOWNSHIP 27 SOUTH, RANGE 7 WEST, WILLAMETTE MERIDIAN
Surveyed for Hayward Reed by Don E. Garrett
April 1972

Scale 1" = 200'

- - SET 5/8" I. ROD
- - FOUND 5/8" I. ROD

[Signature]
 DON E. GARRETT
 REGISTERED PROFESSIONAL LAND SURVEYOR
 OREGON
 JULY 12, 1961
 DON E. GARRETT
 544



REGISTERED PROFESSIONAL LAND SURVEYOR
Don E. Garrett
 OREGON
 JULY 12, 1961
 DON E. GARRETT
 544