

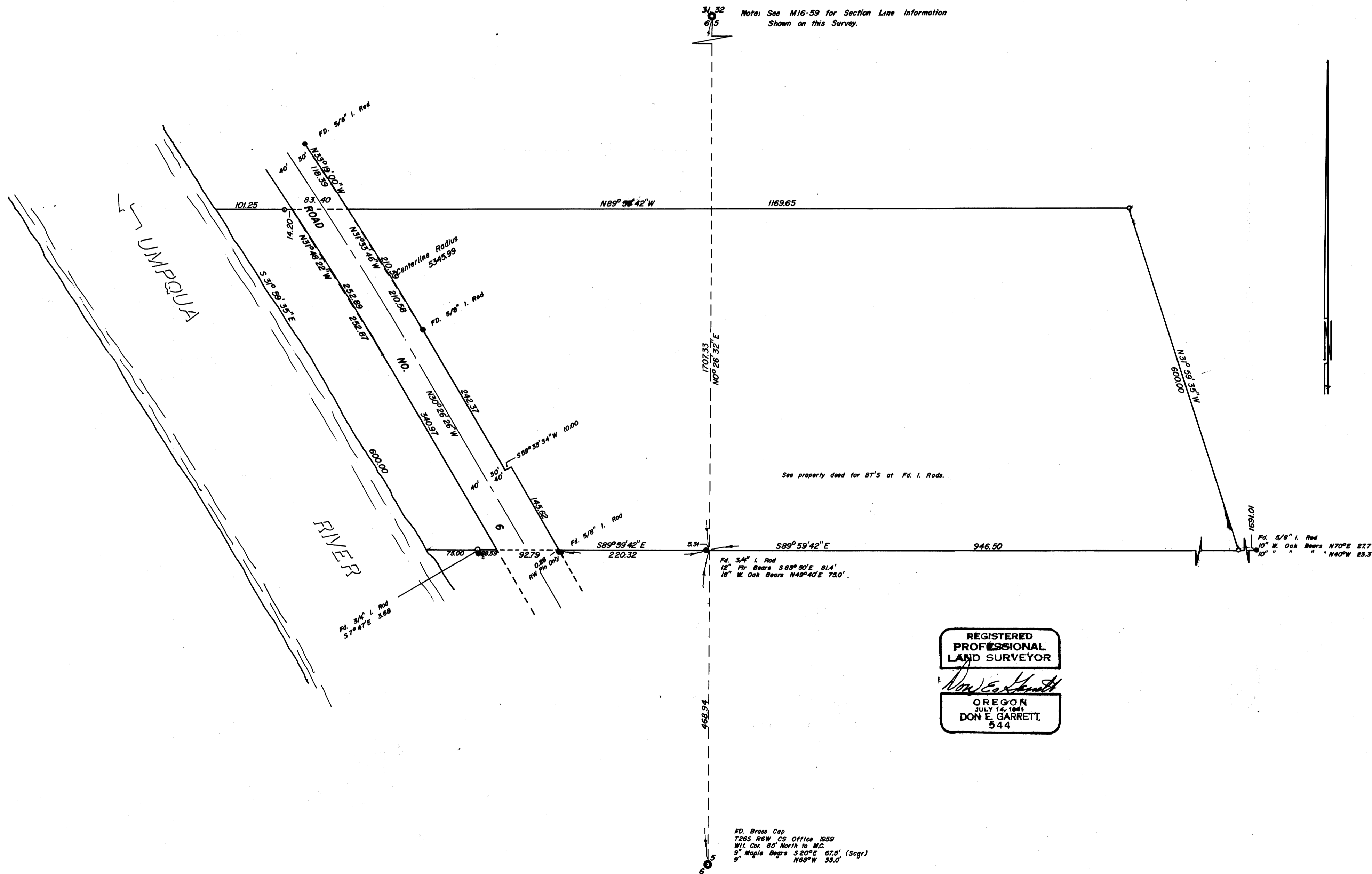
SURVEY IN SECTIONS 5 & 6, TOWNSHIP 26 SOUTH, RANGE 6 WEST, WILLAMETTE MERIDIAN
 Surveyed for Commercial Title Co. by Don E. Garrett
 May 1972

Bearings are based on a Solar Observation taken April 20, 1972.
 o-Set 5/8" I. Rod

COUNTY SURVEYORS FILE DATA
DO NOT REMOVE FROM OFFICE

Scale 1" = 100'

FILED
 RECEIVED
 MAY 2 1972
 COUNTY SURVEYOR
 DOUGLAS COUNTY, OREG.



MAP FILE M 44-73