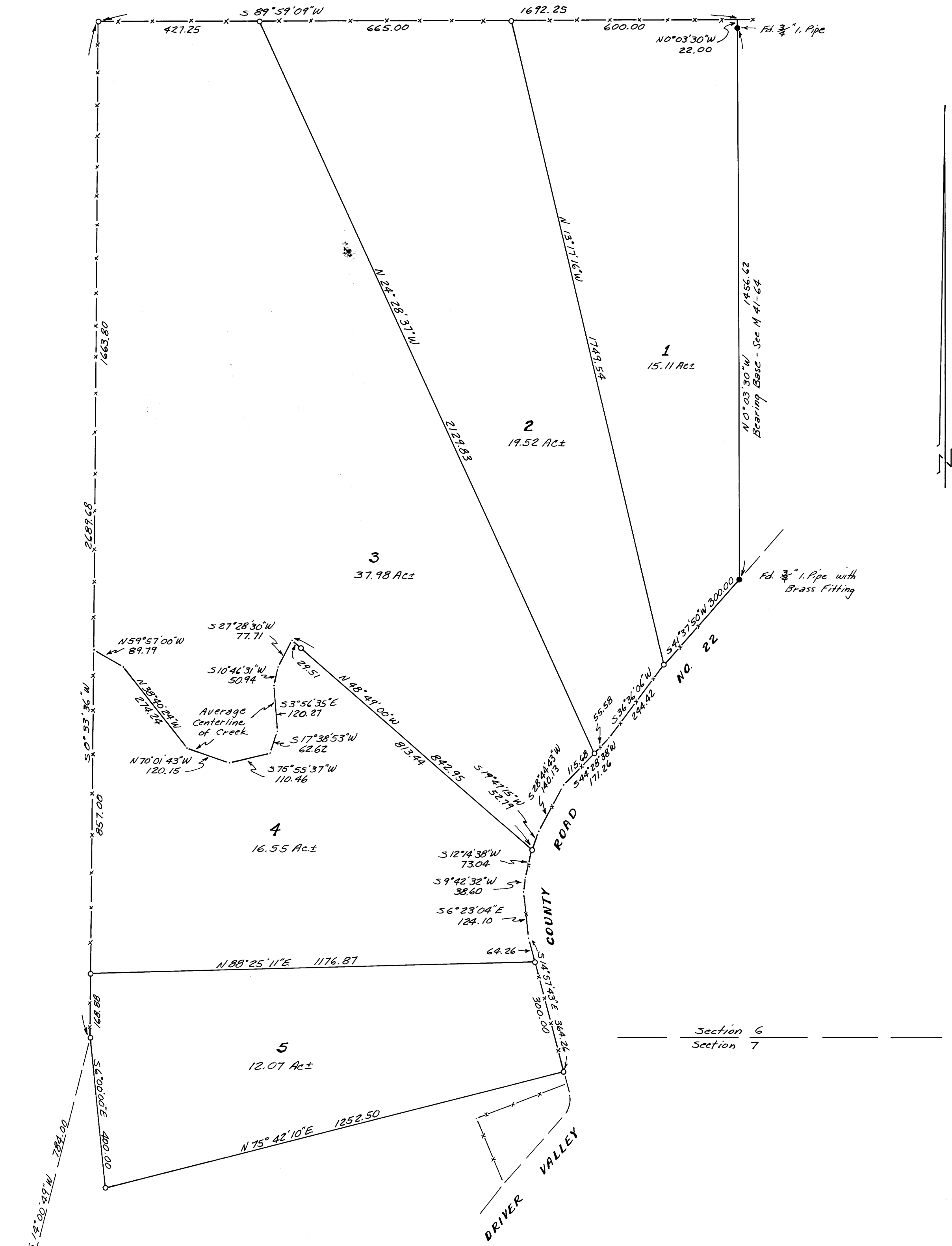


COUNTY SURVEYORS FILE DATA
DO NOT REMOVE FROM OFFICE

FILED
 RECEIVED

DEC 6 1971

COUNTY SURVEYOR
 DOUGLAS COUNTY, ORE.



N. NW Cor. D.L.C. No. 37
 Fd. 3"x8" Stone in N-S fence
 O.B.T. 29" W Oak Snag with
 Rotted Face, Bears S71°E 73.6 to face

S.E. Cor. D.L.C. No. 46
 Fd. Brass Cap

SURVEY IN S.E. 1/4 SEC. 6 & N.E. 1/4 SEC. 7, T25S, R4W, W.M.
 SURVEYED FOR MERRILL BULLOCK BY VICTOR M. MELIND
 DECEMBER 1971

SCALE: 1"=200'

o ~ Indicates Set 1/8" Rod

Victor M. Melind