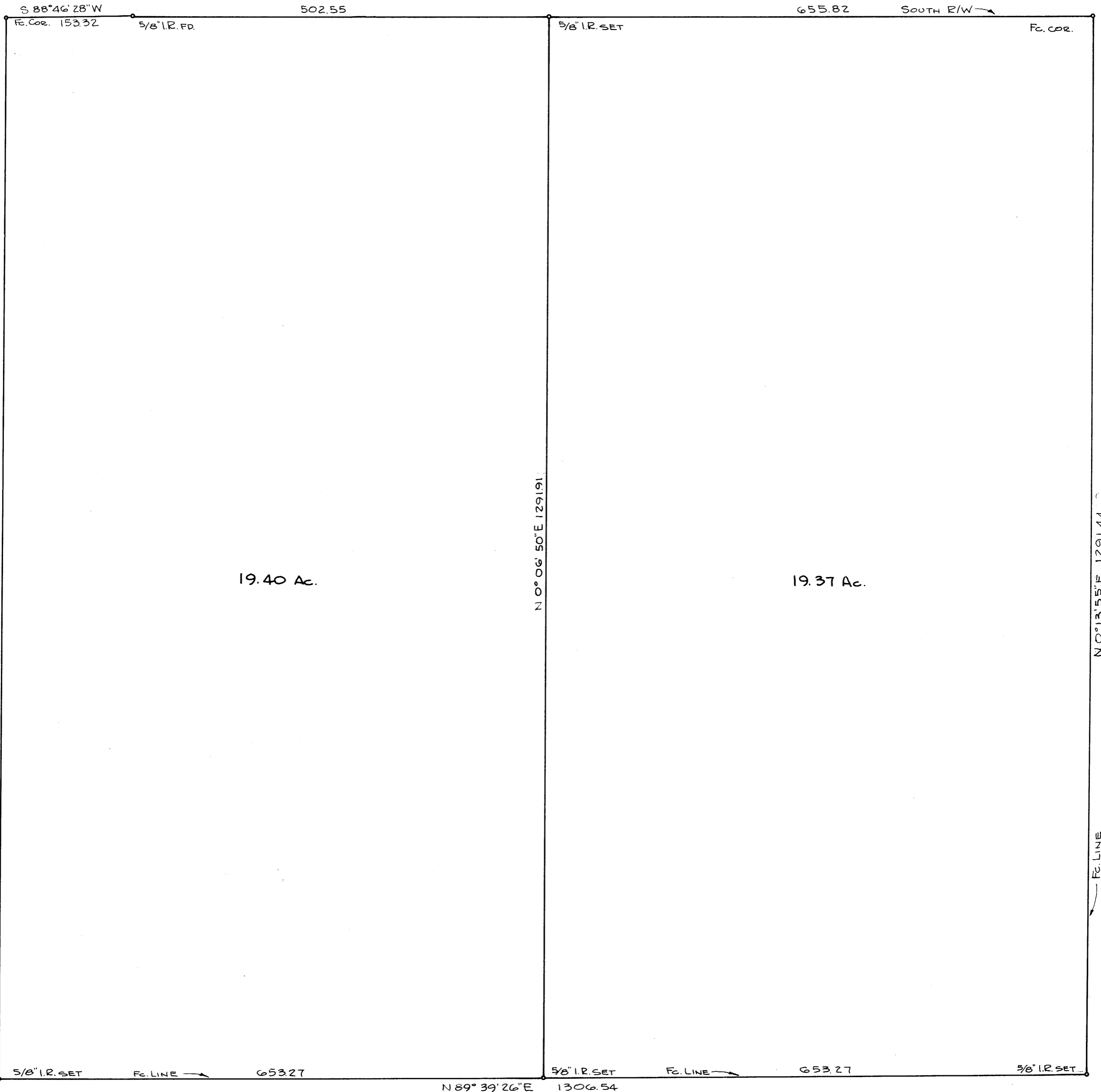


LOOKINGGLASS - FLORANOY ROAD S 89° 42' 03" W BASE BEARING



19.40 Ac.

19.37 Ac.

FILED
RECEIVED

APR 1 1972

COUNTY SURVEYOR
DOUGLAS COUNTY, ORE.

**SURVEY IN SECTION 35, T. 27 S., R. 7 W., W.M.
SURVEYED FOR L. A. NELSON
SURVEYED BY R. H. GEE - APRIL, 1972**

SCALE 1" = 100'



**COUNTY SURVEYORS FILE DATA
DO NOT REMOVE FROM OFFICE**

34 35 T. 27 S., R. 7 W., W.M.
G.L.O. BRASS CAP 1924