

FILED  
RECEIVED

APR 6 1972

COUNTY SURVEYOR  
DOUGLAS COUNTY, OREGON

# SURVEY FOR THE UNITED STATES OF AMERICA

## SECTION 12, TOWNSHIP 32 SOUTH, RANGE 3 WEST, WILLAMETTE MERIDIAN

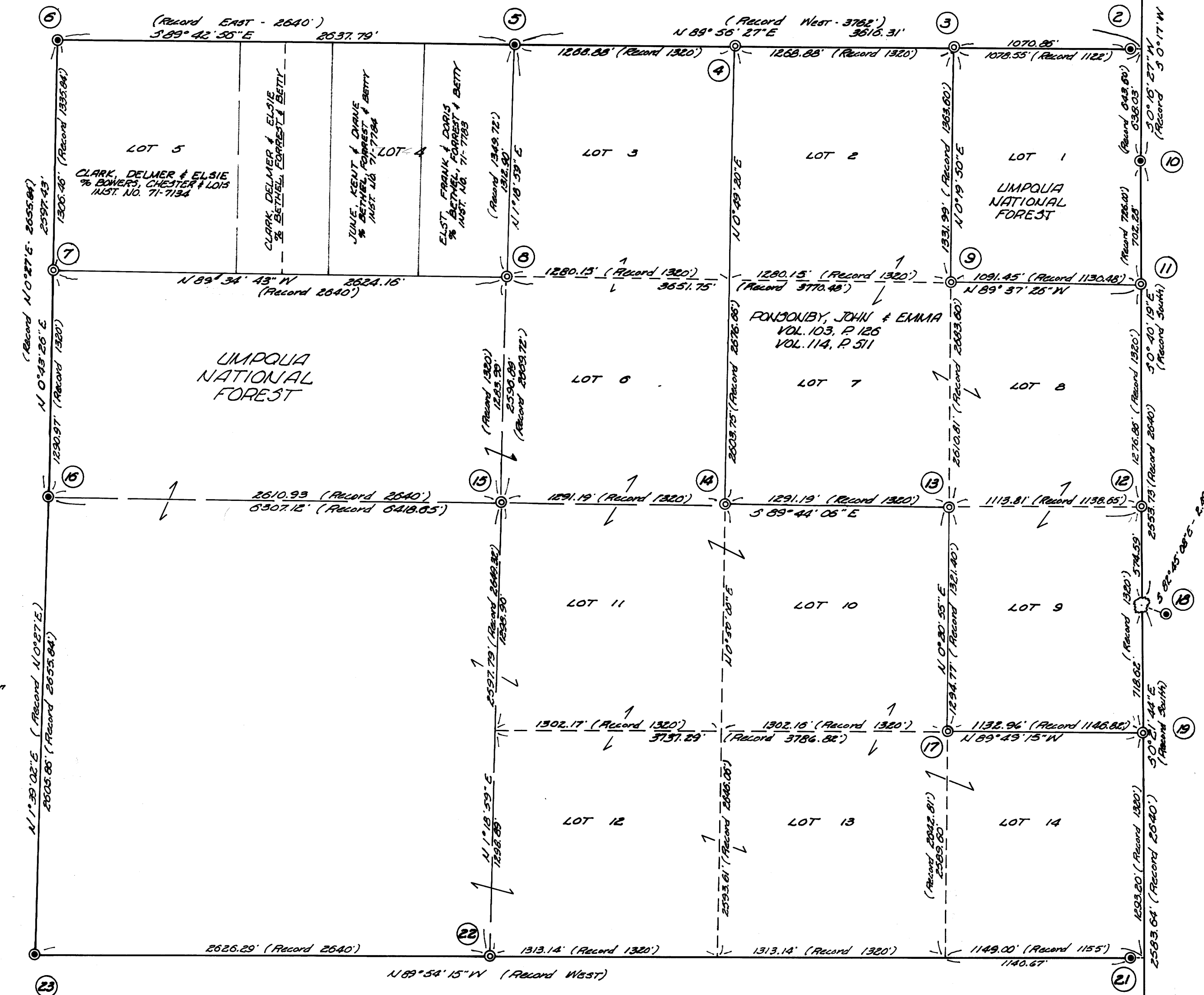
MARCH 24, 1972

TILLER LAND SURVEY No. 7 - CONTRACT No. 003396N  
FIELD BOOKS REFERENCED UNDER CONTRACT No. 003396N - Books 1, 2, 3, & 4

SCALE: 1" = 500'

COUNTY SURVEYORS FILE DATA  
DO NOT REMOVE FROM OFFICE

Monuments set consist of a 2"x30" galvanized iron pipe, flared at the bottom, with a 3" brass cap riveted to the top.



Bearings are based on a Solar Observation taken February 21, 1972. Mean Declination = 20°30'

REGISTERED  
PROFESSIONAL  
LAND SURVEYOR

OREGON  
DON E. GARRETT  
544

I, Don E. Garrett, a registered land surveyor in the State of Oregon, hereby certify that this plat and the notes hereon, or attached, are a correct representation of a survey I performed during February-March, 1972, for the U.S. Forest Service, in accordance with the statutes of the State of Oregon and with the Articles of my contract.

1. Set iron stone - 1 1/4" clearly marked on West face. Old B.T. N15°W-91'1Ks. fallen down with rotten stump standing. Some traces of scribbing still visible. Two large D. Firs stand in position of old S.E. CT. Did not open. 4" D. Fir - 31°54'E-191.0'. 35" D. Fir - 33°25'E-195.2'. Stamped: T325 R3W. Set Brass Cap w/ stone alongside. 17" Fir - 319°E-259'. Scribbled: R3W. 8" Fir - N27°E-130.0'. Scribbled: 1/4 36 BT. 1972. RLS 544.
2. Set Brass Cap stamped CC 72 6. T325, R3W. 1968-OL3 538. This Brass Cap lies S89°56'27"W, 7.69 Ft. from its true intersection. Found Bearing Trees: 18" Fir bears N3°W-5.8'. 18" Fir bears S84°W-14.8'. (Bears & scribbing visible).
3. Set Brass Cap by proportionate measurement. T325, R3W. Stamped: 31 80. 1/4 312. R.R.L.S. 544. Established Bearing Trees: 11" Fir bears S18°W-24.5'. Scribbled: 1/4 80 S12 BT. 11" Fir bears N19°E-12.5'. Scribbled: 1/4 80 S1 BT.
4. Set Brass Cap by proportionate measurement. T325, R3W. Stamped: 31 80. 1/4 312. R.R.L.S. 544. Established Bearing Trees: 5" Pine bears N83°W-62'. Scribbled: 1/4 31 BT. 10" Pine bears S40°W-4.8'. Scribbled: 1/4 312 BT.
5. Set Brass Cap marked: T325, R3W. 1/4 51-512. 1959. Found Bearing Trees: 19" D. Fir bears N85°E-42.2'. (Shows Scar). 17" D. Fir bears S54°E-93.5'. (Shows Scar).
6. Set Brass Cap marked: T325, R3W. 1959. 511 512. T325, R3W. Found Bearing Trees: 15" D. Fir bears S2°W-91.1'. 18" Fir bears N86°W-203.9'. 12" W. Fir bears S20°E-263.8'. (New stump).
7. Set Brass Cap by proportionate measurement. T325, R3W. Stamped: 511 512. 1972. RLS 544. Established Bearing Trees: 10" Fir bears N48°E-23.5'. Scribbled: 1/4 512 BT. 10" Hemlock bears West-91'. Scribbled: N1/4 511 BT.
8. Set Brass Cap by proportionate measurement. T325, R3W. Stamped: N1/4 512. 1972. RLS 544. Established Bearing Trees: 7" Hemlock - N74°W-34.5'. 7" Hemlock - N84°E-51.4'. Both Scribbled: "C" 1/4 512 BT.
9. Set Brass Cap by proportionate measurement. T325, R3W. Stamped: N1/4 512. 1972. RLS 544. Established Bearing Trees: 15" D. Fir bears N4°E-90.4'. 17" D. Fir bears N7°W-88.4'. Both Scribbled: "N" 1/4 80 S12 BT.
10. Found Brass Cap: Section 7 only. T325, R3W. 31" D. Fir bears N61°E-18.5'. No Scrib. showing. 25" D. Fir bears S85°E-28.5'. No Scrib. showing.
11. Set Brass Cap by proportionate measurement. T325, R3W. Stamped: 1972. RLS 544. Established Bearing Trees: 15" D. Fir bears N41°W-18.9'. 13" D. Fir bears S34°W-40.4'. 9" Fir bears N33°W-22.5'. Both Scribbled: "N" 1/4 512 BT.
12. Set Brass Cap by proportionate measurement. T325, R3W. Stamped: 1972. RLS 544. Established Bearing Trees: 15" D. Fir bears S20°E-237'. 15" D. Fir bears S60°E-237'. "Overgrown Face". 13" D. Fir bears N70°W-11.8'. Scribbled: 1/4 512.
13. Set Brass Cap by proportionate measurement. T325, R3W. Stamped: C 1/4 512. 1972. RLS 544. Established Bearing Trees: 22" Fir bears S8°W-537'. 15" Fir bears S40°E-21.4'. Both Scribbled: "C" 1/4 512 BT.
14. Set Brass Cap by proportionate measurement. T325, R3W. Stamped: C 1/4 512. 1972. RLS 544. Established Bearing Trees: 15" D. Fir bears S43°W-41.7'. 15" Fir bears N30°E-11.1'. Both Scribbled: "C" 1/4 512 BT.
15. Set Brass Cap by proportionate measurement. T325, R3W. Stamped: 1/4 512. 1972. RLS 544. Established Bearing Trees: 15" D. Fir bears N4°E-90.4'. 17" D. Fir bears N7°W-88.4'. Both Scribbled: "N" 1/4 80 S12 BT.
16. Found Brass Cap marked: County Surveyors Office - 1/4 511-512. T325, R3W. 1959. Found Bearing Trees: 35" D. Fir bears S84°W-15.2'. Face chopped out. 40" D. Fir bears East-13.2'. Chopping on bark.
17. Set Brass Cap by proportionate measurement. T325, R3W. Stamped: 5 1/16 80. 1972. RLS 544. Established Bearing Trees: 10" Fir bears N40°W-25.6'. 8" Fir bears S00°E-21.2'. Both Scribbled: "S" 1/16 80 S12 BT.
18. Found 15" D. Fir (Orig. 10") - 1/4 Cor. 57. Scribbled 57 on East Face. This is the 1/4 Cor. of 37 only. Found Bearing Trees: 15" D. Fir bears S60°E-237'. "Overgrown Face". 13" D. Fir bears N70°W-11.8'. Scribbled: 1/4 512.
19. Set Brass Cap by proportionate measurement. T325, R3W. Stamped: 31/8 312. 1972. RLS 544. Established Bearing Trees: 8" Hemlock bears N70°W-12.4'. 15" Fir bears S53°W-33.2'. Both Scribbled: "3 1/8 512".
20. Set Brass Cap by proportionate measurement. T325, R3W. Stamped: 31/8 312. 1972. RLS 544. Established Bearing Trees: 17" Fir bears S26°E-21.8'. Scribbled: "57 BT". 24" Fir bears S40°E-20.6'. Scribbled: "518 BT".
21. Found Brass Cap stamped: CC 518 57. T325, R3W. 1968-OL3 538. This Brass Cap lies N89°54'15"W, 6.33 Ft. from its true intersection. Found Bearing Trees: 8" Hemlock bears N57°W-63.5'. Shows Scrib. 48" Fir bears S23°W-60.6'. Shows Scrib.
22. Set Brass Cap by proportionate measurement. T325, R3W. Stamped: 1/4 512. 1972. RLS 544. Established Bearing Trees: 25" D. Fir bears N12°E-41.9'. Scribbled: 1/4 512 BT. 19" D. Fir bears S52°E-W-27.8'. Scribbled: 1/4 513 BT.
23. Set Brass Cap stamped: 511, 512, 513. T325, R3W. County Surveyors Office, 1962. Stone with notches alongside Brass Cap. Found Bearing Trees: 18" Laurel bears S78°E-24.6'. 20" Laurel bears S25°W-43.3'. 16" D. Fir bears N12°W-23.0'. 12" D. Fir bears N17°E-38.5'. All trees show scribbing.