

SURVEY IN LOT 22, BL. 2, PLAT "C", S. L. & W. CO.
 IN NW 1/4 SECTION 29, T25S, R5W, W.M.

Surveyed for Schneider Machine Co. by Victor M. McLind
 March, 1972

Scale: 1" = 100'

Bearings based on the W. line of Lot 22, Bl. 2, Plat "C",
 S.L. & W. Co. (E. line of Railroad Right of Way)

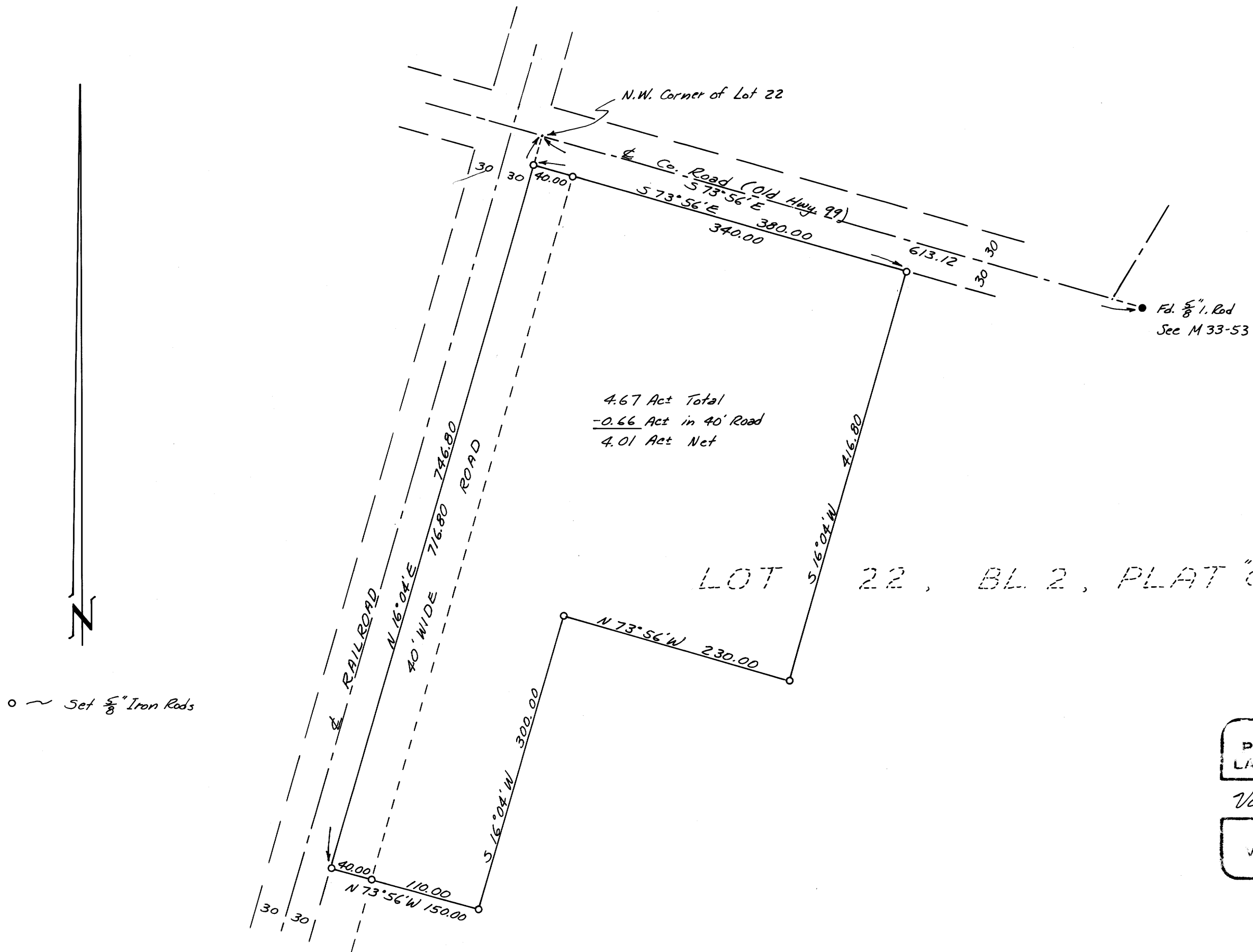
COUNTY SURVEYORS FILE DATA
 DO NOT REMOVE FROM OFFICE

FILED *LM*
 RECEIVED

MAR 29 1972

COUNTY SURVEYOR
 DOUGLAS COUNTY, ORE.

MAP FILE M 44-60



REGISTERED
 PROFESSIONAL
 LAND SURVEYOR

Victor M. McLind

OREGON
 SURVEYOR
 VICTOR M. MCLIND
 934

MAP FILE M 44-60