

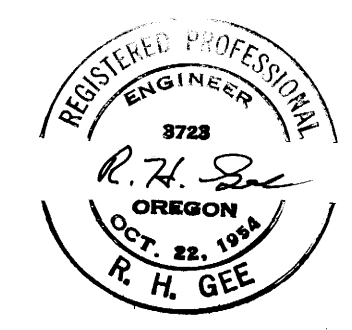
COUNTY SURVEYORS FILE DATA
DO NOT REMOVE FROM OFFICE

FILED
RECEIVED

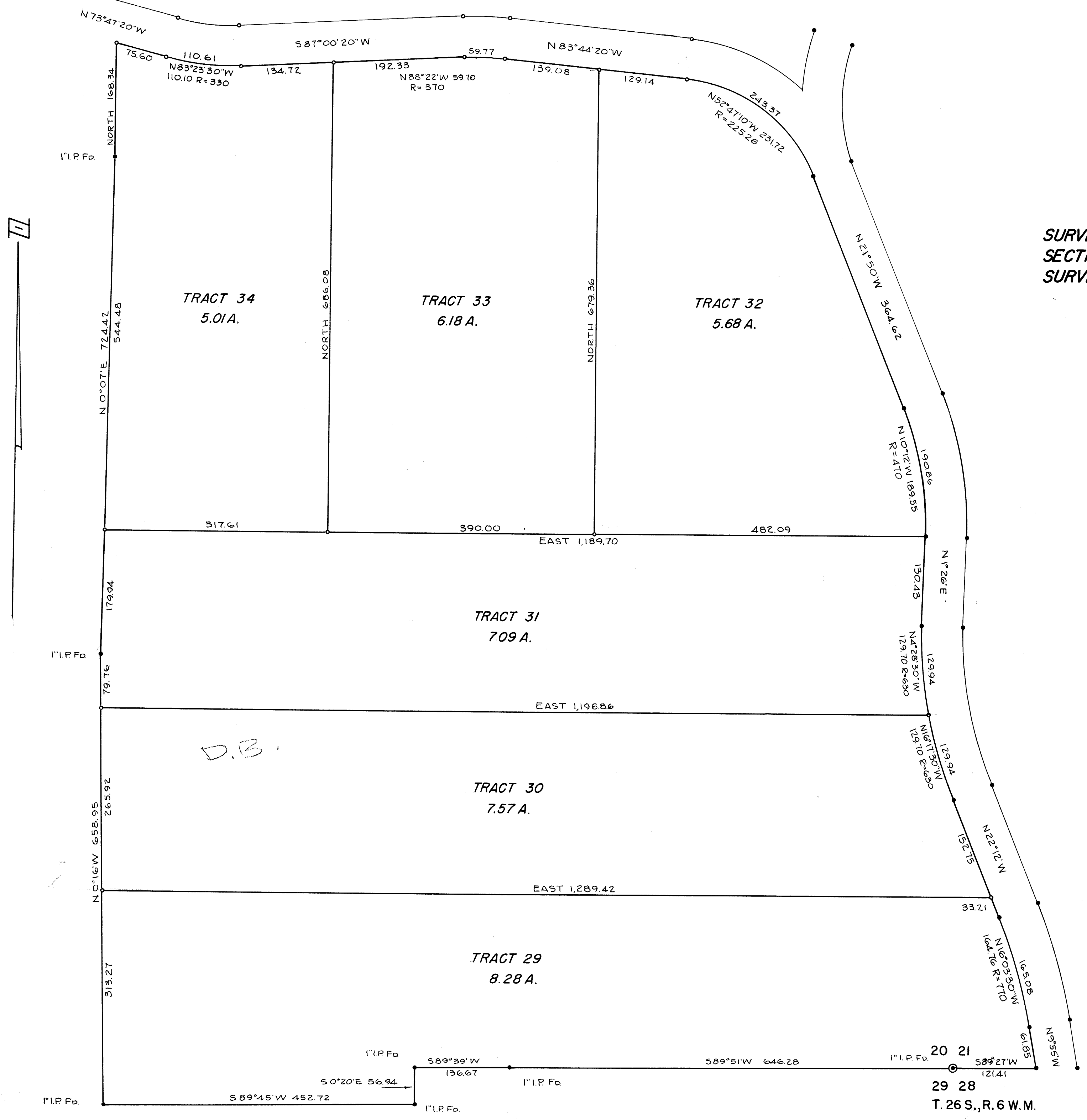
MAR 23 1972

COUNTY SURVEYOR
DOUGLAS COUNTY, ORE

SURVEY FOR GARDEN VALLEY WEST, OREGON LTD.
SECTIONS 20 AND 21, T. 26 S., R. 6 W., W.M.
SURVEYED BY R.H.GEE - OCTOBER, 1971
SCALE 1" = 100'



• DENOTES 5/8" I.R. Fd.
○ DENOTES 5/8" I.R. SET
BEARINGS BASED ON C.S. FILE RM 1-68



MAP FILE M.44-57

MAP FILE M.44-57