

COUNTY SURVEYORS FILE
DO NOT REMOVE FROM OFFICE

SURVEY IN LOT 5, EDEN ORCHARDS
N.E. 1/4 SEC. 2, T 27S, R 7W, W.M.

Surveyed for James Butcher by Victor M. McLind
March 1972

Scale: 1" = 100'

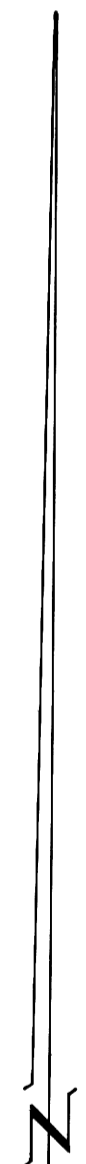
o ~ Indicates Set 5/8" Iron Rod

RECEIVED

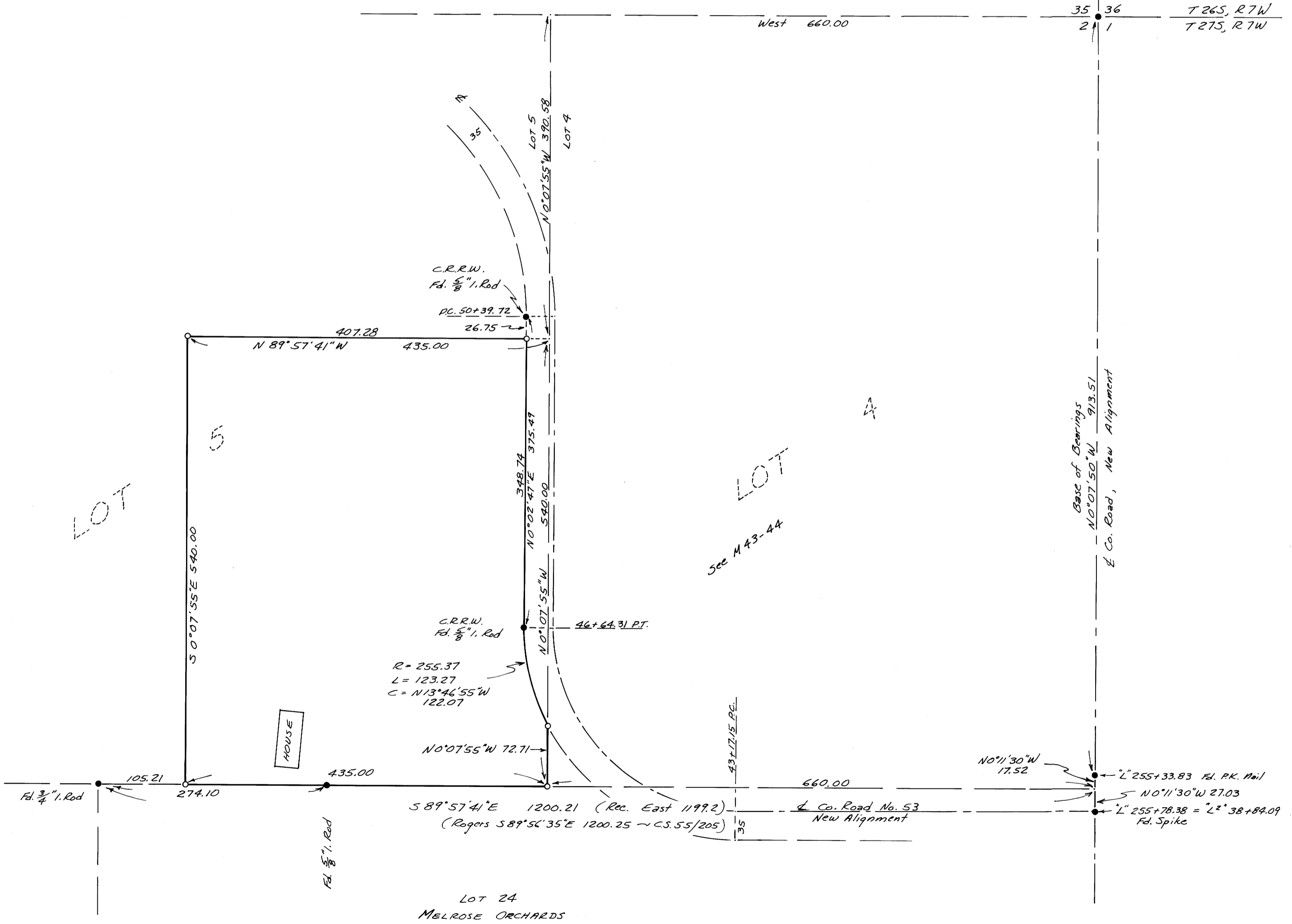
347 161072

COUNTY SURVEYORS
DEKALB COUNTY, GA.

Section Corner, $\frac{5}{8}$ " Iron Rod in pavement
A Brass Cap Witness Corner bears East 45.00'



REGISTERED PROFESSIONAL SURVEYOR
Victor M. McLind
DEKALB COUNTY, GA.



M 44-56