

COUNTY SURVEYORS FILE THIS
DO NOT REMOVE FROM OFFICE

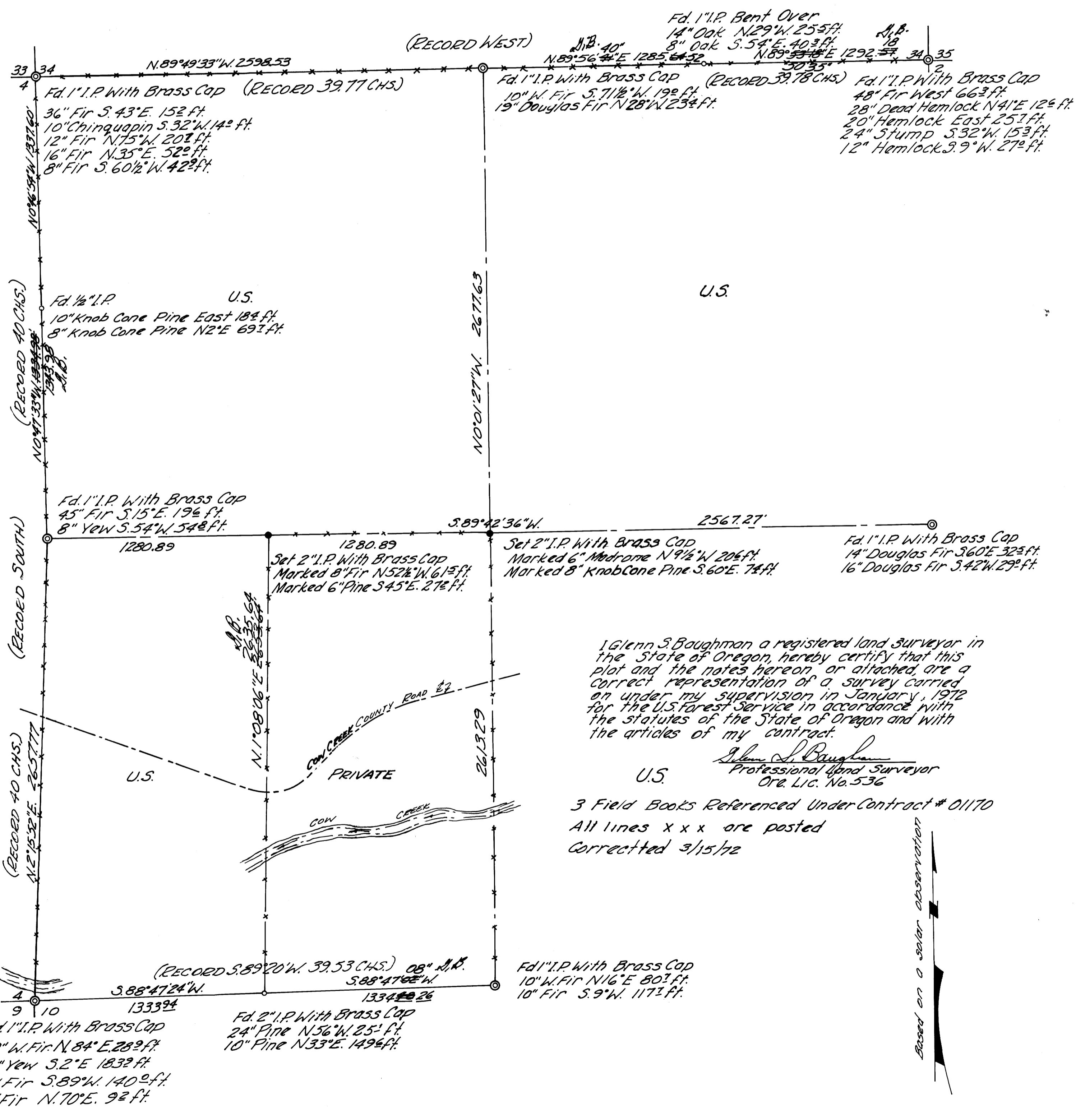
SURVEY TO ESTABLISH PROPERTY CORNERS

SECTION 3, T.32S., R.3W.W.M.

SURVEYED FOR UMPQUA NATIONAL FOREST, TILLER DISTRICT
SURVEYED BY BAUGHMAN SURVEYING SERVICE
SCALE 1"=400'
CONTRACT NO. 01170

Glenn S. Baughman

MAR 7 1972
COUNTY SURVEYORS
DAILY CLERK, 1972



I Glenn S. Baughman a registered land surveyor in the State of Oregon, hereby certify that this plat and the notes hereon or attached, are a correct representation of a survey carried on under my supervision in January, 1972 for the U.S. Forest Service in accordance with the statutes of the State of Oregon and with the articles of my contract.

Glenn S. Baughman
Professional Land Surveyor
Ore. Lic. No. 536

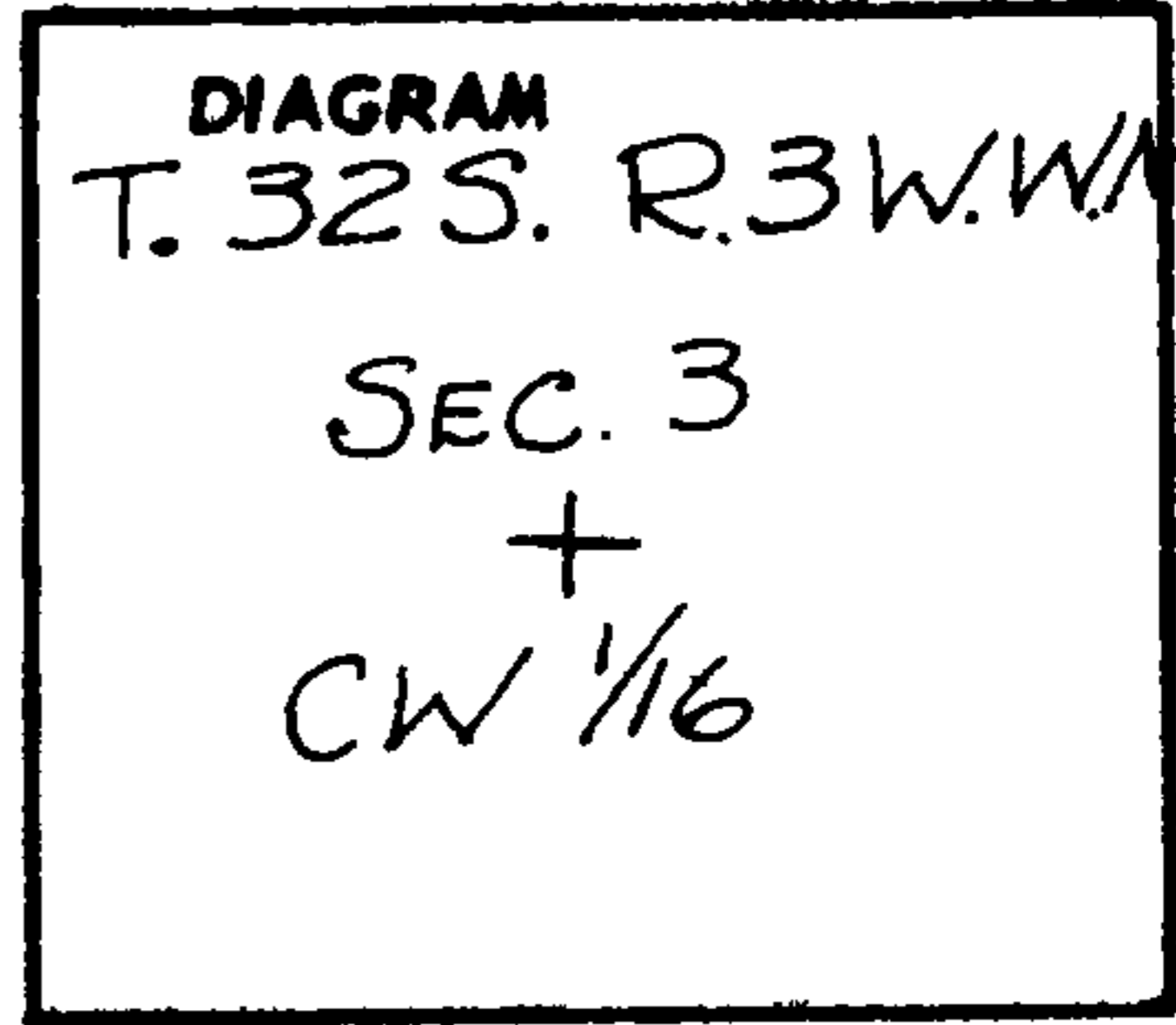
3 Field Books Referenced Under Contract # 01170
All lines x x x are posted
Corrected 3/15/72

Based on a solar observation

CERTIFIED RECORD OF LAND CORNER MONUMENTATION

History of original corner establishment:

NONE



FILED *[Signature]*
RECEIVED

MAR 7 1972

COUNTY SURVEYOR
DOUGLAS COUNTY, ORE.

Description of corner evidence found:

NONE

Description of monument and accessories I established to perpetuate the original location of this corner

I set a 2" x 20" Galvanized Iron Pipe with brass cap 20" in the ground.

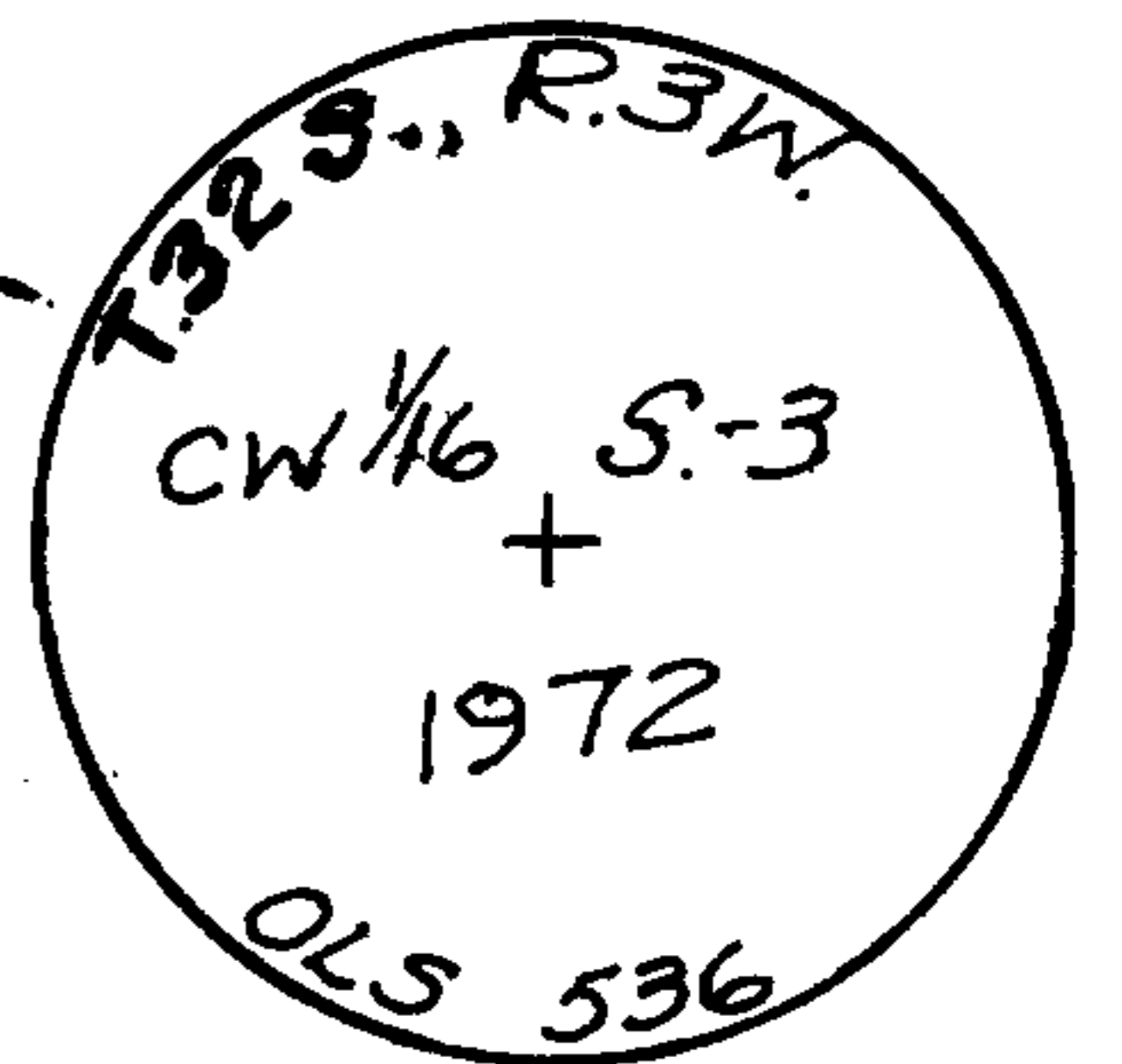
From the Pipe Monument I marked the following Bearing Trees with metal B.T. tags.

- 8" Douglas Fir N. 52° 30' W. 61.5 ft. scribed C.W. 1/16 S. 3 B.T.
- 6" Pine S. 45° E. 27.2 ft. scribed C.W. 1/16 S. 3 B.T.

I marked the cap

REGISTERED
PROFESSIONAL
LAND SURVEYOR

[Signature]
OREGON
JULY 17, 1927
GLENN S. BAUSHMAN
536

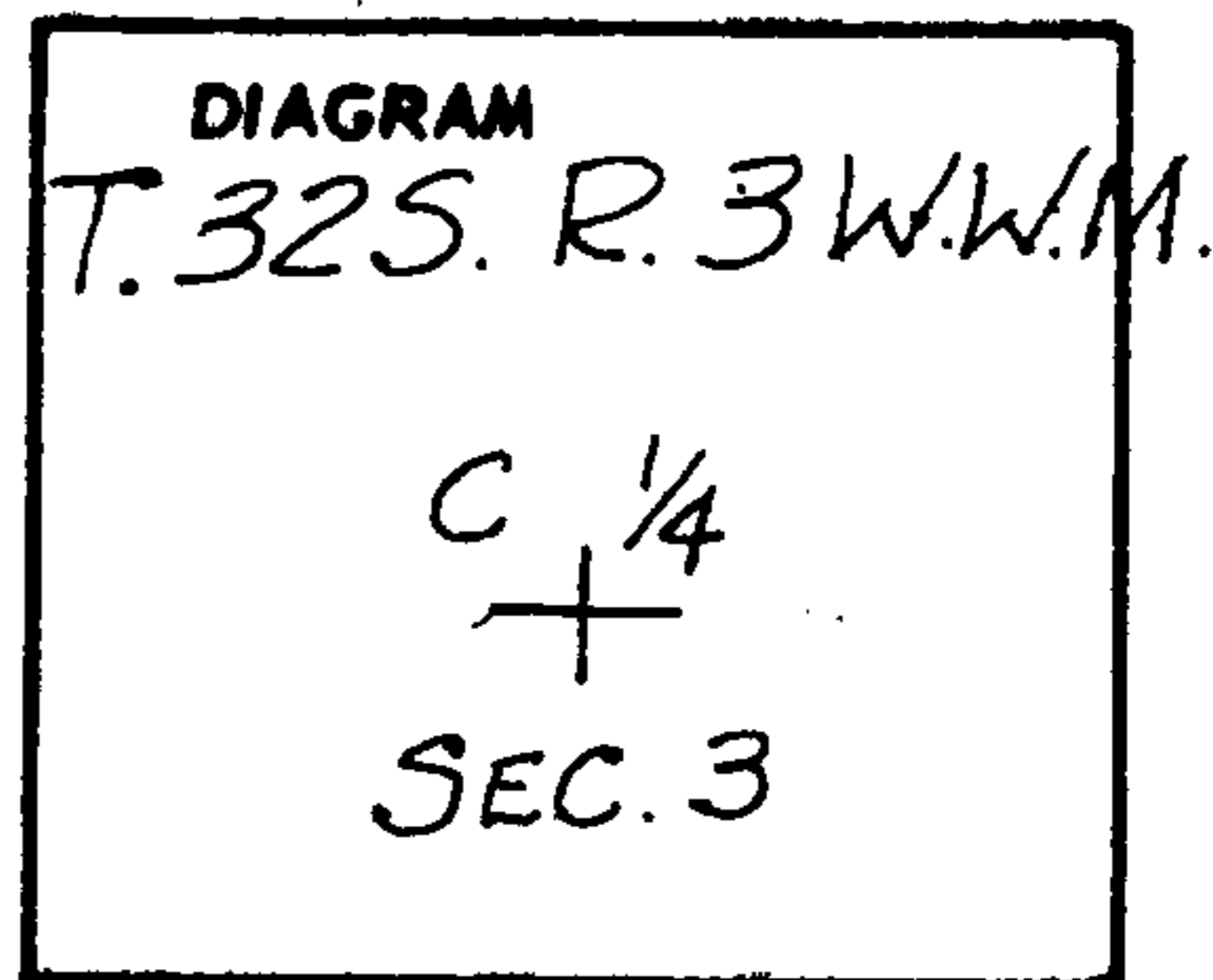


Office of *Surveyor* County of *Douglas*
State of *Oregon*, I hereby certify that the within instrument was filed in this office
for record on the *7* day of *March*, 19*72*, at *3:45* o'clock *P.* m., (signed)
James W. Byron by *Lorraine P. Lewis*
(COUNTY OFFICIAL) (DEPUTY)

CERTIFIED RECORD OF LAND CORNER MONUMENTATION

History of original corner establishment:

NONE



Description of corner evidence found:

NONE

FILED *[Signature]*
RECEIVED

MAR 7 1972

COUNTY SURVEYOR
DOUGLAS COUNTY, ORE.

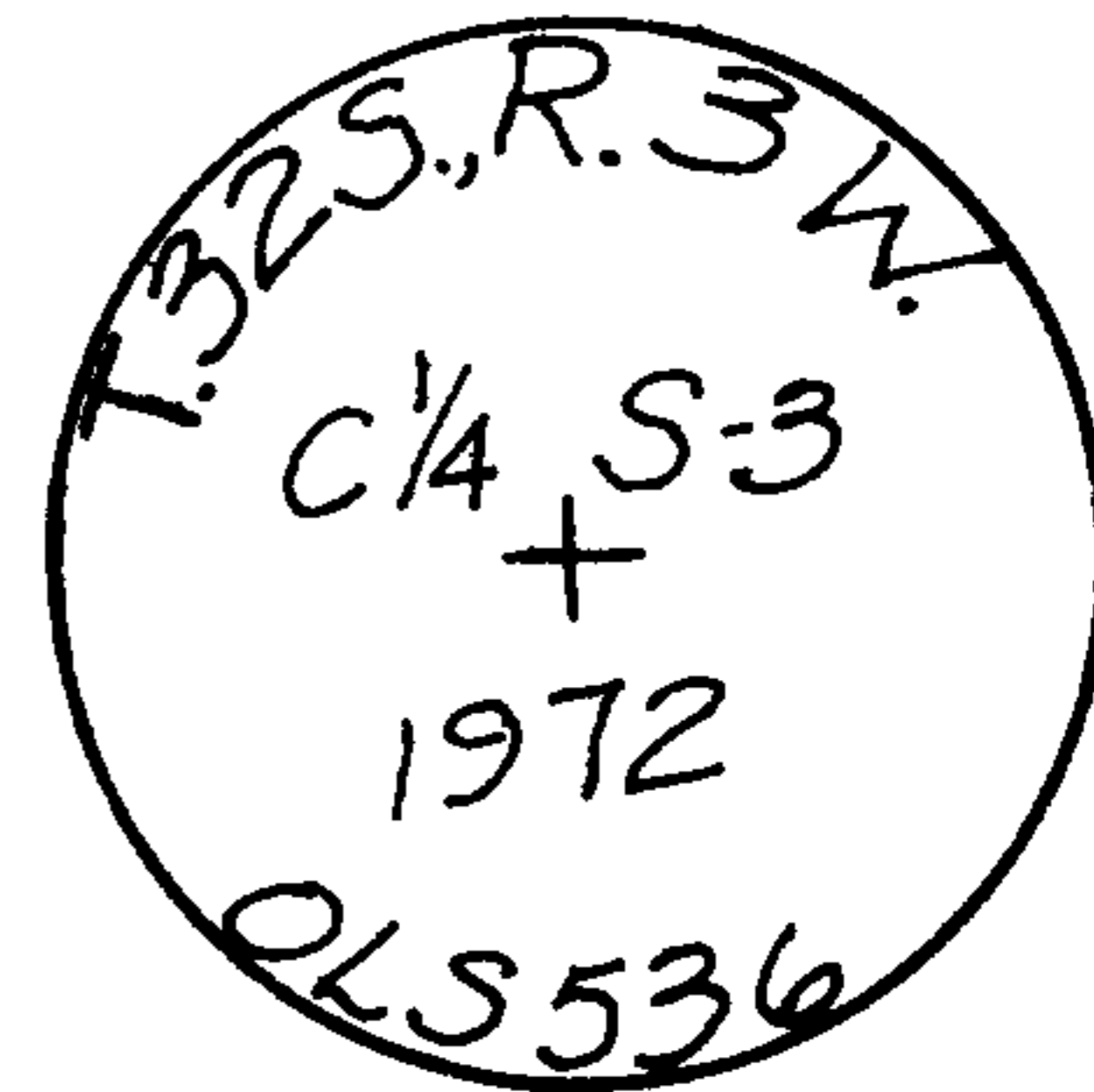
Description of monument and accessories I established to perpetuate the original location of this corner

I set a 2" x 30" Galvanized Iron Pipe with brass cap 21" in the ground.

From the Pipe Monument I marked the following bearing trees:
with metal B.T. Tags.

- 6" Madrona N. 9 1/2 W. 20.6 "
- 8" Knob Cone Pine S. 60° E. 74.4 ft.

I marked the cap



Office of Surveyor County of Douglas
 State of Oregon, I hereby certify that the within instrument was filed in this office
 for record on the 7 day of March, 1972, at 3:45 o'clock p.m. (signed)
James W. Byron by Lorraine T. Lewis
 (COUNTY OFFICER) (DEPUTY)