

COUNTY SURVEYORS FILE DAY  
DO NOT REMOVE FROM OFFICE

# SURVEY TO ESTABLISH PROPERTY CORNERS &

## RE-ESTABLISH N.W. 1/4 & C.W. 1/4 CORNERS LOCATED IN SEC. 16, T.265, R.6 W.W.M.

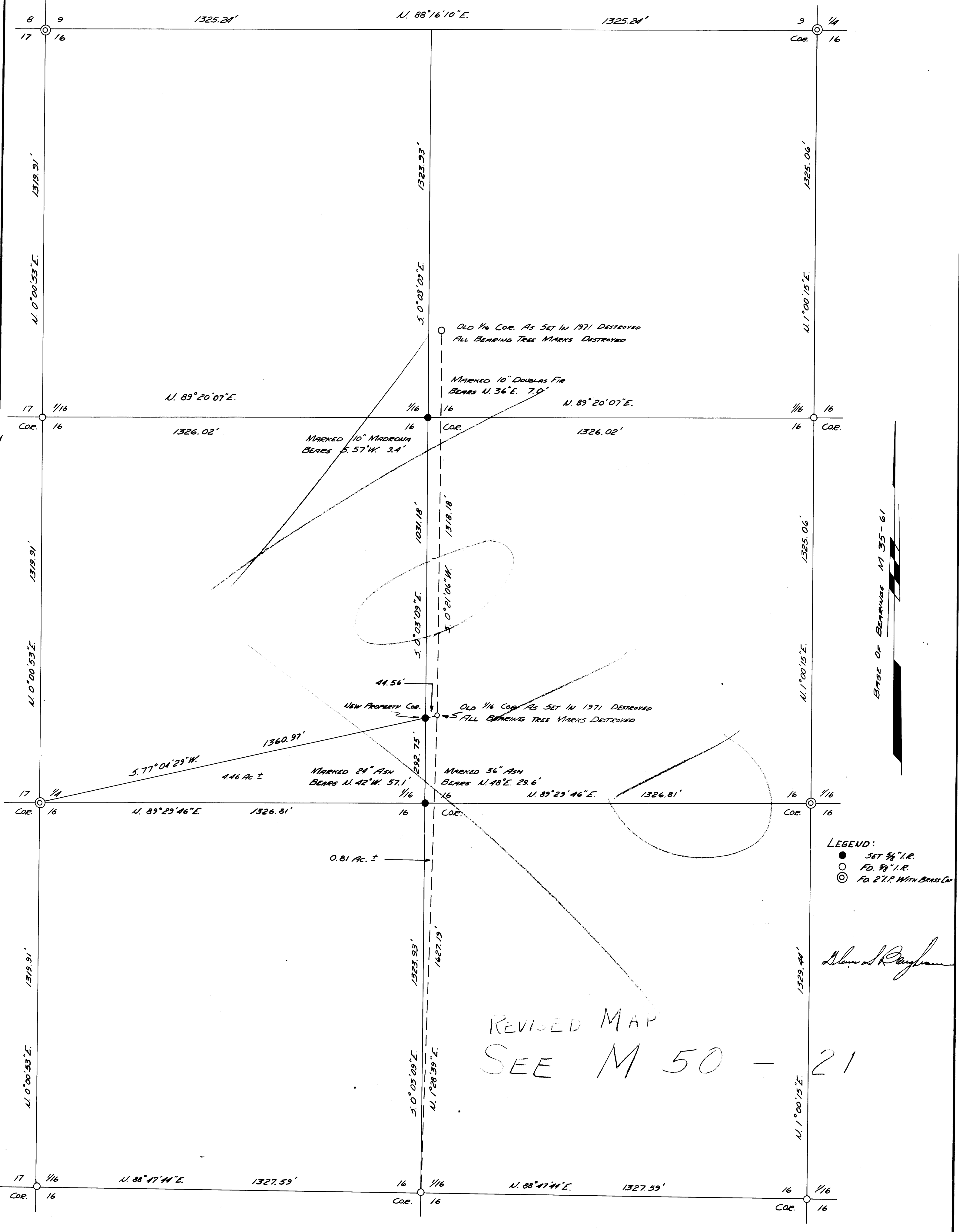
FOR GEORGE KELLER REALTY

JAN. 1972

BY BAUGHMAN SURVEYING SERVICE

SCALE 1"=200'

FILED  
RECORDED  
1972  
COUNTY SURVEYOR  
DORRIS G. GIBSON



LEGEND:  
 ● SET 5/8" I.P.  
 ○ FD. 5/8" I.P.  
 ⊙ FD. 2 1/2" I.P. WITH BEARS GR.

*Alan S. Baughman*

REVISED MAP  
SEE M 50 - 21