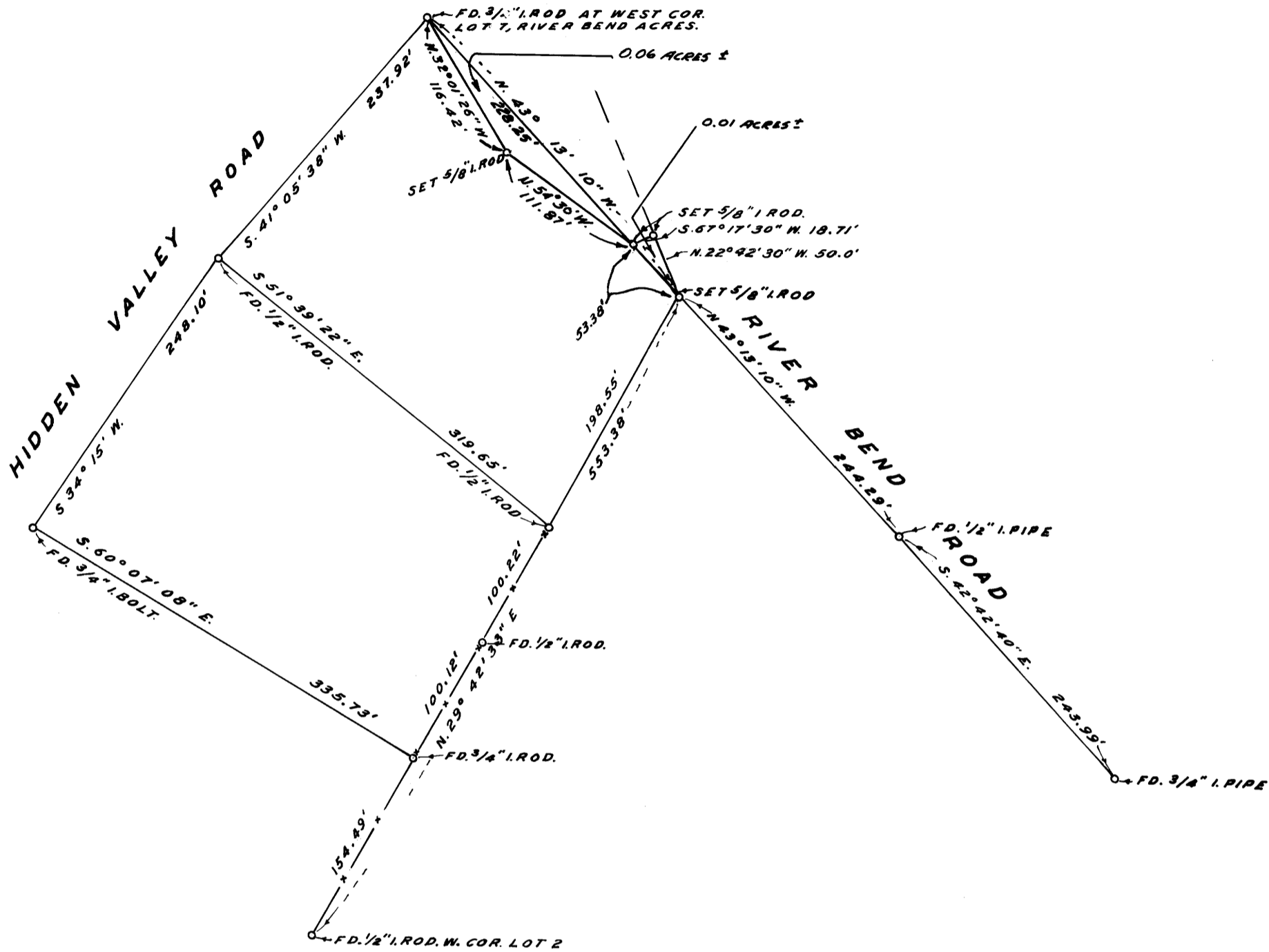


6A - 77W

FILED
2005/02

FEB 25 2005

COUNTY SURVEYOR
DOUGLAS COUNTY, KANSAS



NOTE: BEARINGS BASED ON
S. 34° 15' W., PER DEED REC.

SURVEY TO SET PROPERTY CORNERS
SECTION 23, T.26S., R.6W. W.M.
BY BAUGHMAN SURVEYING SERVICE.
JAN. 1972 SCALE: 1"=100'
SURVEYED FOR T. R. MAFIT

COUNTY SURVEYORS FILE DATA
DO NOT REMOVE FROM OFFICE

Allen S. Baughman

M44-49