

SURVEY FOR DEED DESCRIPTION IN SE. ¼ SEC. 35, T22S, R5W, & NE. ¼ SEC. 2, T23S, R5W, W.M.  
 Surveyed for Richard Brawn by Victor M. McLind  
 February 1972

COUNTY SURVEYORS FILE CASE  
 DO NOT REMOVE FROM OFFICE

Scale: 1" = 200'

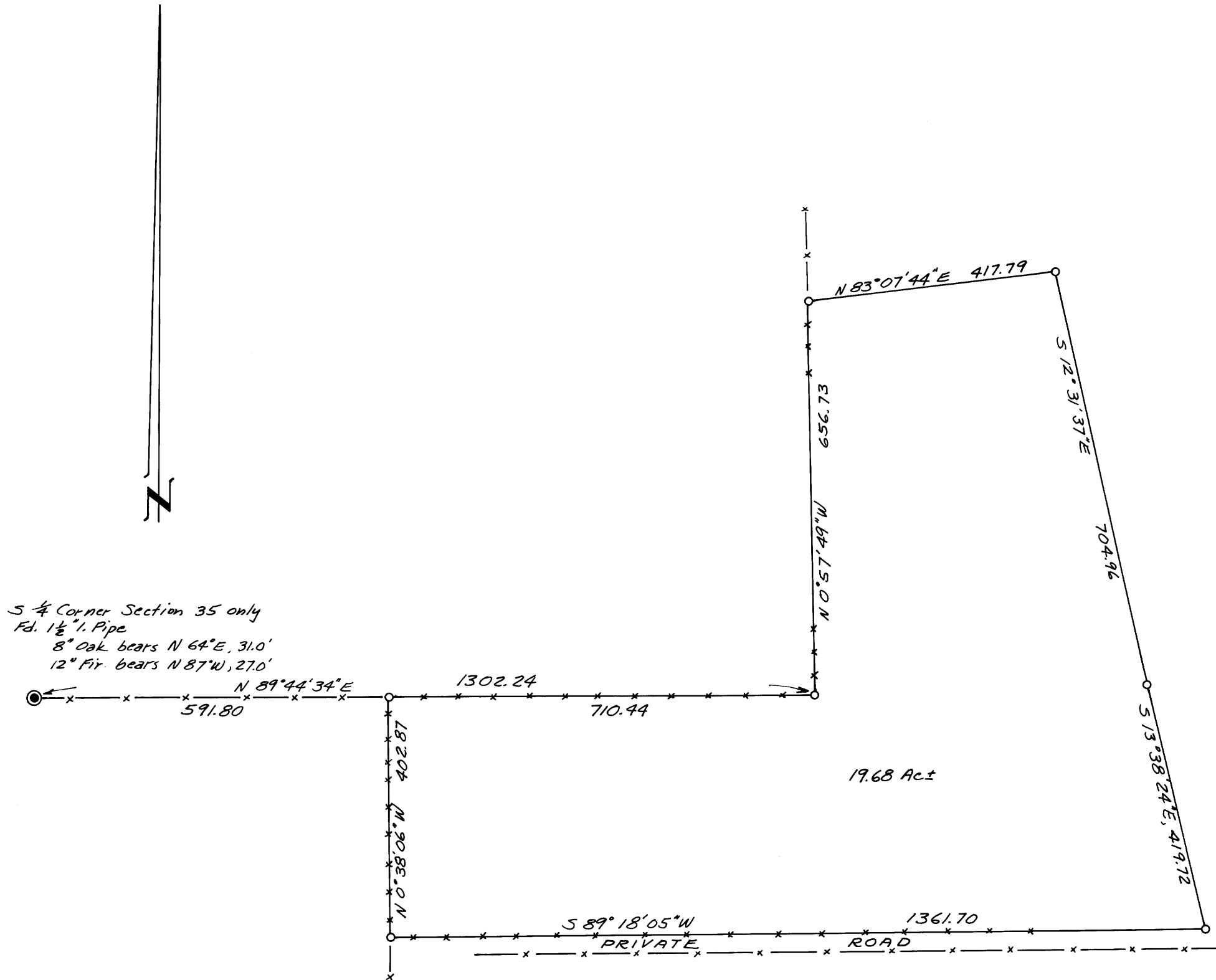
Bearings Based on Solar Observation Feb. 17, 1972

o ~ Indicates Set 5/8" Iron Rod

FILED *LM*  
 RECEIVED

FEB 17 1972

COUNTY SURVEYOR  
 DOUGLAS COUNTY, ORE.



Victor M. McLind

M 44 - 44

44-44 W