

SURVEY FOR DEED DESCRIPTION IN THE N. 1/2 OF SEC. 12, T22S, R6W, W.M.

SURVEYED FOR JOE B. COLE BY VICTOR M. MELIND
 FEBRUARY 1972

Bearings Based on Solar Observation Taken February 10, 1972

o ~ Indicates Set 5/8" Iron Rod

SCALE: 1" = 100'

COUNTY SURVEYORS FILE DATA
 DO NOT REMOVE FROM OFFICE

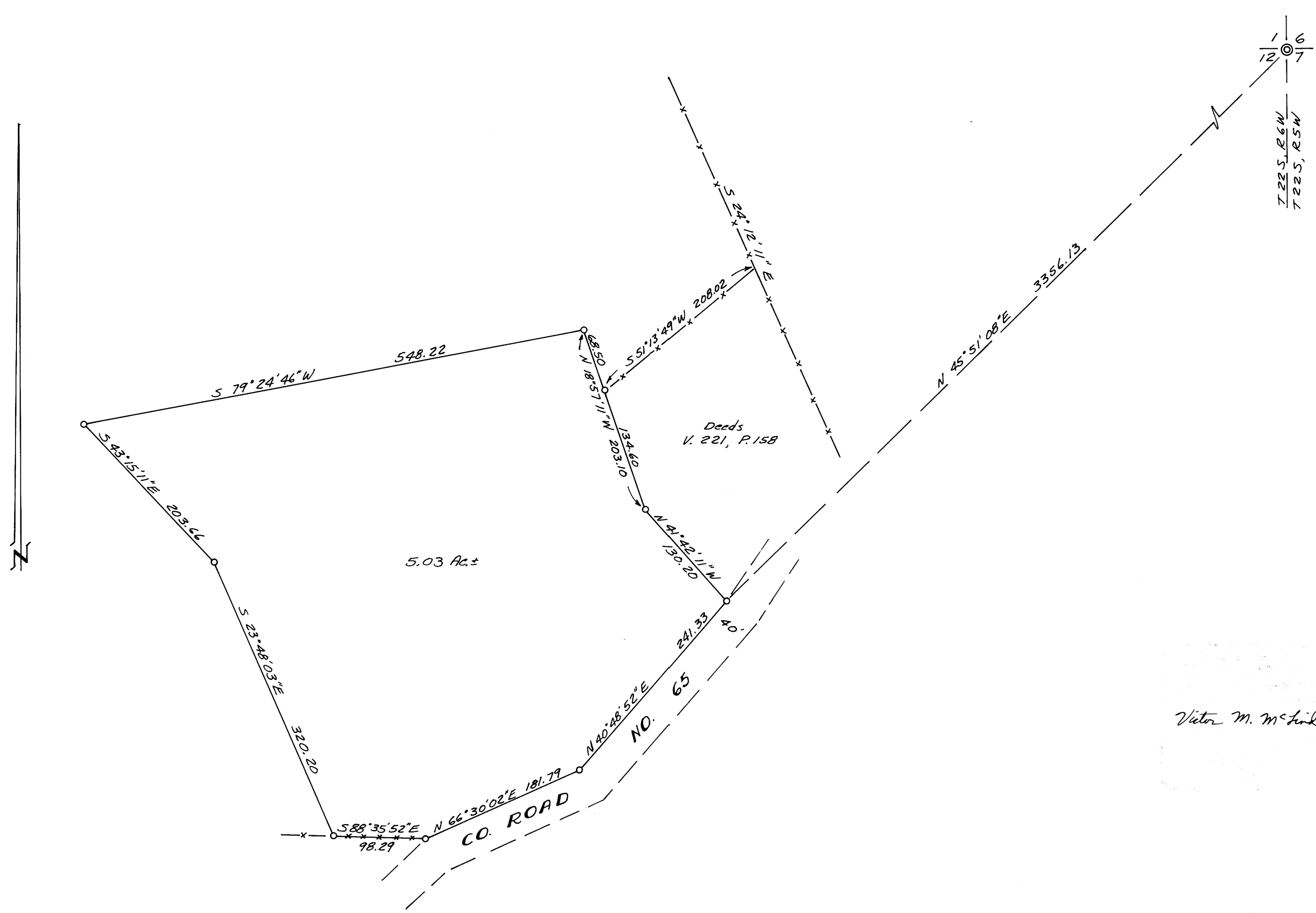
FILED 20
 RECEIVED

FEB 17 1972

COUNTY SURVEYOR
 DOUGLAS COUNTY, ORE

Section Corner
 Pd. Brass Cap set by
 Co. Surveyor in 1961

T22S, R6W
 T22S, R5W



Victor M. Melind

M 44-43

MAP FILE M 44-43