

SURVEY TO RESET A LOST MONUMENT WHERE
 ORIGINALLY SET BY GEO. C. BAKER, L.S. NO. 77, FOR
 C.E. 1/16 COR., SEC. 30, T. 32 S., R. 5 W., W.M., ORE.

SCALE = 1 INCH = 200'

FILED
 RECEIVED

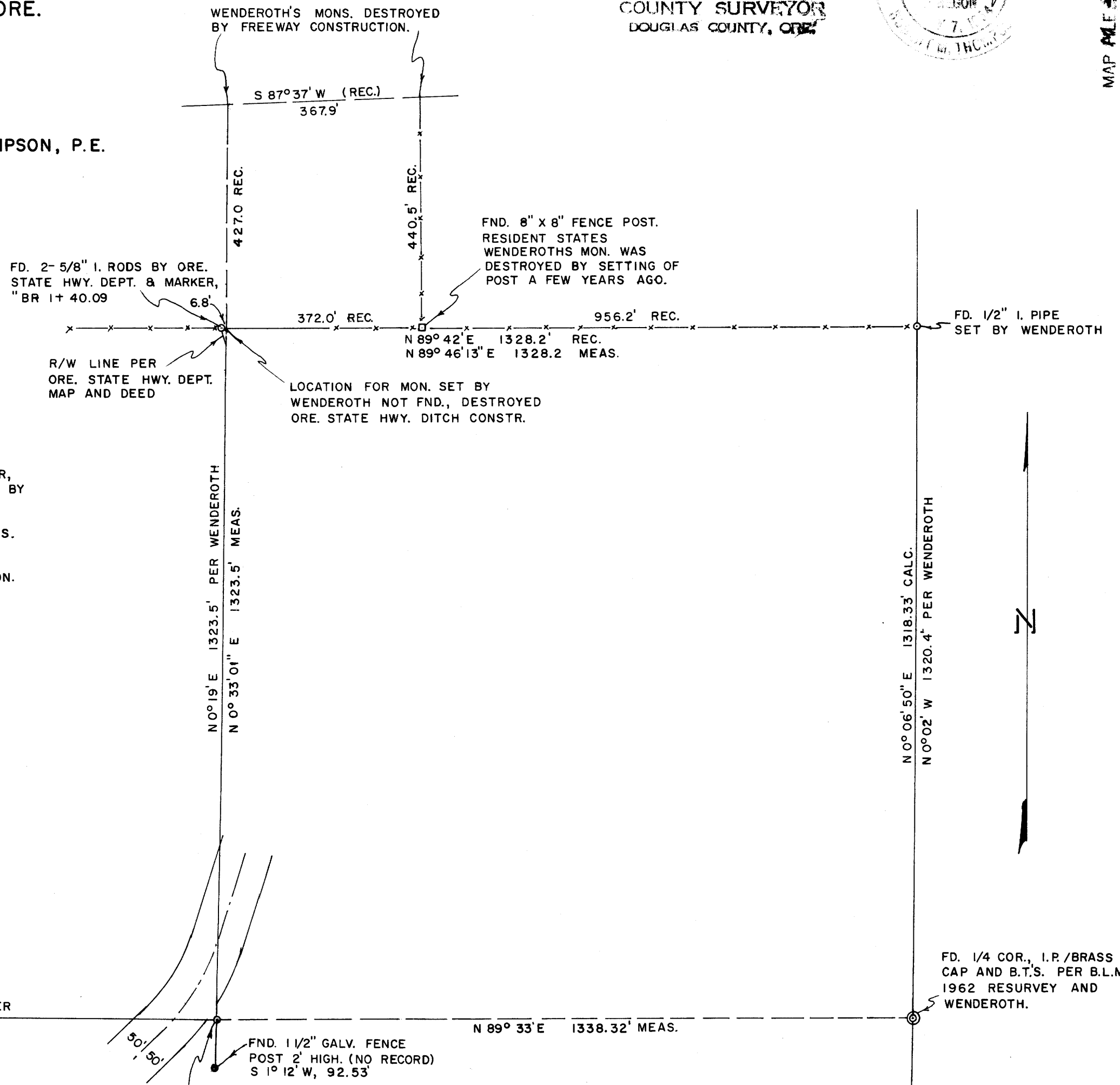
FEB 14 1972.

COUNTY SURVEYOR
 DOUGLAS COUNTY, ORE.



SEPTEMBER 16, 1969.
COUNTY SURVEYORS FILE DA
DO NOT REMOVE FROM OFFICE

ROBT. M. THOMPSON, P.E.
 A. E. MINATO



NOTES:

THIS SURVEY DEPENDENT UPON PREVIOUS SURVEY BY GEORGE C. BAKER, C.S. FILE NO. 40/3, AND AS PARTLY RESURVEYED AND SUPPLEMENTED BY GEO. J. WENDEROTH SURVEY C.S. FILE NO. M32-2.

BEARINGS BASED ON SOLAR OBS'N TAKEN UNDER ADVERSE CONDITIONS.

THIS SURVEY WAS DONE FOR AND THIS MAP WAS PREPARED FOR KENNETH B. ROBERTSON, 1071 NE HEFLEY ST., GRANTS PASS, OREGON.

MONS. SET BY BAKER & WENDEROTH DESTROYED BY ROAD CONSTRUCTION. FD. LOG FROM BAKER'S B.T. (22" W. FIR, WITH SCAR) IN DEBRIS PILE. STUMP NOT FND. I RESET CORNER FROM BAKER'S RECORD MEAS. TO WEST AND WENDEROTH'S RECORD MEAS. TO NORTH. I SET 1" I. PIPE, SCRIBE "3683 BT ON: 12" W. FIR, S 72° E, 31.6' AND 22" D. FIR, N 30° E, 78.2'.

MAP FILE 44-37
 C.S. File No. 55/235

MAP FILE 44-37

FILED
RECEIVED 27

FEB 14 1972

Survey to Reset a Lost Monument Where Originally Set by Baker, L.S. No. 77, for CE 1/16 Corner, Section 30, T32S, R5W, W.M., Oregon
COUNTY SURVEYOR
DOUGLAS COUNTY, OREGON

Narrative Description to comply with Par. 209.250, O.R.S.

for: Kenneth B. Robertson, 1071 NE Hefley Street, Grants Pass, Oregon

Purpose: To restore the above said monuments to the position where originally set.

Precedure:

The lost monument had been destroyed by road construction. It was originally set (a 1½"x7' galvanized iron fence post with a scribed 22"W. Fir Tree bearing S 55°15'W 9.2') by Baker in April, 1947, per County Surveyor File No. 40/3. Baker's map and field notes show that he tied together sufficient Governemnt Corners, by traversing, to compute the partial subdivision of Section 30. He then ran on a computed bearing and distance to a position at which he set a 1½" x 7' galv. iron fence post and oak stake for the center of Section 30. Thence he ran Easterly on a computed bearing and distance, and set a monument and bearing tree (as described above) for the CE 1/16 corner. He then set a monument for the E 1/16 corner $\frac{30}{21}$, and ran ½ mile northerly to his previously set CE 1/16 corner, closing with a small error.

In a later survey (C.S. File No. M 32-2) Geo. J. Wenderoth, L.S. No. 5, ran Southerly, from the North Section line to Baker's CE 1/16 corner monument. His map indicated finding only Baker's White Fir bearing tree, and from this, setting a 1 inch iron drill. Wenderoth's survey also indicated his setting of a monument for the NE 1/16 Corner 1323.5 feet northerly, and additional monuments northerly and easterly from said NE 1/16 Corner (as shown on my map). Wenderoth's survey also indicated that he surveyed the north half of the East Section line, setting a monument for the N 1/16 cor. 30 † 29, in the process; further, he ran or computed the line between the monuments which he set for 1/16 corners.

After my survey retraced the most pertinent parts of the Baker and Wenderoth surveys, the following became evident:

- 1) Neither of the two monuments found near the NE 1/16 corner location were the one set by Wenderoth (who called for a ½ inch pipe, rather than rod). Wenderoth's monument appeared to have been destroyed by ditch construction, and those of his other monuments within 500 feet had been destroyed by other means.
- 2) The above 2 rods appeared to be on an extension of the line indicated by Wenderoth for the North line of the SE¼ NE¼.
- 3) Baker's total distance for the East half of his East-West center line did not check with my measurements(He had computed the Easternmost ½ mile of this line as 1301.10 feet, as compared to my measurement of 1338.32 feet).

Weighing the above evidence and facts versus the probable position of the lost corner, it appeared that the missing monument could best be restored by using the two closest and most direct of the older record measurements, from existing control. Accordingly I set a 1 inch iron pipe and bearing trees by measuring Southerly 1323.5 feet from control established by Wenderoth and the Oregon State Highway Dept., and Easterly 1301.10 feet from Baker's center of section monument, as shown on my map.

My survey does not represent that any of the monuments, found or set, would fall in true and legal position, should this section ever be re-subdivided.

September 16, 1969

C.S. File 55 1235



Map File M 44 / 37