

SURVEY IN SEC. 29, T26S, R6W, WM., DOUGLAS CO., ORE.

Surveyed for Thomas D. Piercey by Victor M. McLind

February 1972

Scale: 1" = 200'

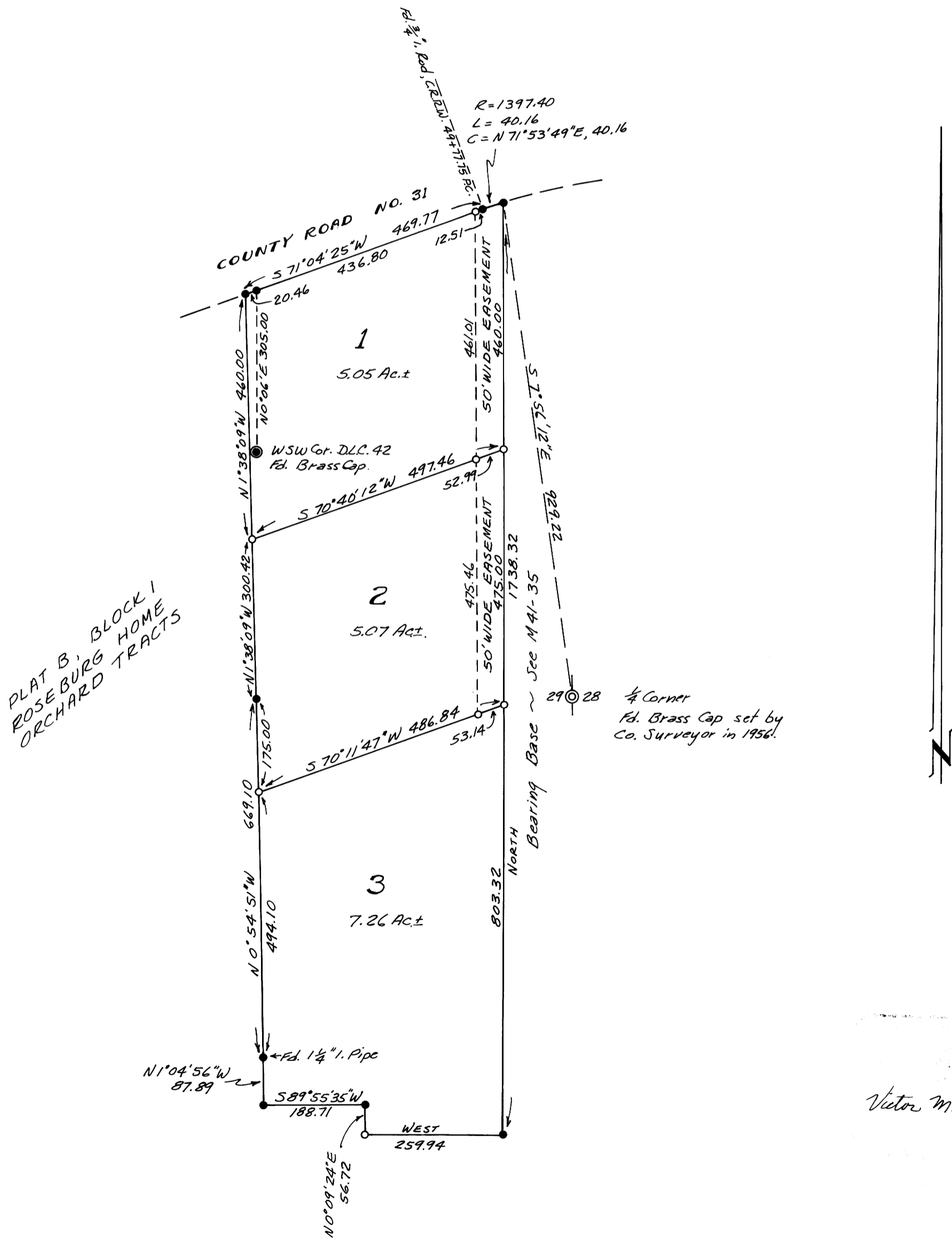
**COUNTY SURVEYORS WILL NOT DO
DO NOT REMOVE FROM OFFICE**

- ~ Fd. $\frac{5}{8}$ " Iron Rod, unless otherwise noted.
- o ~ Set $\frac{5}{8}$ " Iron Rod

FILED
RECEIVED

FEB 9 1972

COUNTY SURVEYOR
DOUGLAS COUNTY, ORE.



Victor M. McLind