

COUNTY SURVEYORS FILE DATA
DO NOT REMOVE FROM OFFICE

FILED
RECEIVED

FEB 3 1972

COUNTY SURVEYOR
DOUGLAS COUNTY, ORE.

SURVEY FOR:
STATE OF OREGON - DEPARTMENT OF FORESTRY
SECTION 4, T22 S, R11 W, WM

DOUGLAS COUNTY, OREGON
TRANSIT AND CHAIN SURVEY BY: D. SMITH, W. COOK, K. GRAHAM,
W. BODEWIG, D. REDDING AND R. GRAIG
DRAWN BY: D. SMITH
AUGUST 11, 1971
SCALE: 1" = 400'

LEGEND

OSBF P/C = OREGON STATE BOARD OF FORESTRY 1/2" x 36" GALVANIZED
IRON PIPE WITH 3" BRONZE CAP
WPCP = 4" x 4" x 72" WHITE PAINTED CEDAR POST
YMLP = YELLOW METAL LOCATION POSTER
IG = IN GROUND
BTS = BEARING TREES
CRS = COURSE
BO = BEARING OBJECT
[] = RECORD DISTANCE IN CHAINS

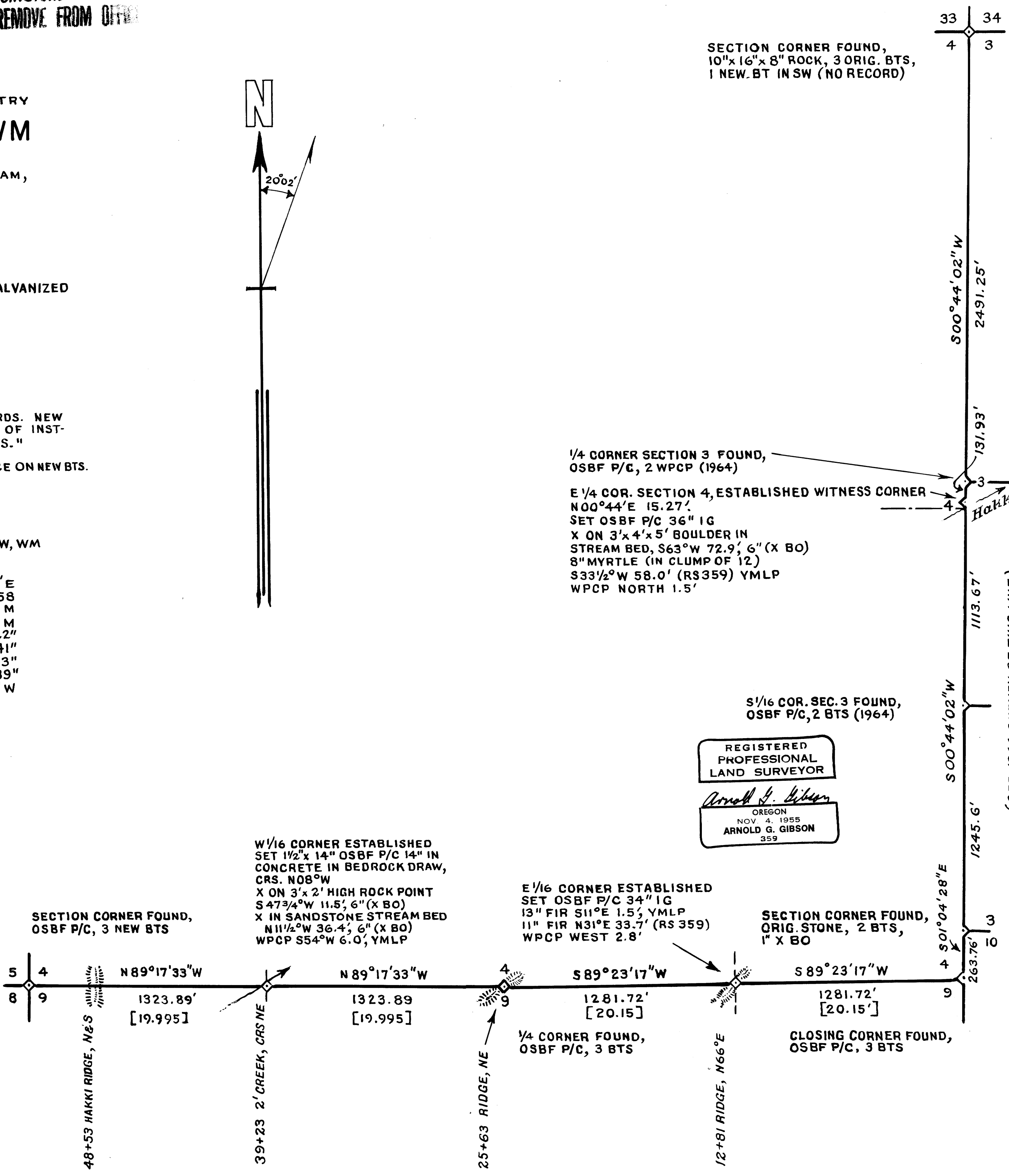
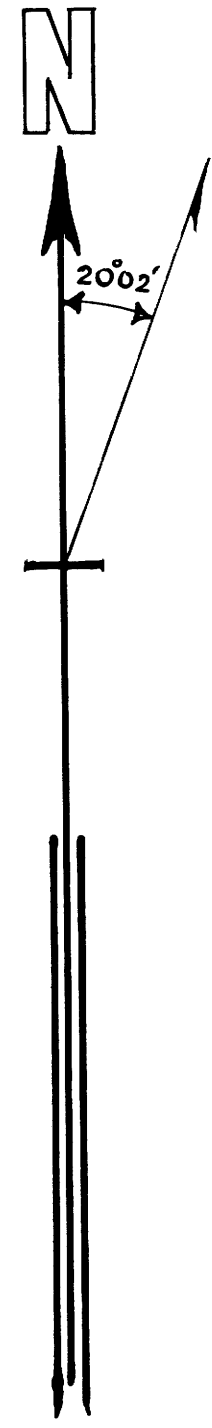
FOR DETAILED REPORT ON FOUND CORNERS SEE COUNTY RECORDS. NEW
CORNERS AND ACCESSORIES MARKED ACCORDING TO "MANUAL OF INST-
RUCTIONS FOR THE SURVEY OF THE PUBLIC LANDS OF THE U. S."

OTHER MARKINGS AS INDICATED (). DISTANCES TO FACE ON NEW BTS.
ESTABLISHED = NEW CORNERS SET

SOLAR OBSERVATION

AS TAKEN BY A. GIBSON FOR SECTION LINE 3 & 10, T22 S, R11 W, WM
OSBF SURVEY 1958

MAGNETIC VARIATION	20° 02' E
DATE	JANUARY 21, 1958
STANDARD TIME	10:09:00 A.M.
LOCAL TIME	9:53:02 A.M.
SUN'S DECLINATION	S 19° 53' 22"
REF. & PAR. CORRECTION	-2' 41"
LATITUDE	N 43° 40' 43"
SUN'S ALTITUDE	18° 51' 39"
PLACE OF OBSERVATION	S 87° 45' 50" W
848.3' FROM SEC. CORNER 3 & 10 (EAST END)	



M 44-34

M 44-34