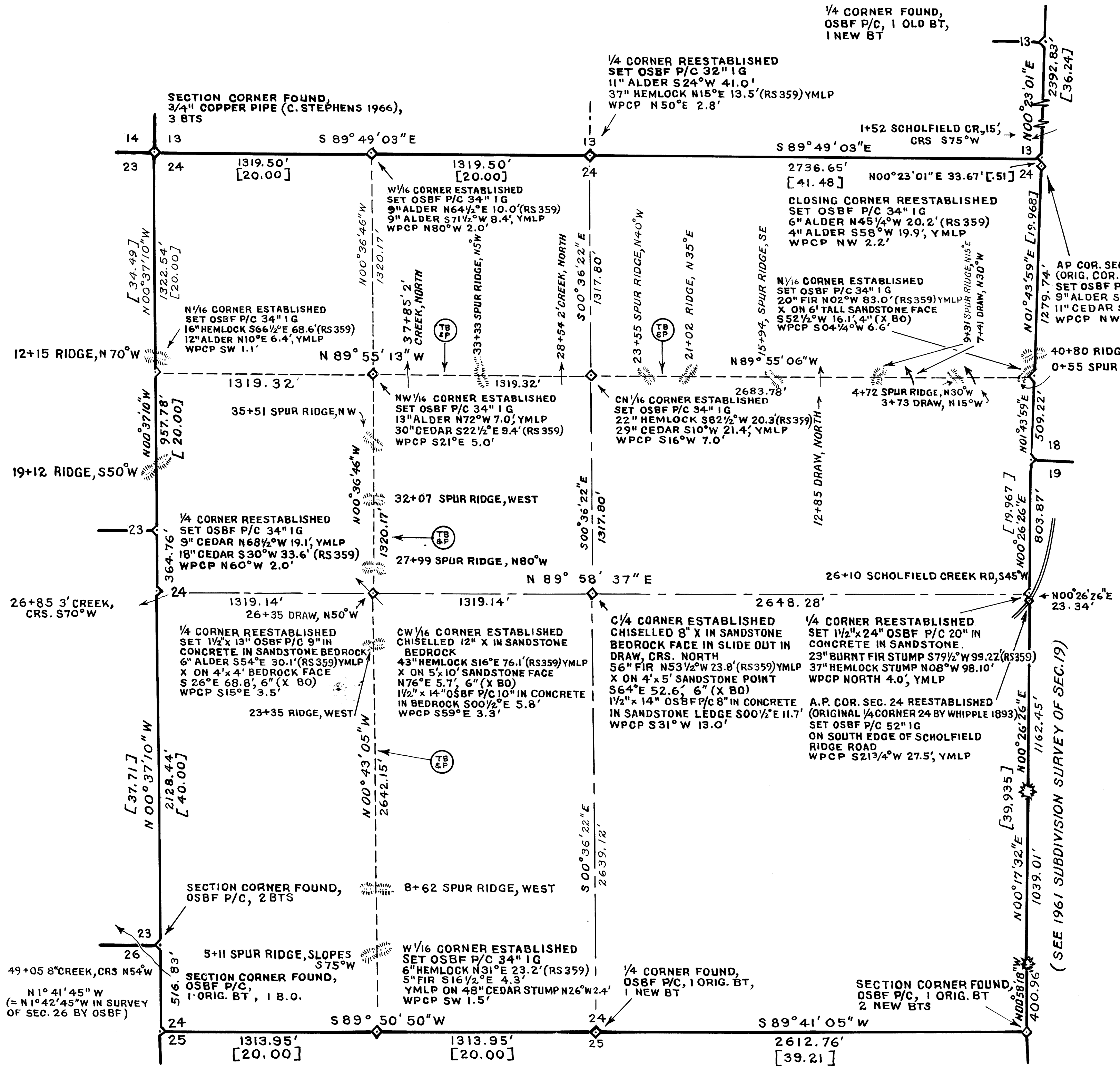


SURVEY FOR:  
STATE OF OREGON - DEPARTMENT OF FORESTRY  
**SECTION 24, T22S, R12W, WM**  
DOUGLAS COUNTY, OREGON

TRANSIT & CHAIN SURVEY BY: C.W. COOK, D. BROWN, D. REDDING,  
D. SMITH, A. BELLEQUE, D. TANKERSLEY, C. ADAMS & S. SIMONS

DRAWN BY: D. SMITH  
JUNE 23, 1971  
SCALE: 1" = 400'



- LEGEND**
- OSBF P/C = OREGON STATE BOARD OF FORESTRY 1/2"x 36" GALVANIZED IRON PIPE AND 3" BRONZE CAP
  - WPCP = 4"x 4" x 72" WHITE PAINTED CEDAR POST
  - YMLP = YELLOW METAL LOCATION POSTER
  - IG = IN GROUND
  - TB = TRUE BLAZED AND POSTED
  - BTS = BEARING TREES
  - CRS = COURSE
  - [ ] = RECORD (ORIGINAL) DISTANCE IN CHAINS
  - BO = BEARING OBJECTS (X ON ROCK)

FOR DETAILED REPORT ON FOUND CORNERS SEE COUNTY RECORDS. NEW CORNERS AND ACCESSORIES MARKED ACCORDING TO "MANUAL OF INSTRUCTIONS FOR THE SURVEY OF THE PUBLIC LANDS OF THE U.S." OTHER MARKINGS AS INDICATED ( ). DISTANCES TO FACE ON NEW BTS. ESTABLISHED = NEW CORNERS SET REESTABLISHED = LOST GLO, CADASTRAL OR OTHER CORNERS RESET BY PROPORTIONATE MEASUREMENT, OR AS NOTED

**SOLAR OBSERVATION**  
AS TAKEN BY ELBERT DRIVER FOR SCHOLDFIELD CREEK ROAD

MAGNETIC VARIATION	20° 21' E
DATE	MARCH 10, 1960
STANDARD TIME	10:08:12 A.M.
LOCAL TIME	9:51:51 A.M.
SUN'S DECLINATION	S 3° 52' 58"
REF. & PAR. CORRECTION	-1' 23"
LATITUDE	N 43° 39' 42"
SUN'S ALTITUDE	32° 48' 07"
PLACE OF OBSERVATION	S 80° 30' 34" W 1383.4 FT. FROM 1/4 COR. 13 & 14, T22S, R12W, WM

REGISTERED  
PROFESSIONAL  
LAND SURVEYOR  
*Arnold G. Gibson*  
OREGON  
NOV. 4, 1955  
ARNOLD G. GIBSON  
359

