

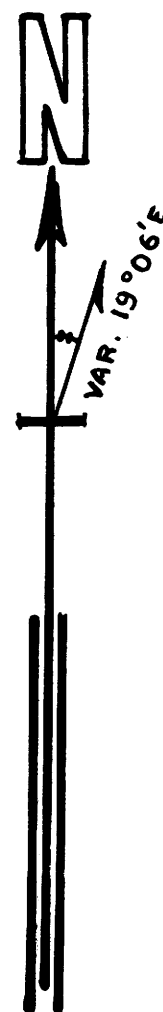
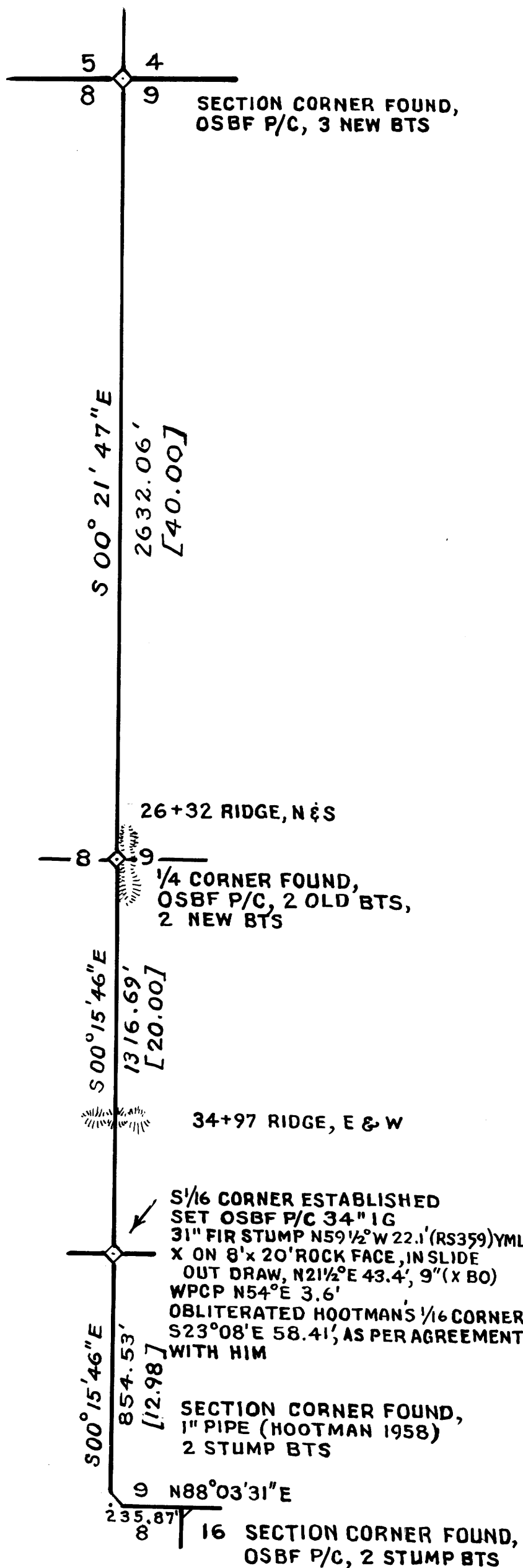
COUNTY SURVEYORS FILE DATA
DO NOT REMOVE FROM OFFICE

FILED
RECEIVED

FEB 3 1972

COUNTY SURVEYOR
DOUGLAS COUNTY, ORE

A-65



SURVEY FOR:
STATE OF OREGON - DEPARTMENT OF FORESTRY
SECTION LINE 8&9, T22S, R11W, WM

DOUGLAS COUNTY, OREGON
TRANSIT AND CHAIN SURVEY BY: W. COOK, R. CRAIG, D. REDDING,
W. BODEWIG AND K. GRAHAM
DRAWN BY: D. SMITH
AUGUST 13, 1971
SCALE: 1" = 400'

LEGEND

- OSBF P/C = OREGON STATE BOARD OF FORESTRY 1/2" x 36" GALVANIZED IRON PIPE AND 3" BRONZE CAP
- WPCP = 4" x 4" x 72" WHITE PAINTED CEDAR POST
- YMLP = YELLOW METAL LOCATION POSTER
- IG = IN GROUND
- BTS = BEARING TREES
- [] = RECORD DISTANCE IN CHAINS
- BO = BEARING OBJECT

FOR DETAILED REPORT ON FOUND CORNERS SEE COUNTY RECORDS. NEW CORNERS AND ACCESSORIES MARKED ACCORDING TO "MANUAL OF INSTRUCTIONS FOR THE SURVEY OF THE PUBLIC LANDS OF THE U. S." OTHER MARKINGS AS INDICATED (____), DISTANCES TO FACES ON NEW BTS ESTABLISHED = NEW CORNERS SET

SOLAR OBSERVATION

AS TAKEN BY D. SMITH FOR SECTIONS 15 & 16, T22S, R11W, WM

MAGNETIC VARIATION	19° 06' E
DATE	JULY 30, 1970
STANDARD TIME	2:49:43 PM
LOCAL TIME	2:33:42 PM
SUN'S DECLINATION	N 18° 40' 18"
REF. & PAR. CORRECTION	-00' 40"
LATITUDE	N 43° 39' 02"
SUN'S ALTITUDE	50° 01' 20"
PLACE OF OBSERVATION	S84° 46' 52" E
514.73' FROM SECTION CORNER 15, 16, 21 & 22, T 22 S, R 11 W, WM	

REGISTERED
PROFESSIONAL
LAND SURVEYOR

Arnold G. Gibson
OREGON
NOV. 4, 1955
ARNOLD G. GIBSON
359

RESTORED CORNER FOR STATE OF OREGON--DEPARTMENT OF FORESTRY

One quarter corner common to Sections 8 and 9, Township 22 South, Range 11 West, W.M., Douglas County, Oregon.

ORIGINAL

No evidence of original corner found.

REESTABLISHMENT by Warren D. Hootman, 1958

Iron pipe (missing) from which a:

- 20" Fir bears N64°E 28.2 ft.; now 21", scribe marks visible in partially closed face.
- 22" Fir bears S48°W 2.0 ft.; now 26", scribes 1S visible in partially closed face.

RESTORED

Set 1½" x 36" galvanized iron pipe with 3" bronze cap marked "OREGON STATE BOARD OF FORESTRY 1/4 S8 S9 1971 RS359", 34 inches in ground, and from which a:

- 27" Fir bears S03½°W 92.7 ft. to face; scribed 1/4 S8 BT RS359.
- 21" Fir bears N34½°E 73.5 ft. to face; scribed 1/4 S9 BT.

Set 4" x 4" x 72" white painted Cedar post 3.5 ft. N21°E of corner pipe. Oregon State Forestry Department metal location poster on 21" Fir BT N34½°E 73.5 ft. Also poster on 26" Fir BT (Hootman) S48°W 2.0 ft. *Ren. #17*

Dated October 27, 1971

Restored by *Charles W. Cook* under my direction.
Charles W. Cook, Engineer

REGISTERED
PROFESSIONAL
LAND SURVEYOR

Arnold G. Gibson
OREGON
NOV 4 1955
ARNOLD G. GIBSON
359

Present and witnessed by Kenneth L. Grahm
FILED RECEIVED William A. Bodewig
Raymond S. Craig

FEB 3 1972

COUNTY SURVEYOR
DOUGLAS COUNTY, ORE.

O #114

C. S. File No. 55/233-7