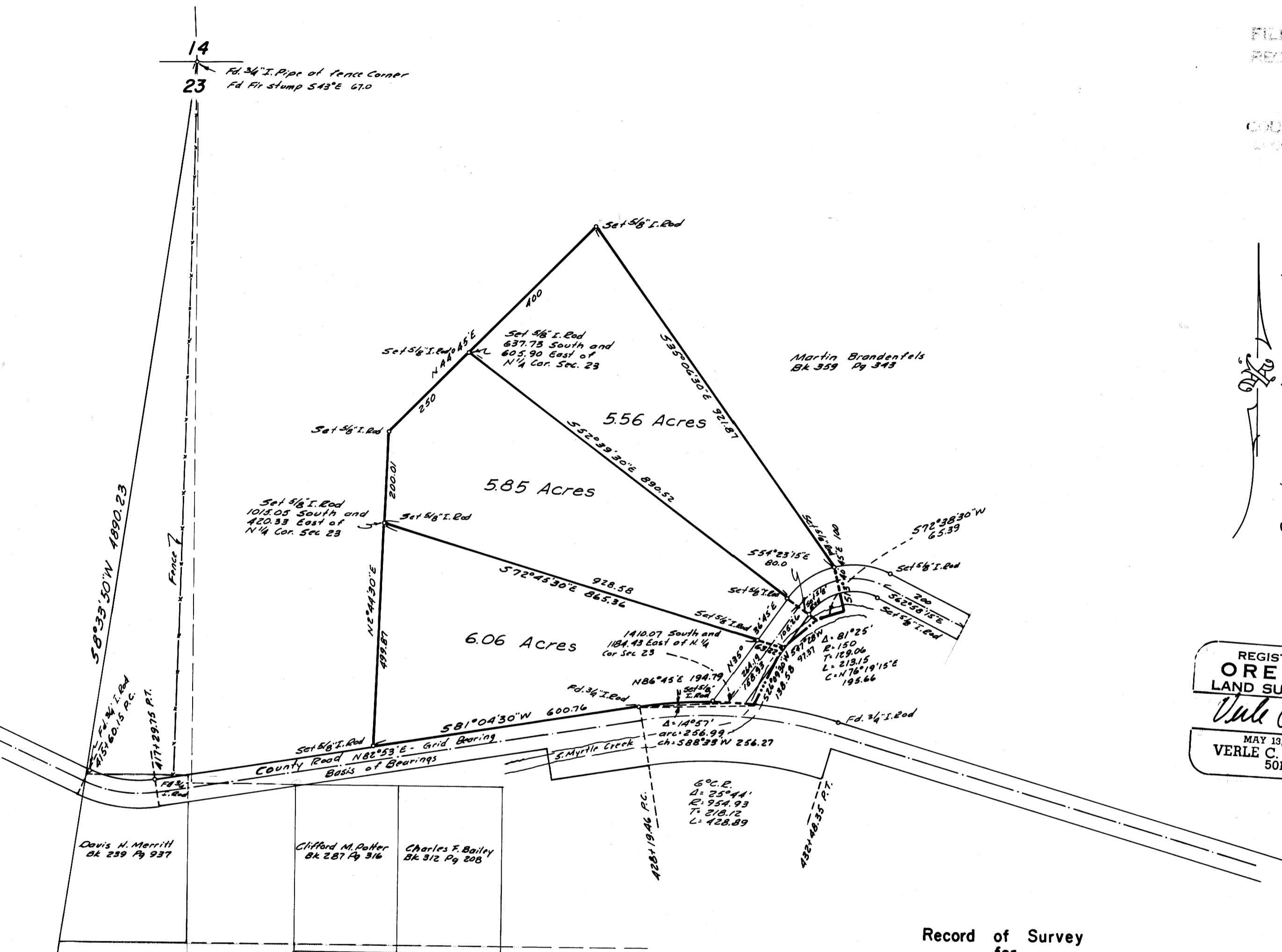


FILED
RECORD

COUNTY SURVEYOR
DOUGLAS COUNTY, OREGON

Bearings are true, based on
1048.30" rotation from County
Road Grid bearings.

REGISTERED
OREGON
LAND SURVEYOR
Verle C. Moore
MAY 13, 1960
VERLE C. MOORE
501



Record of Survey
for
COUNTRY PROPERTIES INC.
in the
Northeast Quarter of Section 23, T.29S., R.4W. W.B.&M.
Douglas County, Oregon
Scale 1" = 200'
December 1, 1966

COUNTY SURVEYORS FILE DATA
DO NOT REMOVE FROM OFFICE

14
23
Fd. 3/4" I. Pipe at Fence Corner
Fd Fir stump S43°E 67.0

Set 5/8" I. Rod
1015.05 South and
420.33 East of
N 1/4 Cor. Sec. 23

Set 5/8" I. Rod
637.73 South and
605.90 East of
N 1/4 Cor. Sec. 23

Martin Brandenfels
Bk 359 Pg 343

1410.07 South and
184.43 East of N 1/4
Cor. Sec. 23

Davis H. Merrill
Bk 259 Pg 937

Clifford M. Potter
Bk 287 Pg 316

Charles F. Bailey
Bk 312 Pg 208

60° E.
D = 25° 44'
R = 954.93
T = 218.12
L = 428.89

23
26
Fd 1" I. Pipe with brass cap
mkd County Surveyors Office 1956
T. 29S., R. 4W. 1/4 S
23
26
Fd 6" NS 82° 27.0' - Gorse
Fd Laurel 24" S 54° E 16.3' to center of tree

MAP FILE M 44 - 31

SEE M 33 - 65

M 44 - 31