

SURVEY IN BLOCKS 1, 6, & 7, DENN SUBDIVISION (PARTIALLY VACATED)

Surveyed for William M. Rose by Victor M. McLind

January 1972

Bearings based on map of Denn Subdivision, Vol 6, Pg. 50

o ~ Set $\frac{5}{8}$ " Iron Rod

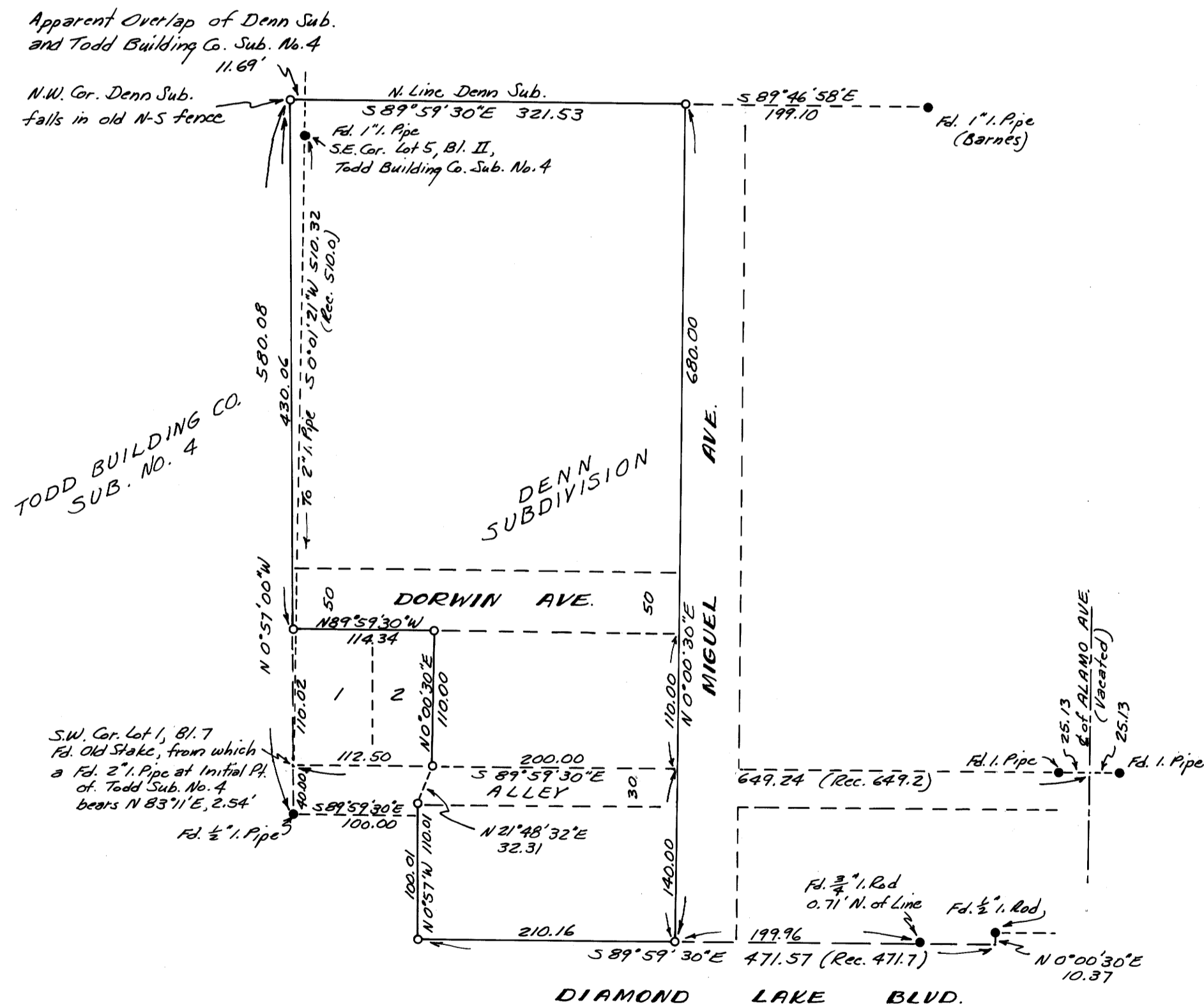
Scale: 1" = 100'

COUNTY SURVEYORS FILE DATA
DO NOT REMOVE FROM OFFICE

FILED *LM*
RECEIVED

JAN 27 1972

COUNTY SURVEYOR
DOUGLAS COUNTY, ORE.



REGISTERED
PROFESSIONAL
LAND SURVEYOR

Victor M. McLind

OREGON
JULY 17 1970
VICTOR M. MCLIND
934

MAP FILE M 44 - 30

MAP FILE M 44 - 30