

SURVEY IN SECTIONS 29 & 32, T26S, R3W, W.M.
 Surveyed for Jean Talcott by Victor M. McLind
 January 1972

- Found $\frac{5}{8}$ " I. Rod
- Set $\frac{5}{8}$ " I. Rod

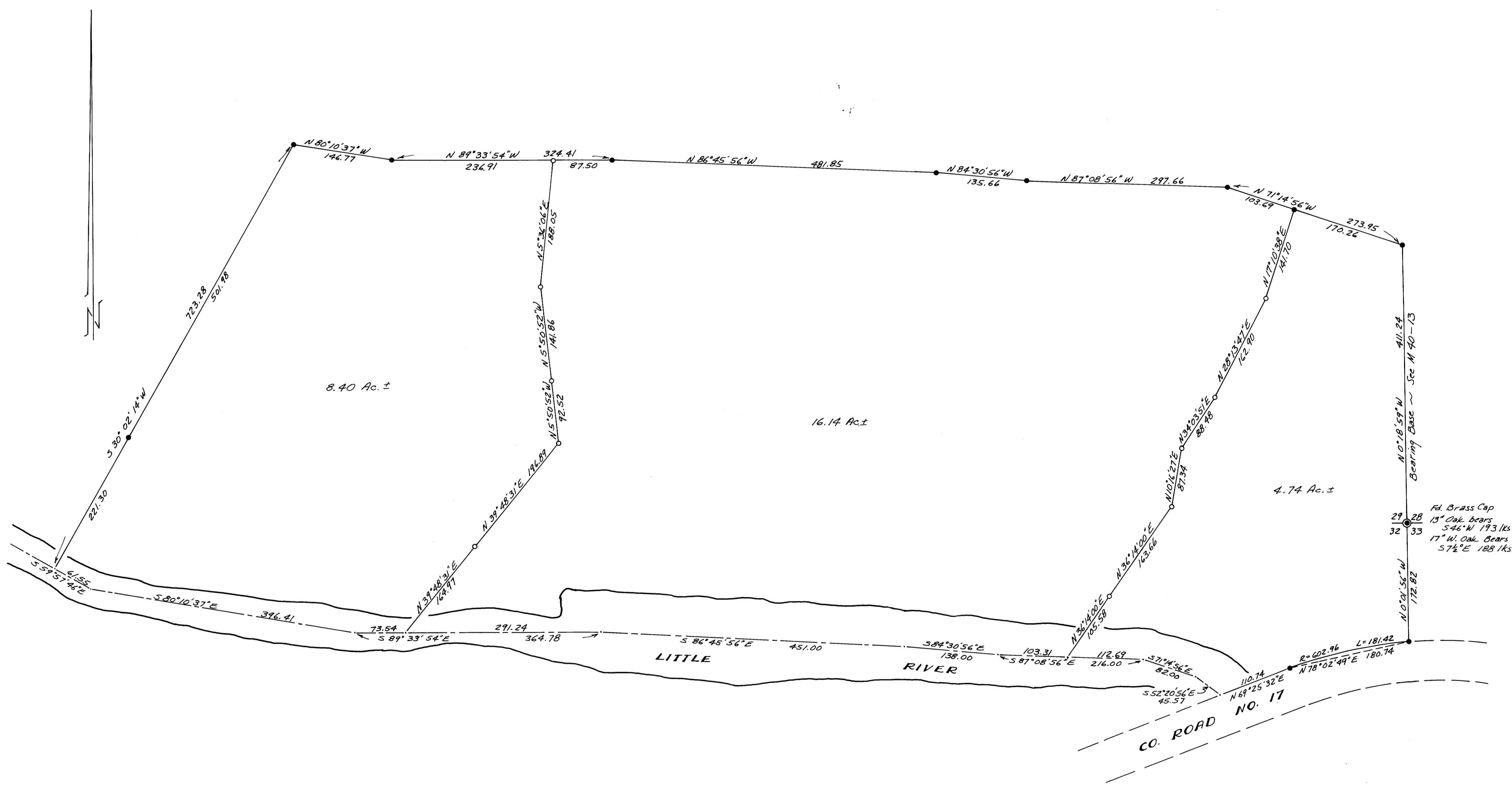
Scale: 1"=100'
 COUNTY SURVEYORS FILE DATA
 DO NOT REMOVE FROM OFFICE

REGISTERED
 PROFESSIONAL
 LAND SURVEYOR

Victor M. McLind

OREGON
 JULY 17, 1970
 VICTOR M. McLIND
 934

PLAT
 1972
 COUNTY SURVEYORS
 DEPT. OF AGRICULTURE



M44-27

M44-27