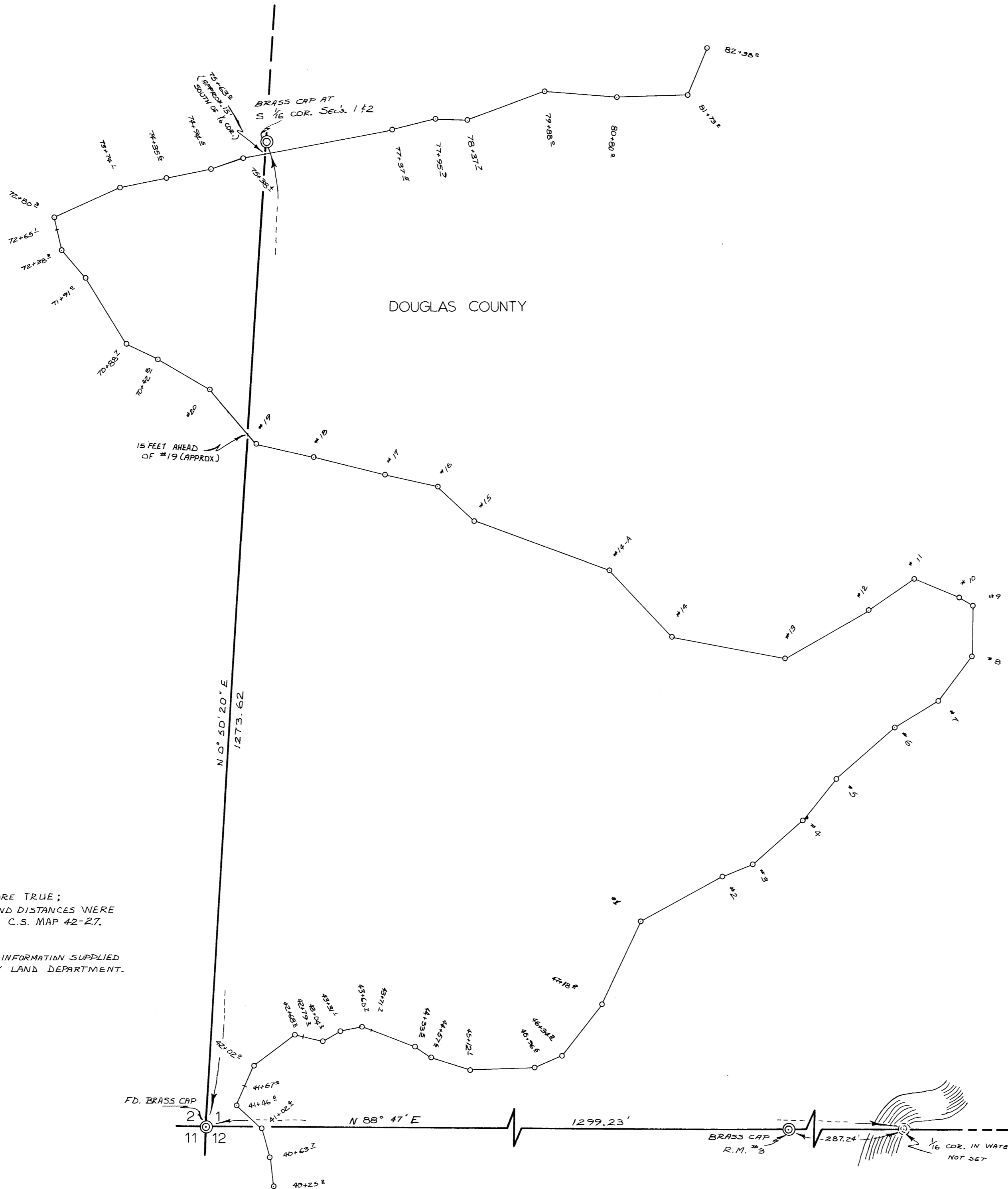


INTERNATIONAL PAPER COMPANY



NOTE: BEARINGS ARE TRUE;
 BEARINGS AND DISTANCES WERE
 TAKEN FROM C.S. MAP 42-27.

COMPASS TRAVERSE INFORMATION SUPPLIED
 BY DOUGLAS COUNTY LAND DEPARTMENT.

COUNTY SURVEYORS FILE DATA
 DO NOT REMOVE FROM OFFICE

COUNTY SURVEYOR'S OFFICE
 DOUGLAS COUNTY, OREGON

MAP TO SHOW RELATIONSHIP BETWEEN
 DOUGLAS COUNTY LAND DEPT. TRAVERSE
 AND SECTION LINES.

T22S, R12W, W.M.
 SECTIONS 1, 2, AND 12

Francis L. Ingram Deputy County Surveyor
 Drawn January, 1972 Scale 1" = 100'
 Drawn for Douglas County

REGISTERED
 PROFESSIONAL
 LAND SURVEYOR
 Francis L. Ingram
 OREGON
 1972