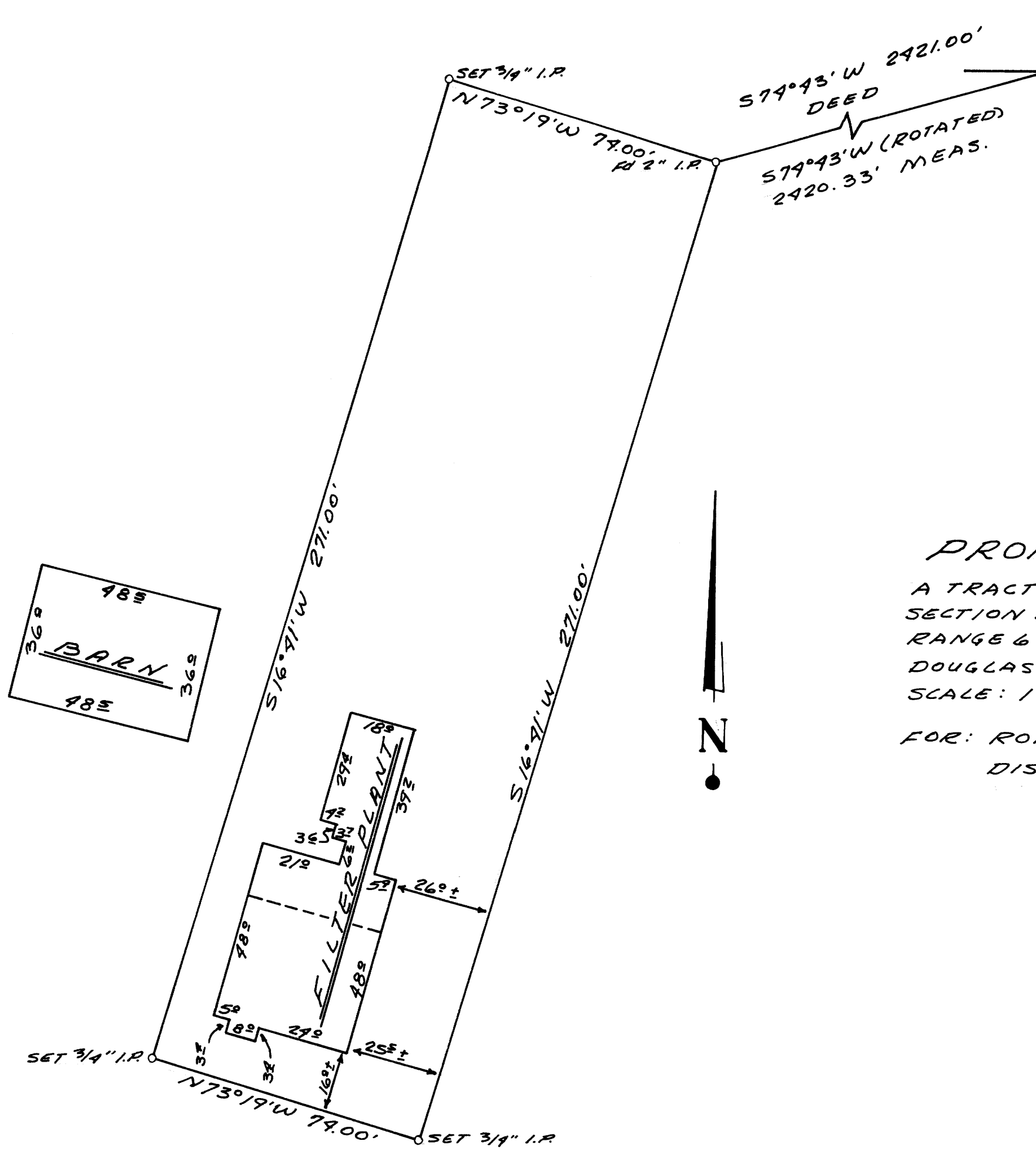


FILED
RECEIVED

COUNTY SURVEYOR
DOUGLAS COUNTY, OREGON



FR. BRASS CAP 1/4
CORNER BETWEEN
SECTIONS 14 & 15,
T28S, R6W, W.M.
DOUGLAS COUNTY,
OREGON

COUNTY SURVEYORS FILE DATA
DO NOT REMOVE FROM OFFICE

PROPERTY SURVEY
A TRACT OF LAND LOCATED IN
SECTION 15, TOWNSHIP 28 SOUTH,
RANGE 6 WEST, W.M.
DOUGLAS COUNTY, OREGON
SCALE: 1" = 30' 12-23-71
FOR: ROBERTS CREEK WATER
DISTRICT

REGISTERED
OREGON
LAND SURVEYOR
Robert W. Wade
OCTOBER 4, 1957
ROBERT W. WADE
433



ENGINEERS • PLANNERS

5TH AND HIGHLAND
COOS BAY, OREGON
269-1166

MAP FILE M 44 - 22

MAP FILE M 44 - 22