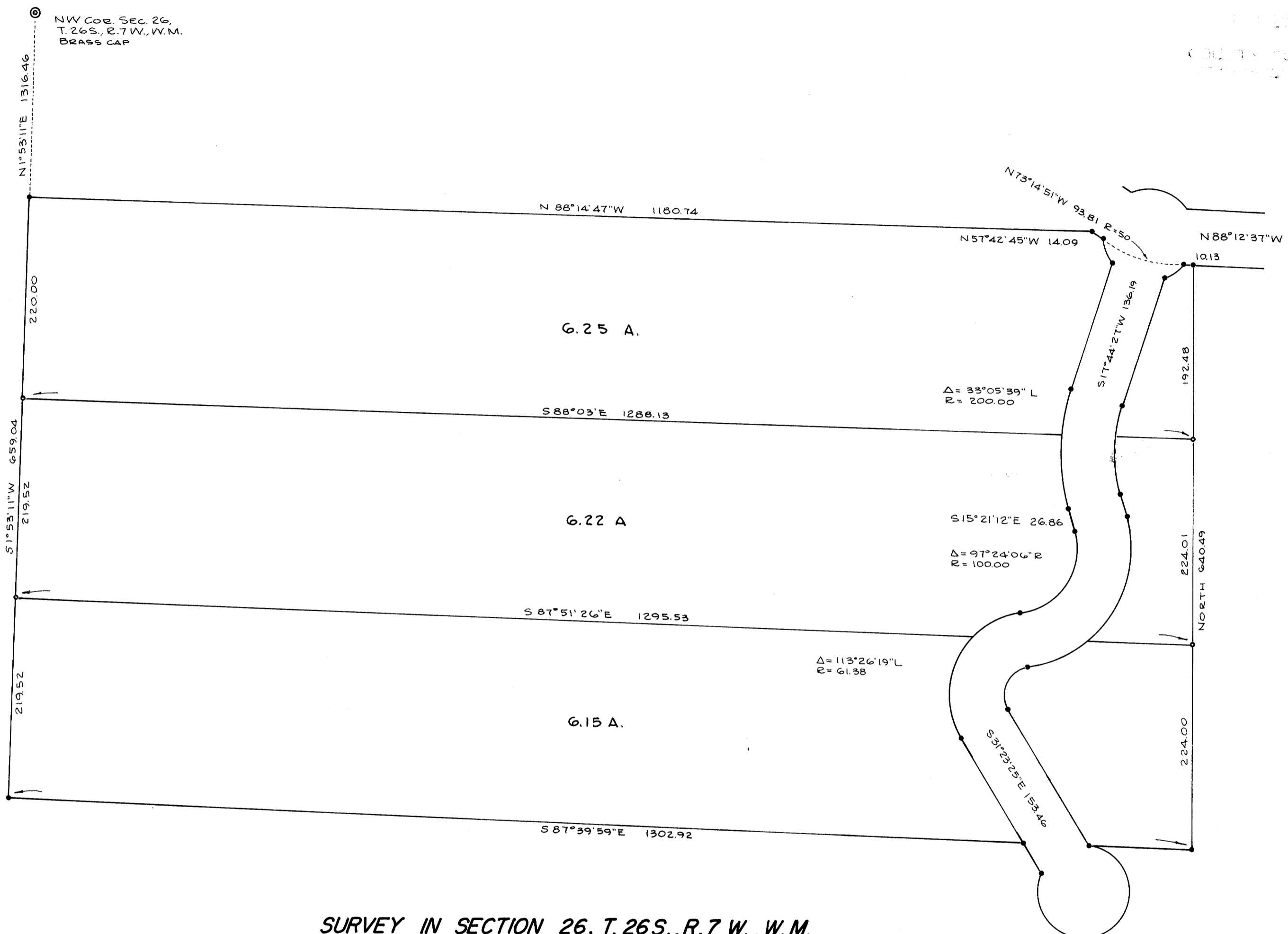
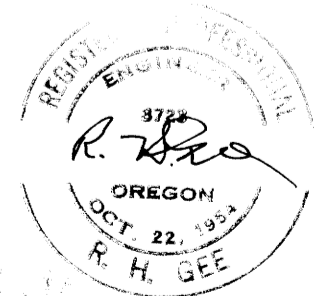


FILED
COUNTY CLERK
CLATSOP COUNTY, OREGON



SURVEY IN SECTION 26, T. 26S., R. 7 W., W.M.
 SURVEYED FOR EMIL RAMBERG, ET AL
 SURVEYED BY R. H. GEE - DECEMBER, 1971
 SCALE 1" = 100'

• DENOTES 5/8" I.R. FND.
 ○ DENOTES 3/8" I.R. SET
 BEARINGS BASED ON C.S. FILE M-42-12



COUNTY SURVEYOR FILE 644-21
 DO NOT REMOVE FROM OFFICE