

# SURVEY IN SECTIONS 21 & 28, T26S, R5W, W.M., DOUGLAS CO., ORE.

Surveyed for George Keller Realty by Victor M. McLind

DECEMBER 1971

SCALE: 1" = 200'

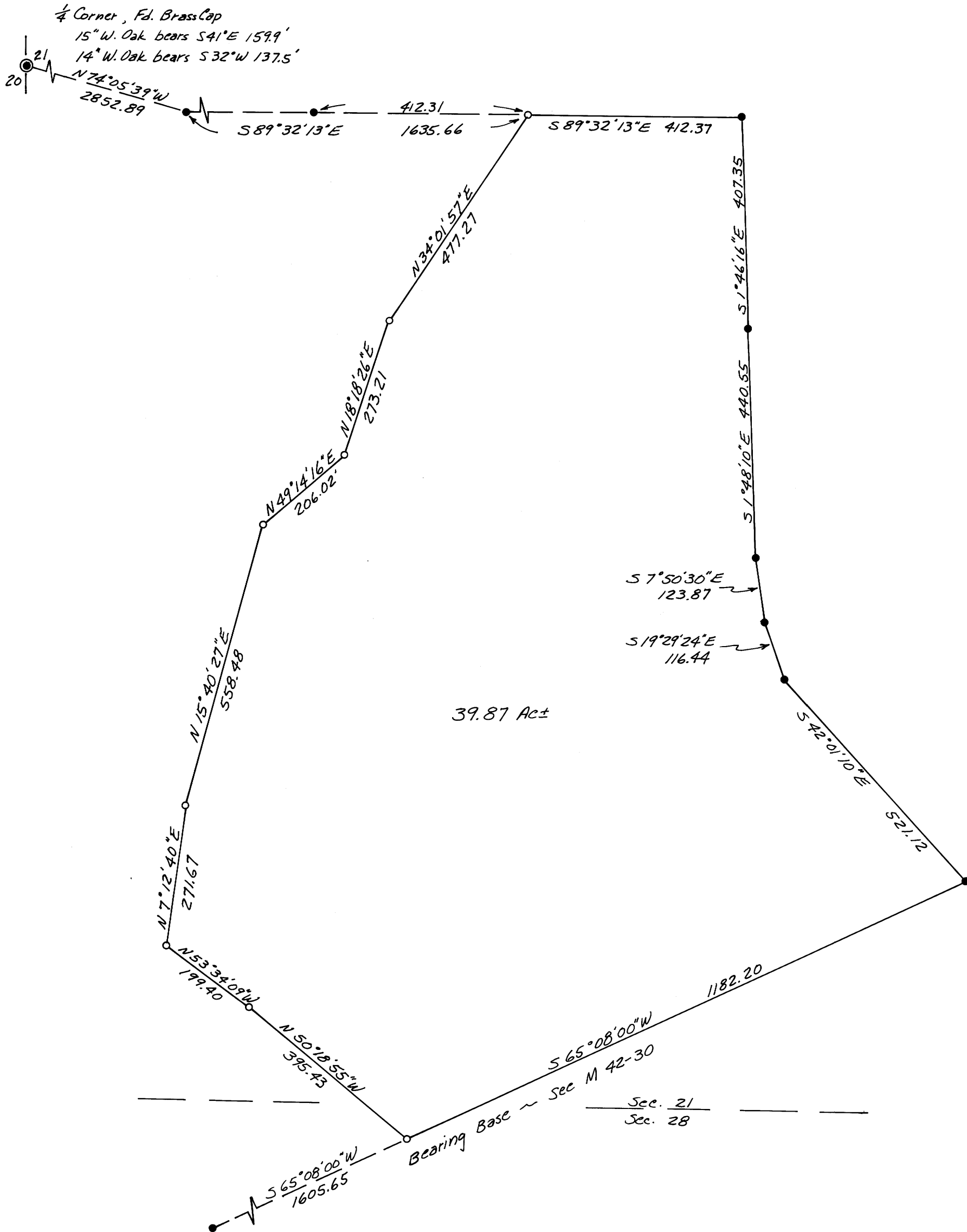
- ~ Set  $\frac{5}{8}$ " I. Rod
- ~ Found  $\frac{5}{8}$ " I. Rod

**COUNTY SURVEYORS FILE DATA  
DO NOT REMOVE FROM OFFICE**

FILED *SL*  
RECEIVED *2/3*

DEC 15 1971

COUNTY SURVEYOR  
DOUGLAS COUNTY, ORE.



Victor M. McLind