

SURVEY IN SECTION 20, TOWNSHIP 27 SOUTH, RANGE 7 WEST, WILLAMETTE MERIDIAN
Surveyed for Hayward Reed by Don E. Garrett
August, 1971

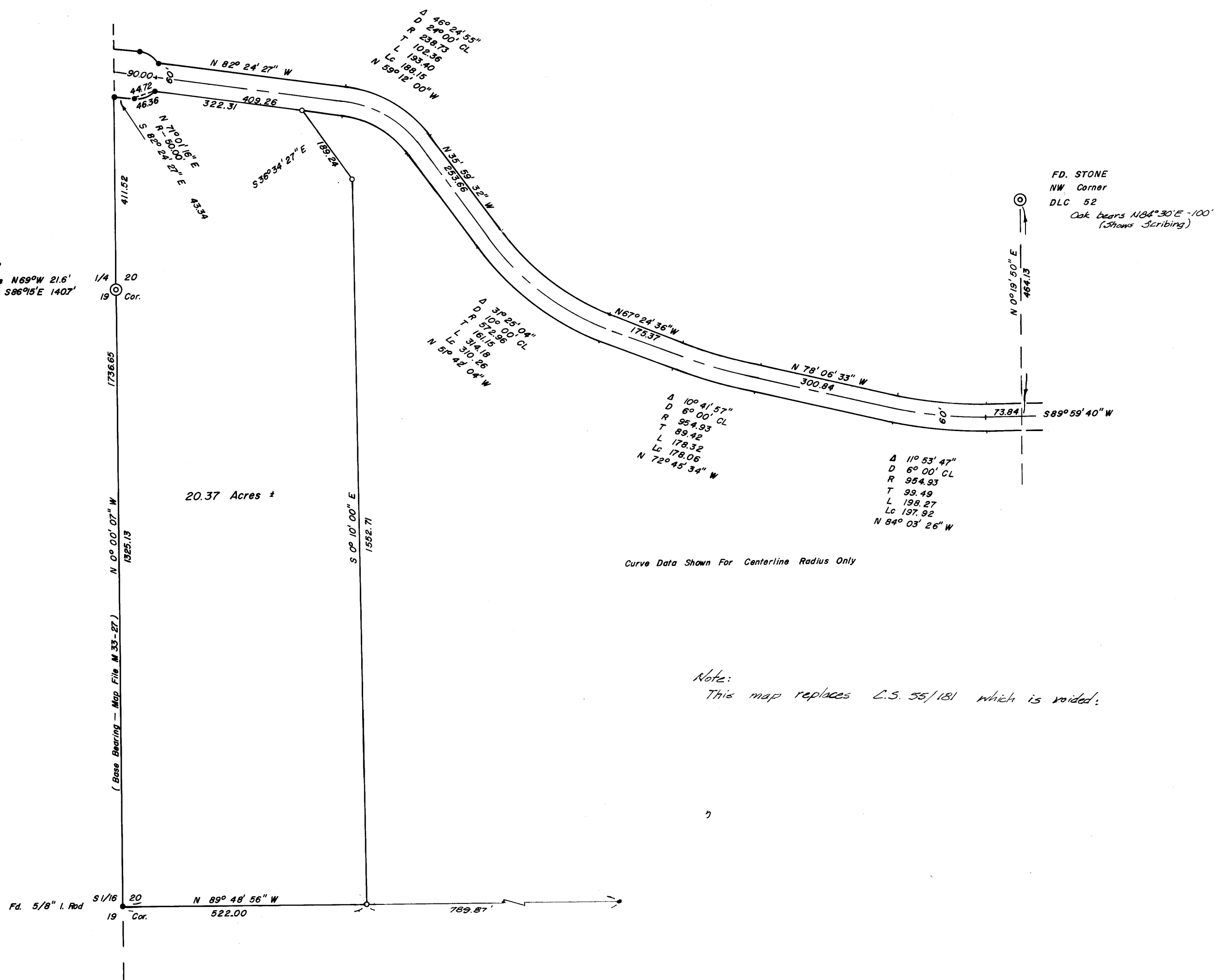
COUNTY SURVEYORS FILE DATA
DO NOT REMOVE FROM OFFICE

Scale 1" = 200'

CLAY COUNTY
 COUNTY SURVEYOR
 DON E. GARRETT

- — Found 5/8" Iron Rod
- — Set 5/8" Iron Rod

Fd. BRASS CAP
 4" Madrone Bears N69°W 21.6'
 16" Cedar " S86°E 140.7'



Fd. STONE
 NW Corner
 DLC 52
 Oak Bears N04°30'E -100'
 (Shows Scribing)

REGISTERED
 OREGON
 LAND SURVEYOR
Don E. Garrett
 JULY 14, 1961
 DON E. GARRETT
 532

Curve Data Shown For Centerline Radius Only

Note:
 This map replaces C.S. 55/181 which is voided.