

COUNTY SURVEYORS FILE DATA
DO NOT REMOVE FROM OFFICE

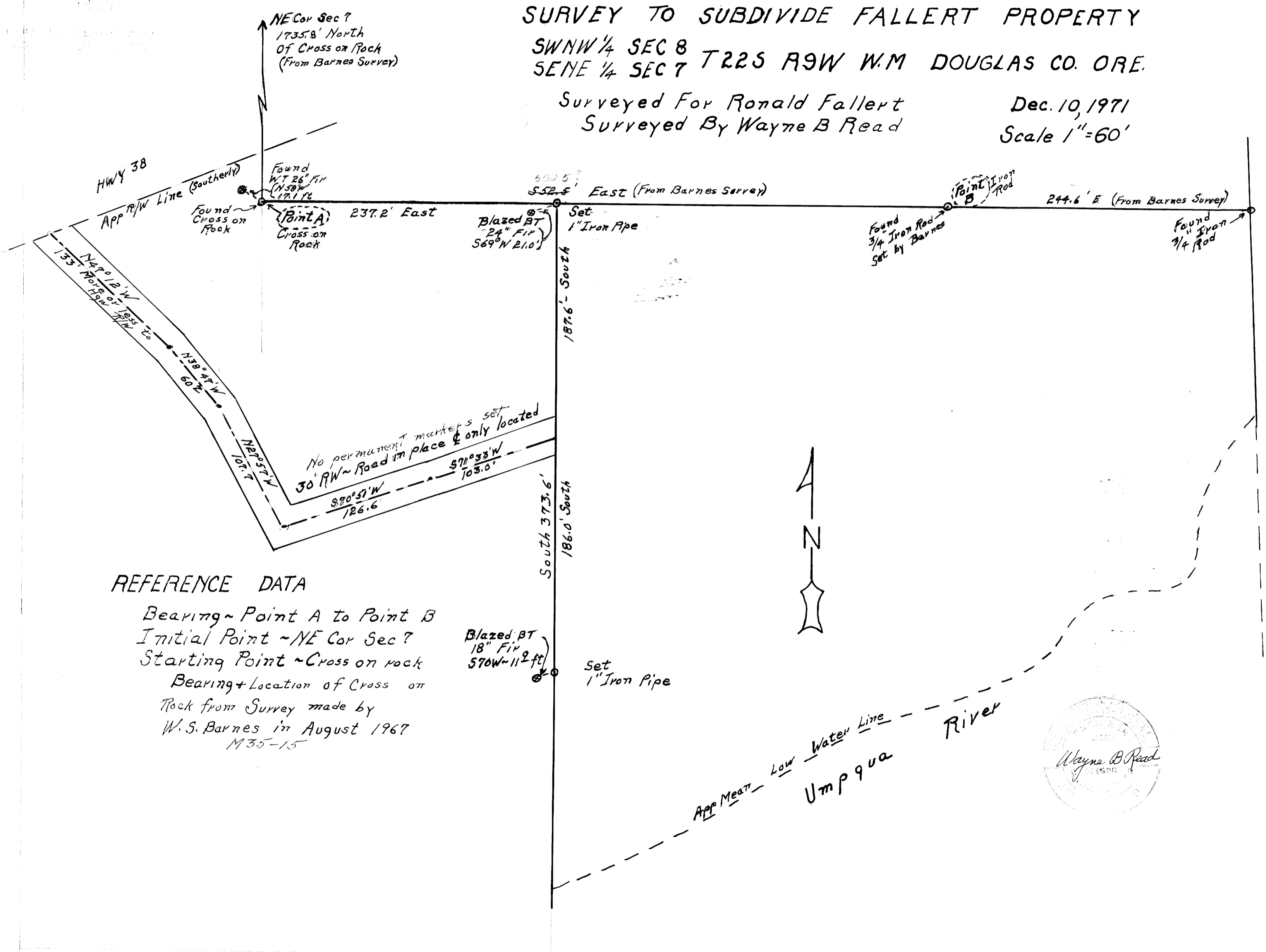
M 44-12

SURVEY TO SUBDIVIDE FALBERT PROPERTY

SWNW 1/4 SEC 8
SENE 1/4 SEC 7 T22S R9W W.M DOUGLAS CO. ORE.

Surveyed For Ronald Fallert
Surveyed By Wayne B Read

Dec. 10, 1971
Scale 1"=60'



REFERENCE DATA

Bearing ~ Point A to Point B
 Initial Point ~ NE Cor Sec 7
 Starting Point ~ Cross on rock
 Bearing + Location of Cross on
 Rock from Survey made by
 W. S. Barnes in August 1967
 M35-15



M 44-12