

COUNTY SURVEYORS FILE DATA  
DO NOT REMOVE FROM OFFICE

SURVEY IN SEC. 21, T23S, R4W, W.M., DOUGLAS CO., OREGON  
Surveyed For Webb Realty by Victor M. McLind  
JUNE 1971

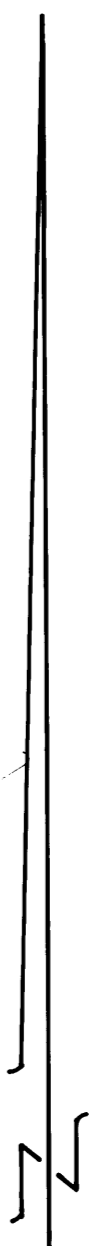
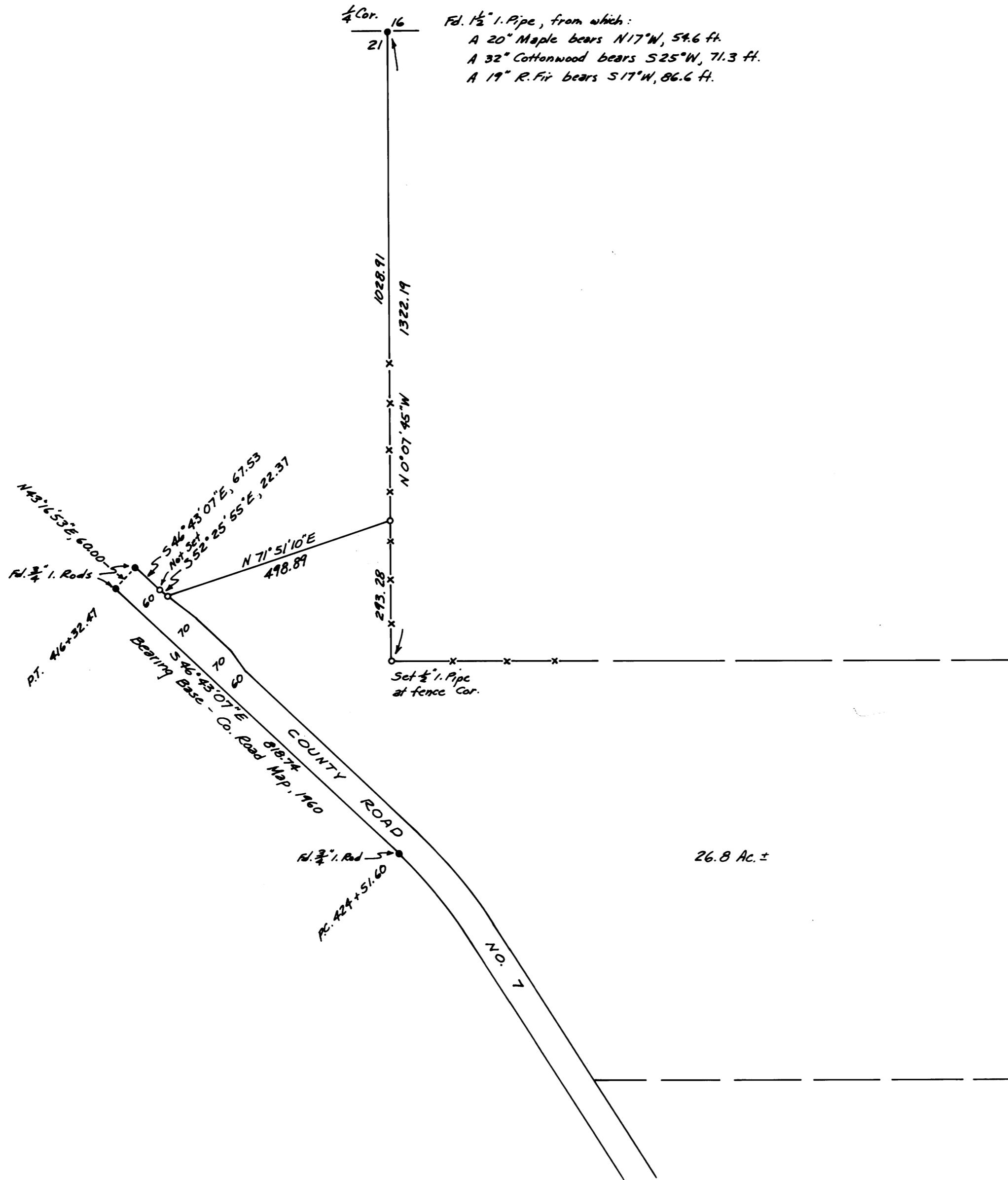
SCALE: 1" = 200'

FILED  
RECEIVED 23

JUL 21 1971

COUNTY SURVEYOR  
DOUGLAS COUNTY, ORE.

o Indicates Set  $\frac{1}{2}$ " Pipe unless otherwise noted



REGISTERED  
OREGON  
LAND SURVEYOR  
Victor M. McLind  
JULY 17, 1970  
VICTOR M. MCLIND  
934

43-9

173-7