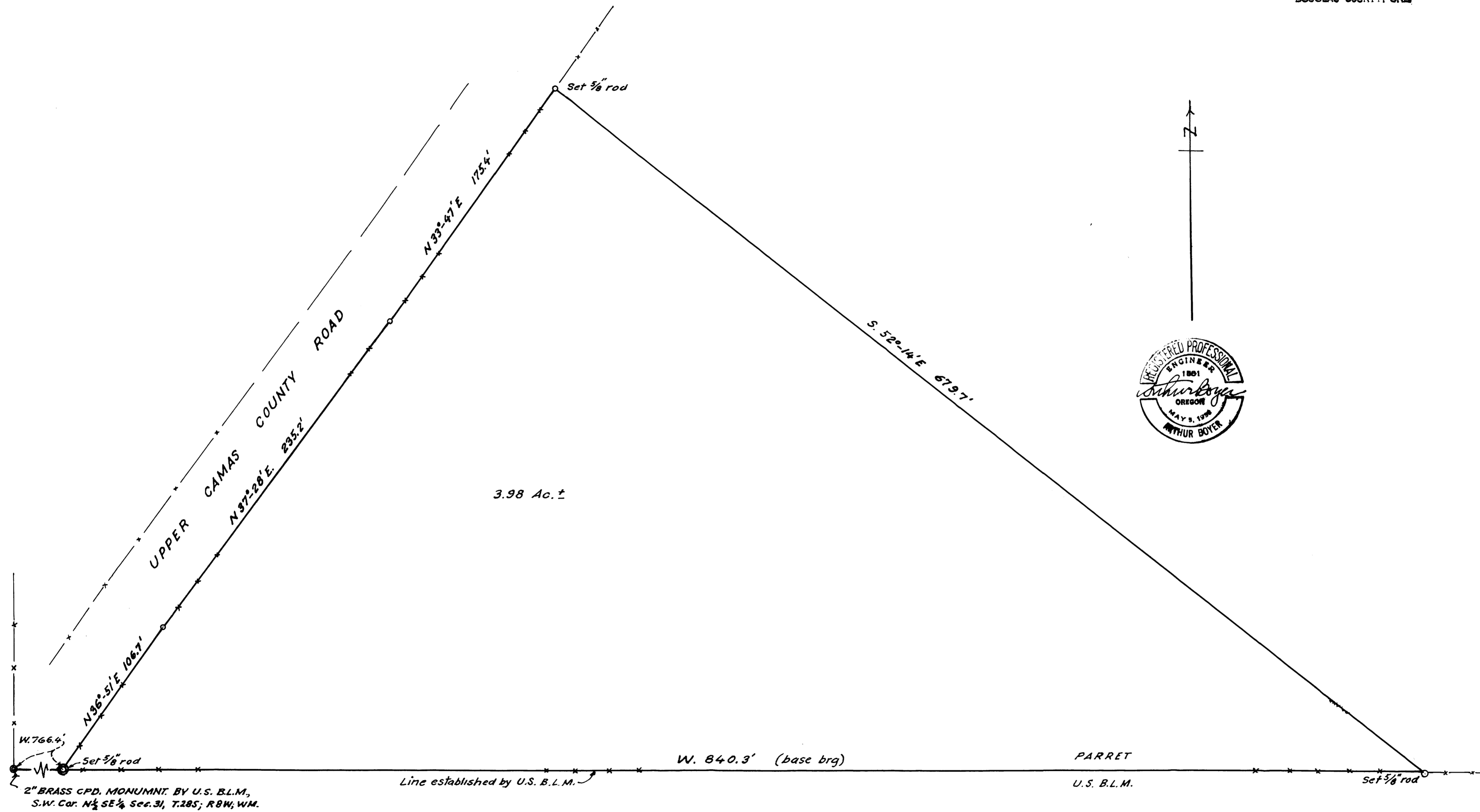


FILED *AB*
 RECEIVED *AB*
 JUL 14 1971
 COUNTY SURVEYOR
 DOUGLAS COUNTY, ORE.

M 43 - 8



3.98 Ac. ±

2" BRASS CPD. MONUMNT. BY U.S. B.L.M.,
 S.W. Cor. N½ SE¼ Sec. 31, T.28S; R.8W; WM.

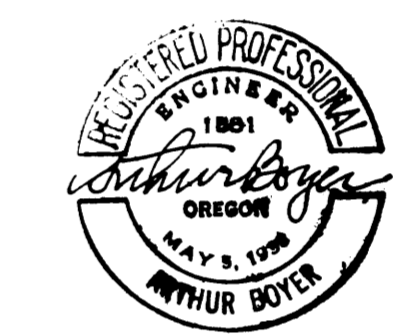
Line established by U.S. B.L.M.

W. 840.3' (base brq)

PARRET
 U.S. B.L.M.

PORTION OF PARRET RANCH
 IN N½ SE¼ SEC. 31, T.28S; R.8W; WIL. MER.
 DOUGLAS COUNTY, ORE.

JULY, 1971 AB. 1" = 40 FT.



COUNTY SURVEYORS FILE DATA
 DO NOT REMOVE FROM OFFICE

M 43 - 8