

COUNTY SURVEYORS FILE DATA
DO NOT REMOVE FROM OFFICE

RECEIVED
JUL 14 1971

CITY SURVEYOR
CLATSOP COUNTY, OREGON

SURVEYED FOR PROPERTY CORNERS

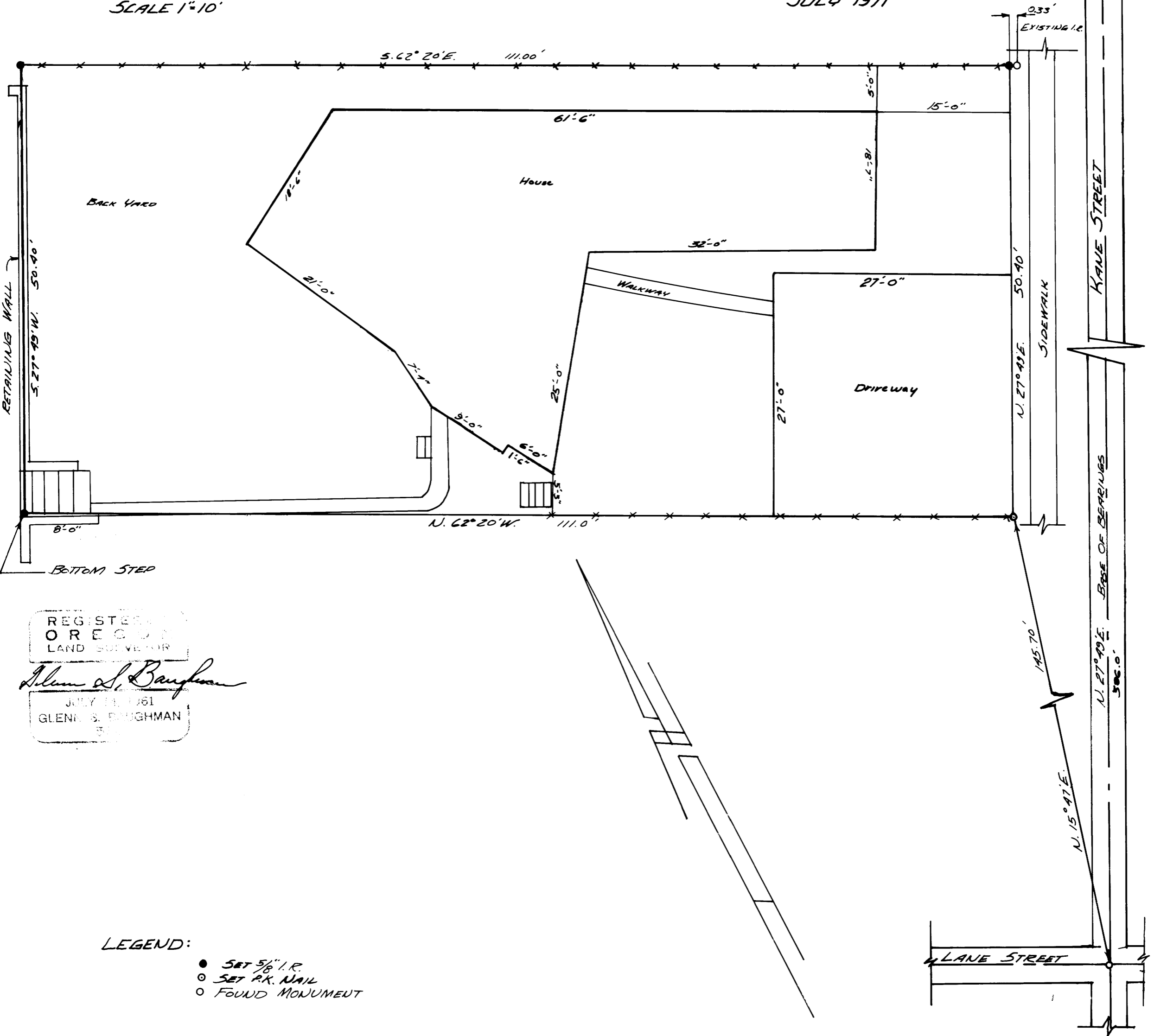
LOT 2, BLOCK 47 ROSEBURG
SITUATED IN SEC 19, T.27S., R.65 W.W.M.

SURVEY FOR BYRON WOODRUFF

SURVEY BY BAUGHMAN SURVEYING SERVICE

SCALE 1"=10'

JULY 1971



REGISTERED
OREGON
LAND SURVEYOR

Glenn S. Baughman

JULY 14, 1971
GLENN S. BAUGHMAN

LEGEND:

- SET 5/8" I.R.
- SET P.K. NAIL
- FOUND MONUMENT