

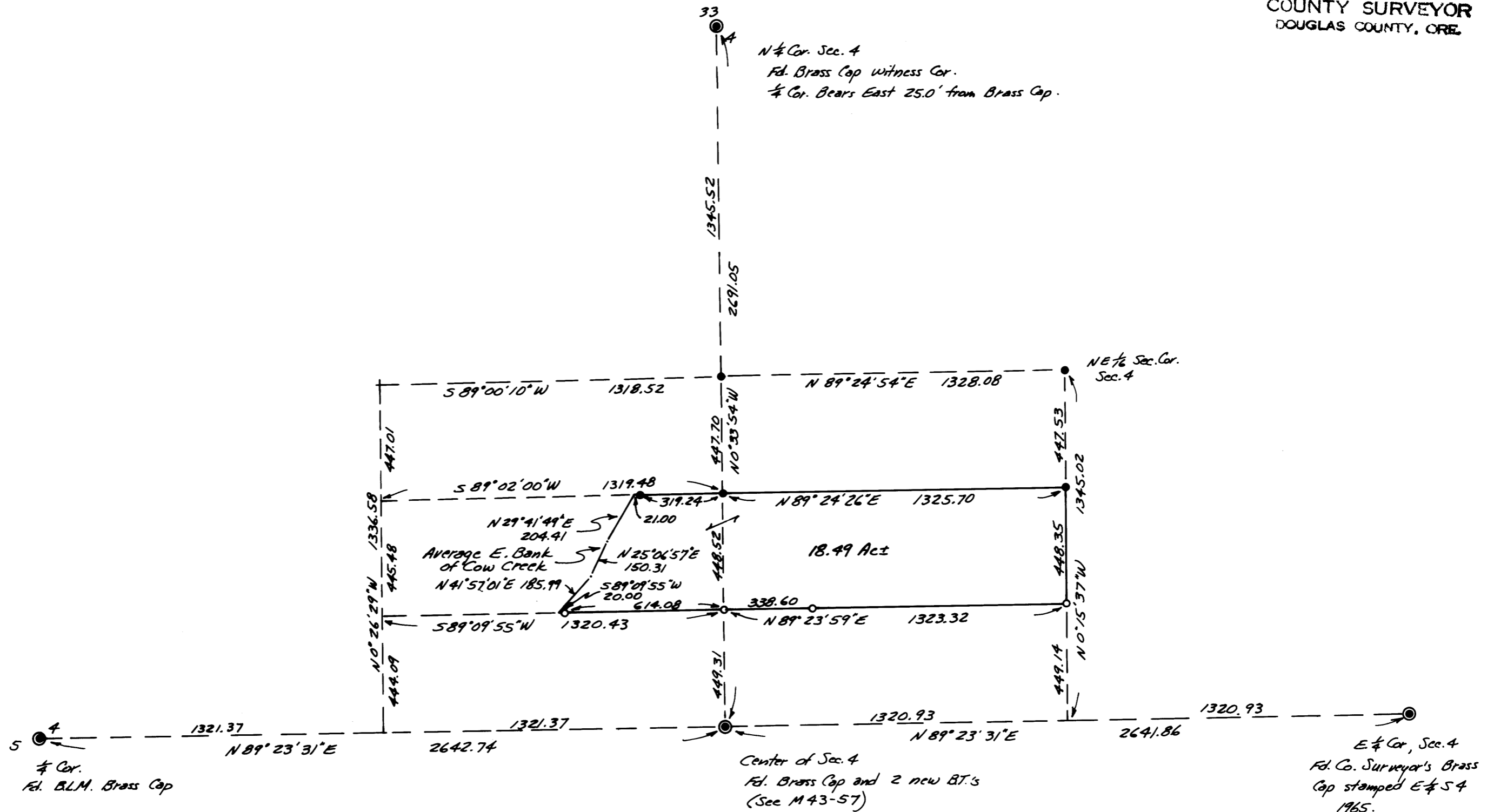
SURVEY IN SECTION 4, T32S, R4W, W.M., DOUGLAS COUNTY, OREGON  
 Surveyed for Rudolph Lingenfelder by Victor M. McLind  
 OCTOBER 1971

SCALE: 1" = 400'

Bearings Based on Solar Observation Sept. 17, 1971

- Indicates Found  $\frac{5}{8}$ " I. Rod (See M 43-57)
- Indicates Set  $\frac{5}{8}$ " I. Rod

FILED *[Signature]*  
 RECEIVED  
 NOV 1 1971  
 COUNTY SURVEYOR  
 DOUGLAS COUNTY, ORE.



COUNTY SURVEYORS FILE OFFICE  
 DO NOT REMOVE FROM OFFICE

REGISTERED  
**OREGON**  
 LAND SURVEYOR  
*Victor M. McLind*  
 JULY 17, 1970  
 VICTOR M. MCLIND  
 934

MAP FILE M 43 - 68

MAP FILE M 43 - 68