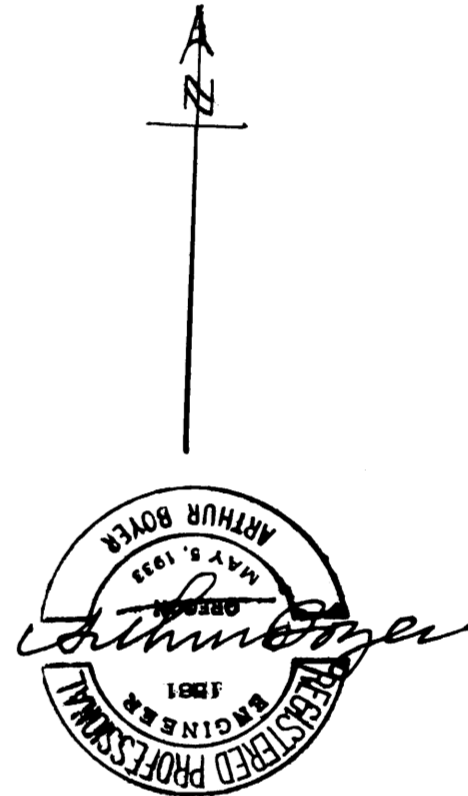
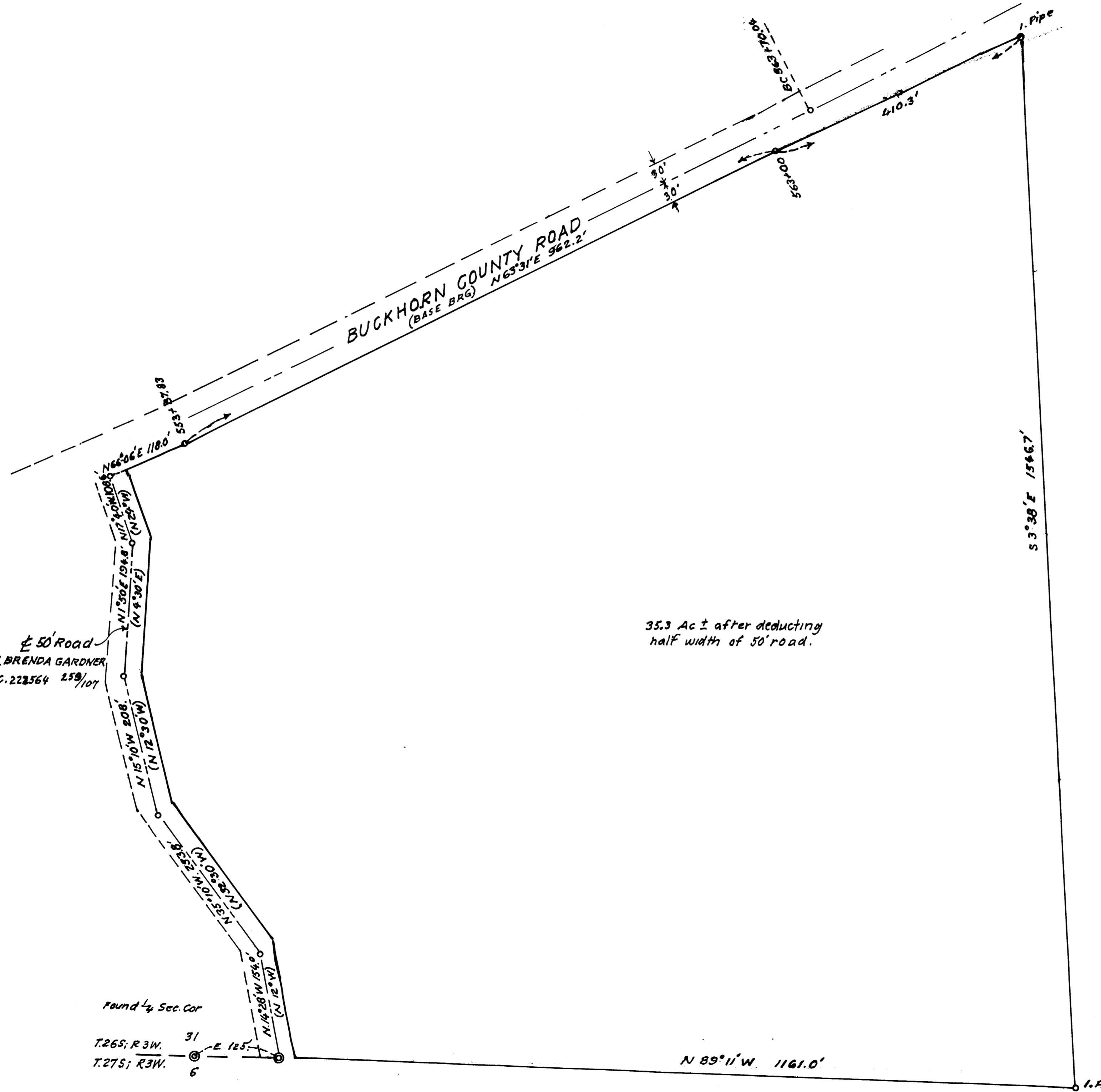


FILED
RECEIVED
MAY 21 1971
COUNTY SURVEYOR
DOUGLAS COUNTY, ORE.



35.3 Ac ± after deducting
half width of 50' road.

DO NOT REMOVE FROM OFFICE
GEO. CASE BEER TO HAROLD BARKER
PART SEC. 31, T.26S; R.3W., WIL. MER
DOUGLAS COUNTY, ORE.
MAY, 1970 J.A.B. 1" = 100 FT.

Found 4. Sec. Cor
T.26S; R.3W. 31
T.27S; R.3W. 6