

SURVEY IN LOT 10, BLOCK 2, PLAT "O", S.L. & W. CO.
SECTION 19, T25S, R5W, W.M., DOUGLAS COUNTY, ORE.

Surveyed for E.A. Barnes by Victor M. McLind
September 1971

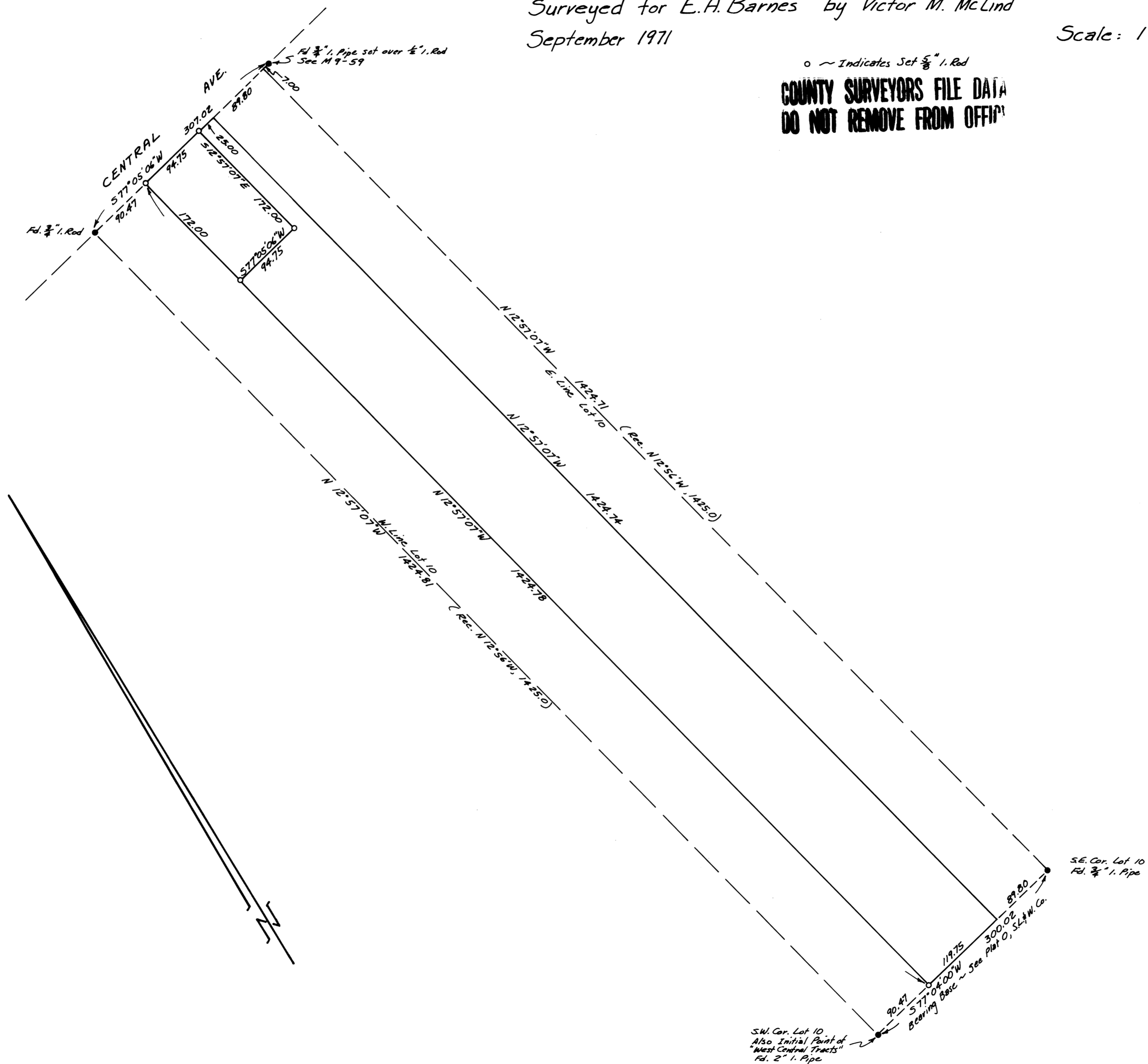
Scale: 1" = 100'

o ~ Indicates Set $\frac{5}{8}$ " I. Rod
**COUNTY SURVEYORS FILE DATA
DO NOT REMOVE FROM OFFICE**

FILED
RECEIVED

OCT 13 1971

COUNTY SURVEYOR
DOUGLAS COUNTY, ORE.



REGISTERED
SURVEYOR
Victor M. McLind
VICTOR M. McLIND
1971