

SURVEY TO SET LOT CORNERS IN BLOCK 30, AMENDED PLAT OF THE TOWNSITE OF SUTHERLIN, DOUGLAS COUNTY, OREGON

Surveyed for Bill Leenders

by Victor M. McLind

October 1971

COUNTY SURVEYORS FILE DATA  
DO NOT REMOVE FROM OFFICE

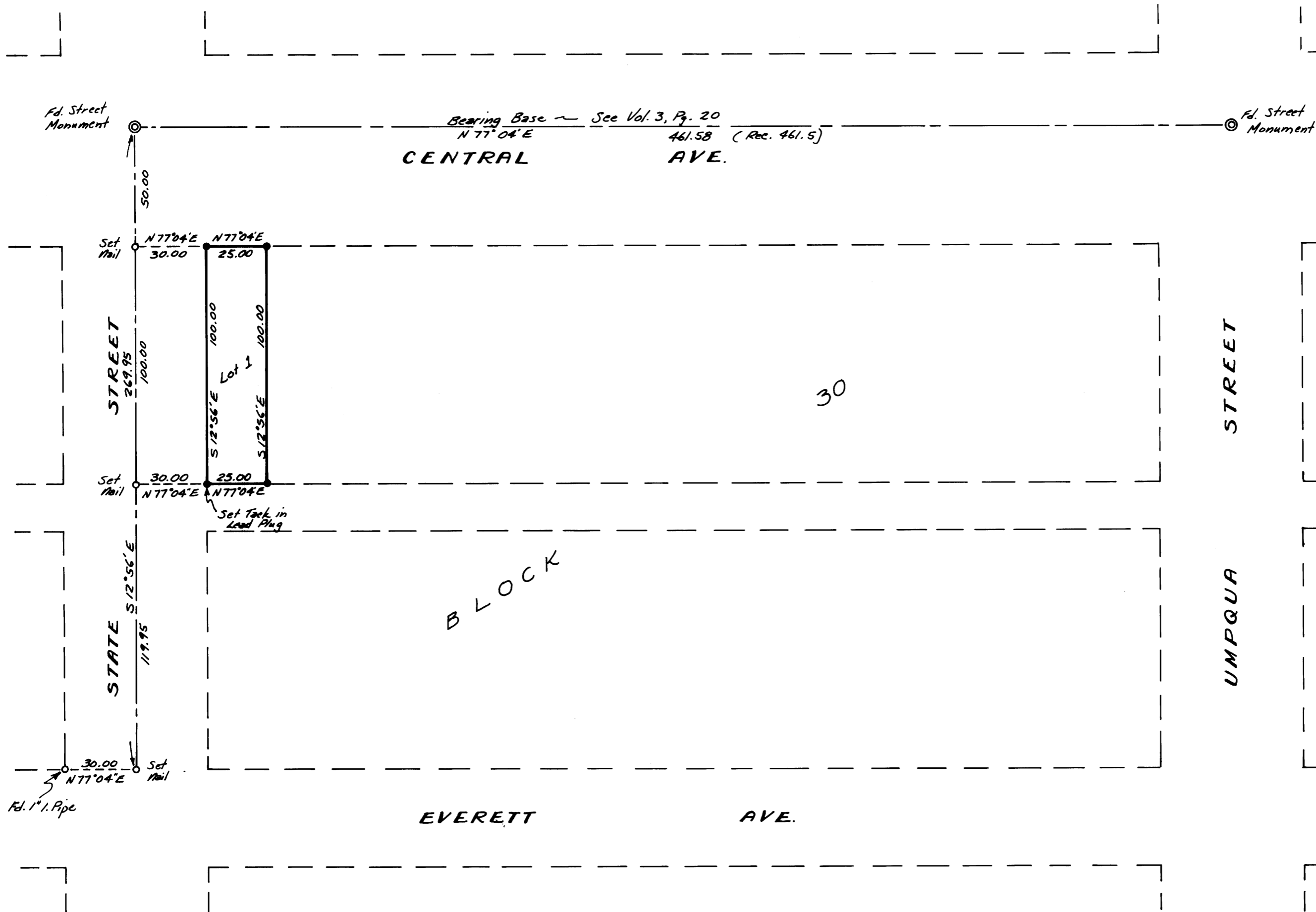
Scale: 1" = 40'

•~Indicates Set  $\frac{5}{8}$ " I. Rod, Unless Otherwise Noted.

FILED  
RECEIVED

OCT 13 1971

COUNTY SURVEYOR  
DOUGLAS COUNTY, ORE.



REGISTERED  
OREGON  
LAND SURVEYOR

*Victor M. McLind*

JULY 17 1970  
VICTOR M. MCLIND  
934