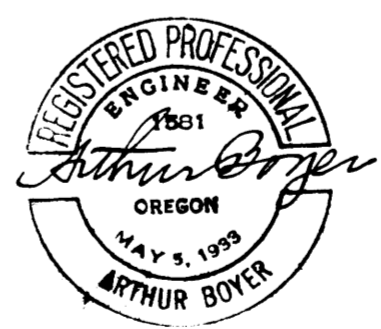
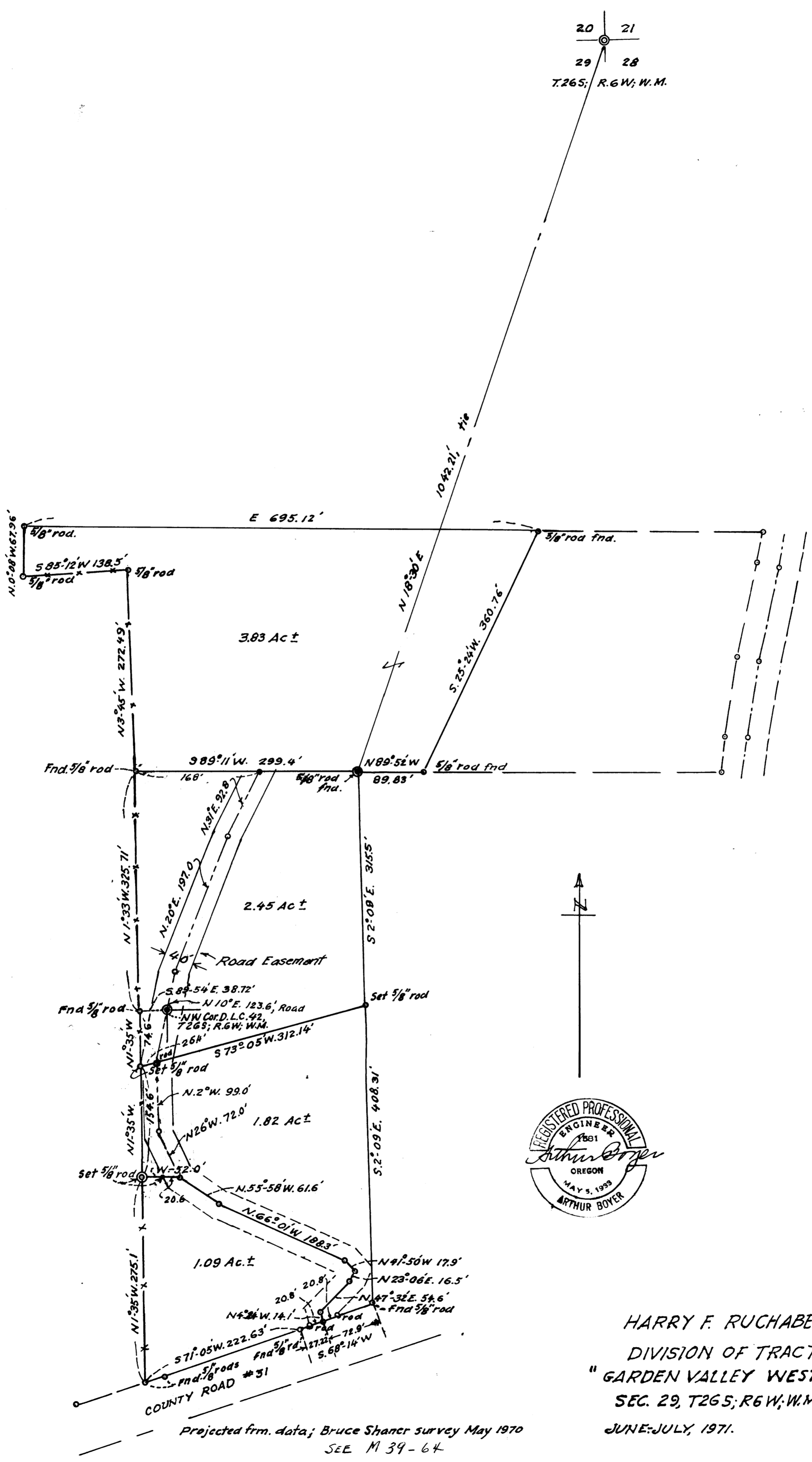


JUL 7 1971

COUNTY SURVEYOR DOUGLAS COUNTY, ORE.



HARRY F. RUCHABER & WF  
 DIVISION OF TRACT 19, (9.19 ac.±)  
 "GARDEN VALLEY WEST, OREGON LTD"  
 SEC. 29, T26S; R6W; W.M.; DOUGLAS CTY, ORE.  
 JUNE-JULY, 1971.

1"=100ft

Projected from data; Bruce Shaner survey May 1970  
 SEE M 39-64

COUNTY SURVEYORS FILE DATA  
 DO NOT REMOVE FROM OFFICE