

SURVEY IN SECTION 4, T32S, R4W, W.M., DOUGLAS COUNTY, OREGON

Surveyed for Rudolph Lingenfelder by Victor M. McLind

OCTOBER 1971

Bearings Based on Solar Observation taken September 17, 1971

o ~ Indicates Set $\frac{5}{8}$ " I. Rod

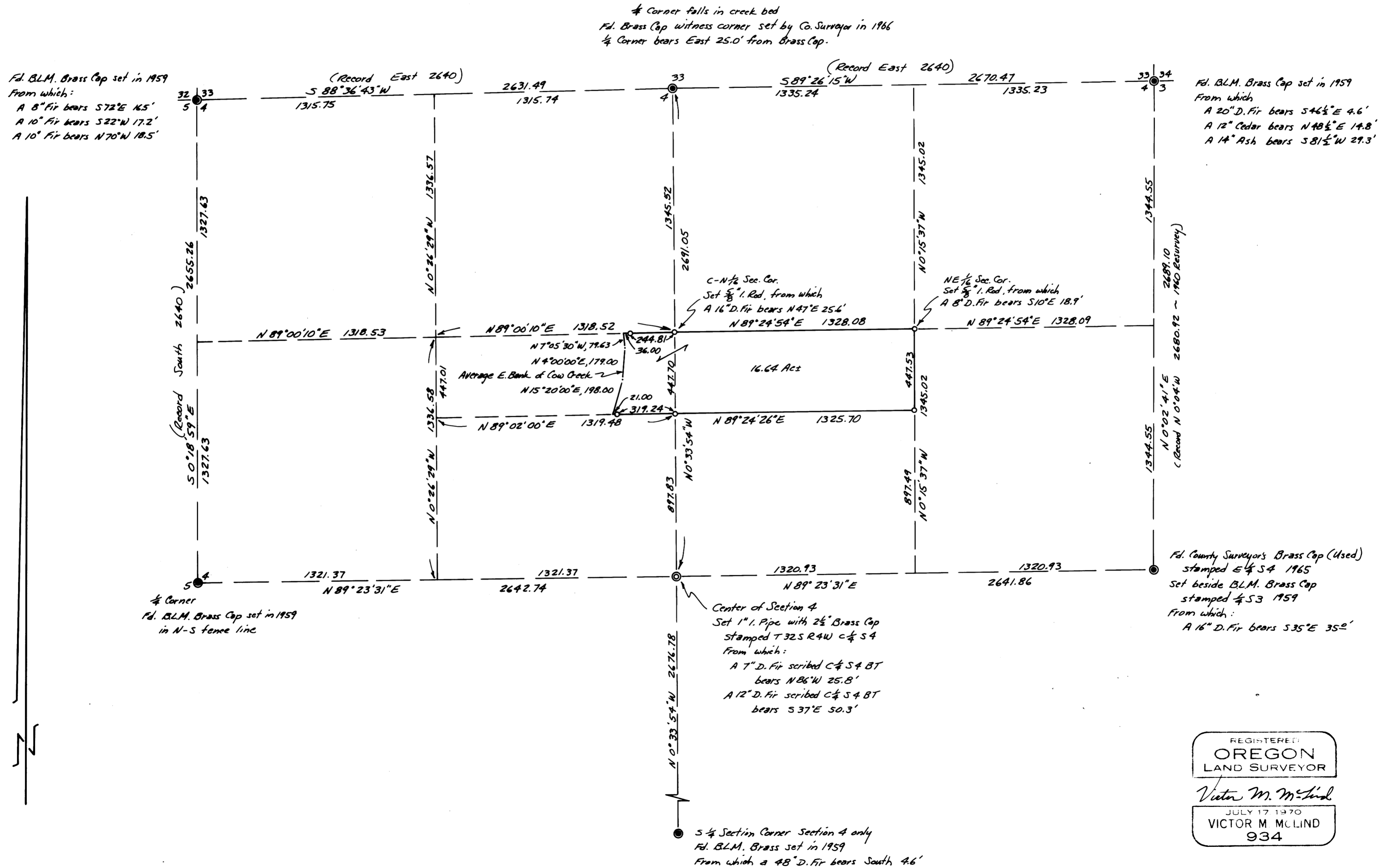
SCALE: 1" = 400'

COUNTY SURVEYORS FILE DA.
DO NOT REMOVE FROM OFFICE

FILED
RECEIVED

OCT 12 1971

COUNTY SURVEYOR
DOUGLAS COUNTY, ORE.



MAP FILE M.43-57

MAP FILE M.43-57