

COUNTY SURVEYORS FILE
DO NOT REMOVE FROM OFFICE

SURVEY FOR

UNITED STATES OF AMERICA

T 20S, R 10 & 11W, W.M.

DOUGLAS COUNTY, OREGON

FILED
RECEIVED

SEP 21 1971

COUNTY SURVEYOR
DOUGLAS COUNTY, ORE

C. S. File No. 55/201
MAP FILE M. 43 - 56

SCALE 1" = 1000'

REVISES C. S. 55 - 201

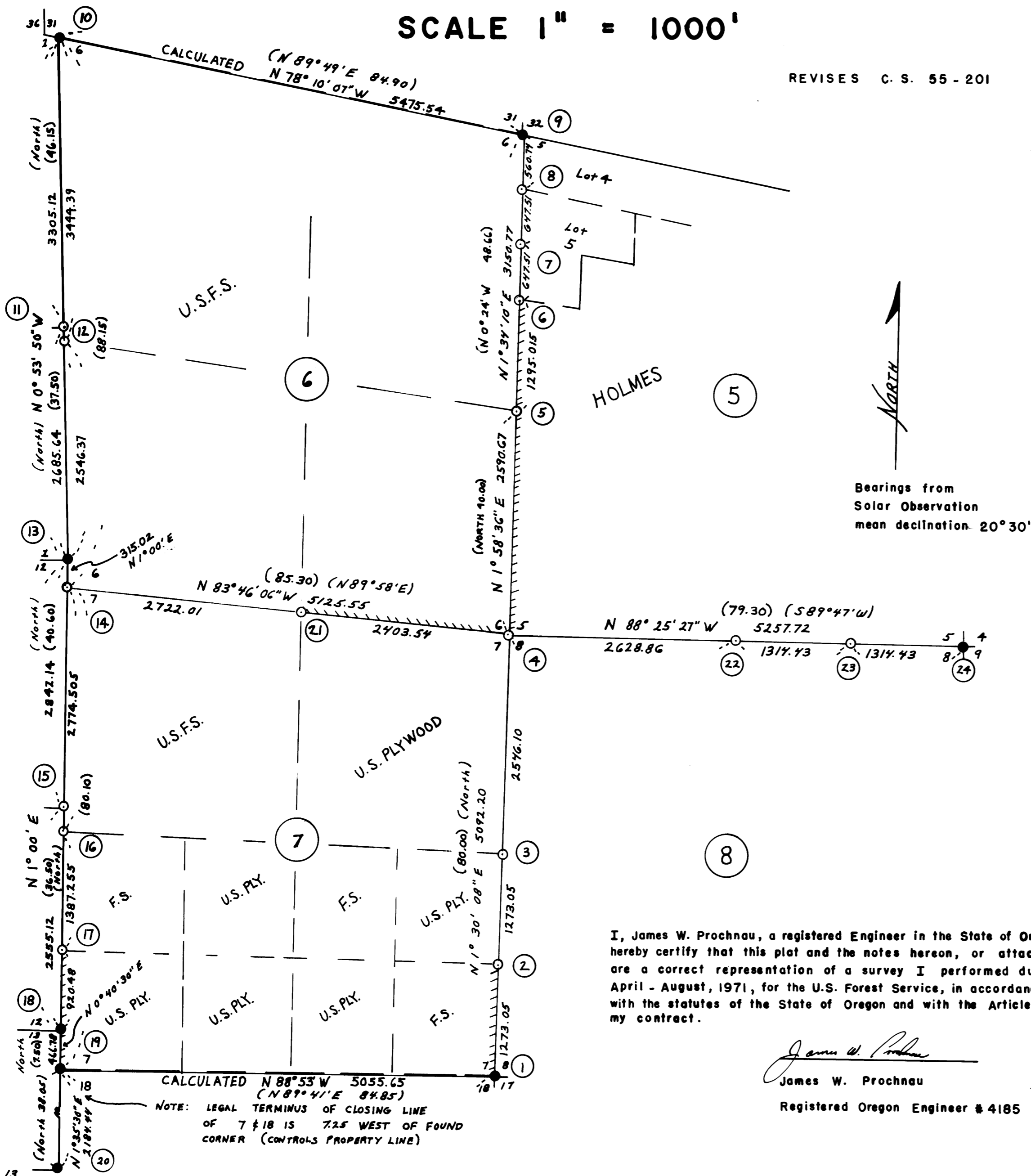
AUGUST 31, 1971

PROJECT NAME - SULPHUR CADASTRAL SURVEY NO. 1-71
CONTRACT NO. - 0031409
FIELD BOOK REF. - 0031409 - BOOKS 1, 2, 3

All bronze caps set are 2 1/2" welded on 2" x 36" galvanized pipe set 24" in ground. Marked 1971 - 4185 and corner identification.

All corners set except Nos. 4 & 13 were set by proportional measure based on original G.L.O. surveys or retracements.

Corner No. 4 was set from information obtained from Mr. Mel Holmes, Mr. Walter Camp and a 1953 U.S.F.S. survey. Detailed information on setting this corner is outlined on recorded U.S.F.S. form R6-7100-57



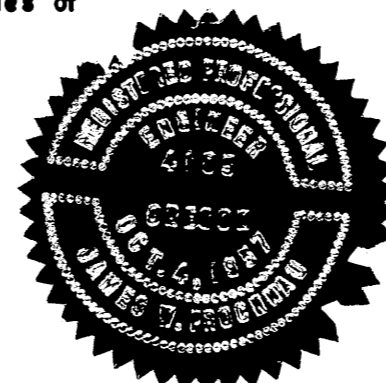
Corner Monument

Accessories - (All bearing trees)

Corner Monument	Accessories - (All bearing trees)
1 Fd bronze cap	New B.T. 20" maple bears S 79 1/2° W 10.0 ft; original 5" fir, now stub S 40° W 50.2 feet
2 Set bronze cap	Set 16" fir bears N 39° W 40.3 ft.; 12" maple bears N 56° E 45.7 ft.
3 " "	Set 10" spruce bears S 69° E 26.60 ft.; 10" maple bears S 30° W 59.43 ft.
4 " "	Set 30" fir stump bears S 74° E 59.60 ft.; 60" fir stump bears S 80° W 40.78 ft.; 6" alder bears N 54° W 10.80 ft.; 24" spruce bears N 54° E 118.38 ft.
5 " "	Set 28" maple bears N 15° E 30.0 ft.; 32" hemlock bears N 44° W 80.86 ft.
6 " "	Set 30" fir bears S 10° E 38.3 ft.; 8" alder bears N 54° W 21.8 ft.
7 " "	Set 18" fir bears S 5° E 27.84 ft.; 14" fir bears N 25° W 20.1 ft.
8 " "	Set 40" fir bears S 39° W 17.3 ft.; 32" fir bears N 54° E 43.0 ft.
9 Found bronze cap	Corner & B.T.s set by W. Haines, survey recorded 1965
10 Found bronze cap	" "
11 Set bronze cap 6" below road surface	Set - 16" fir bears N 82° W 31.0 ft.; 18" fir bears N 57° W 42.18 ft.
12 Set bronze cap	Set 28" fir bears N 40° E 24.1 ft.; 20" fir bears N 24° E 34.6 ft.
13 " "	Fd. original maple B.T. and fir (now windfall)
14 Set bronze cap	Set 24" fir bears N 30° W 75.29 ft.; 18" fir bears S 3° W 23.93 ft.
15 " "	Set 16" fir bears N 60° E 72.25 ft.; 18" fir bears S 49° E 47.59 ft.
16 " "	Set 32" fir bears S 66° W 33.9 ft.; 20" fir bears N 73° W 29.10 ft.
17 " "	Set 22" fir bears N 29° E 49.4 ft.; 14" fir bears N 78° E 75.54 ft.
18 Found bronze cap w.c. Set by Douglas Co.	Set 62" fir bears S 23° E 36.55 ft.; 54" fir bears N 5° E 13.50 ft.
19 " "	Cap is 10.00 feet West of original corner tree - new B.T. - 40" Cedar bears N 26° W 18.5 ft.
20 None	New B.T. 8" hemlock bears N 45° E 39.2 ft.
21 Set bronze cap	Fd. original Bearing Tree tagged by U.S. F.S. - now windfall
22 " "	Set 26" fir stump bears S 52° E 13.4 ft.; Set 18" fir stump bears N 72° E 28.23 feet
23 " "	Set 12" fir bears S 78° W 92.5 ft.; 6" fir bears N 36° W 90.7 ft.
24 Found bronze cap	Set 34" maple bears N 20° W 544.2 ft.; 32" alder bears S 24° E 194.7 ft.
	Set in 1952 - 4 B.T.s

I, James W. Prochnau, a registered Engineer in the State of Oregon, hereby certify that this plat and the notes hereon, or attached, are a correct representation of a survey I performed during April - August, 1971, for the U.S. Forest Service, in accordance with the statutes of the State of Oregon and with the Articles of my contract.

James W. Prochnau
Registered Oregon Engineer # 4185



- LEGEND
- Corners found
 - Corners set
 - //// Property line marked with 6' iron posts & U.S.F.S. signs

C.S. File No. 55/201
MAP FILE M. 43 - 56

1/4 SEC. 13