

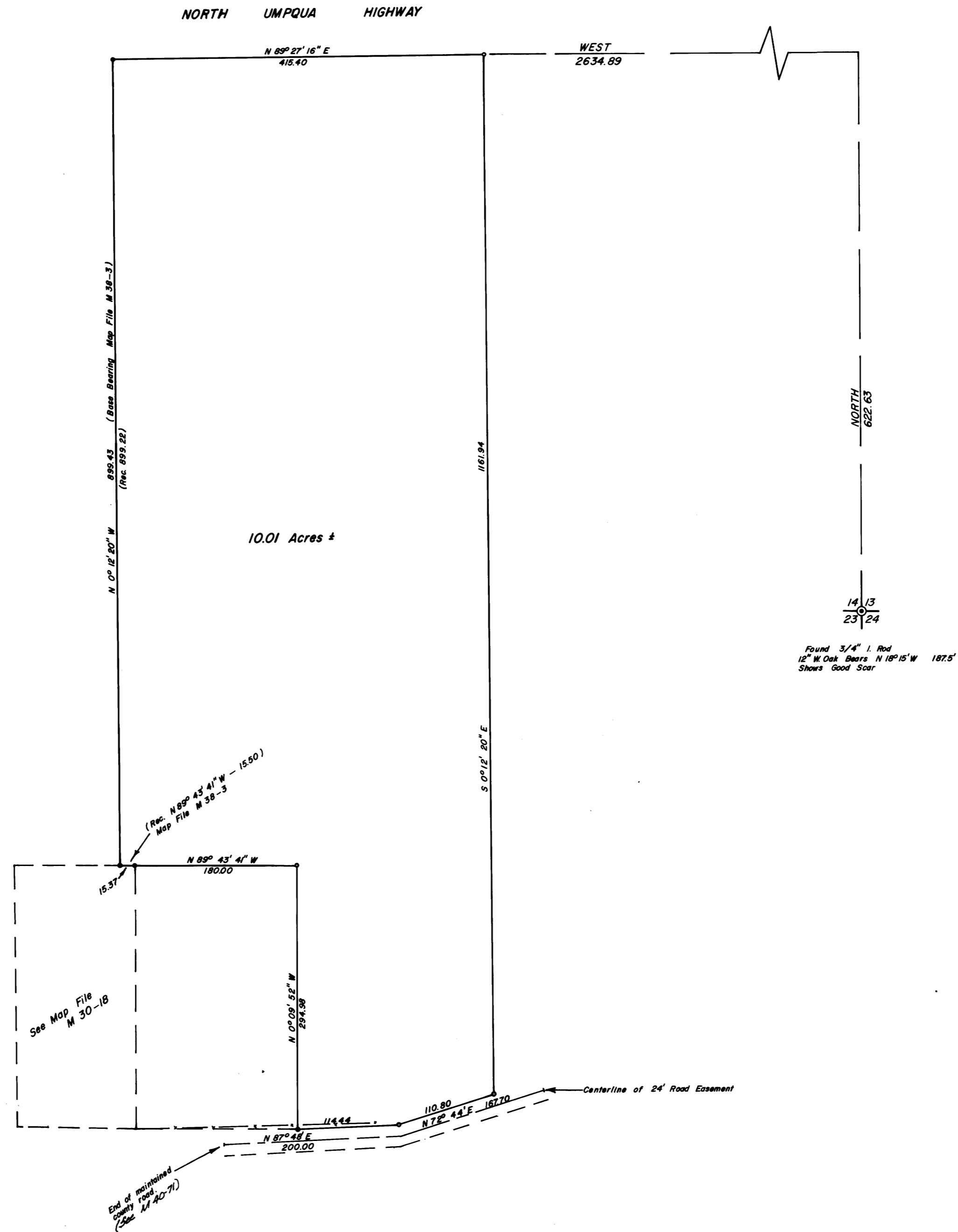
SURVEY IN SECTIONS 14 & 23, TOWNSHIP 26 SOUTH, RANGE 4 WEST, WILLAMETTE MERIDIAN
 Surveyed for John Connine by Don E. Garrett
 September, 1971

COUNTY SURVEYORS FILE OFF.
 DO NOT REMOVE FROM OFF.

Scale 1" = 100'

- — Found 5/8" Iron Rod
- — Set 5/8" Iron Rod

FILED *LL*
 RECEIVED *LL*
 JUL 11 1971
 COUNTY SURVEYOR
 POLK COUNTY, OREGON



REGISTERED
 OREGON
 LAND SURVEYOR
Don E. Garrett
 JULY 14, 1961
 DON E. GARRETT
 544

MAP FILE M 33-55

MAP FILE M 33-55