

FILED  
RECEIVED

OCT 7 1971

COUNTY SURVEYOR  
DOUGLAS COUNTY, ORE

MAP FILE M43-54

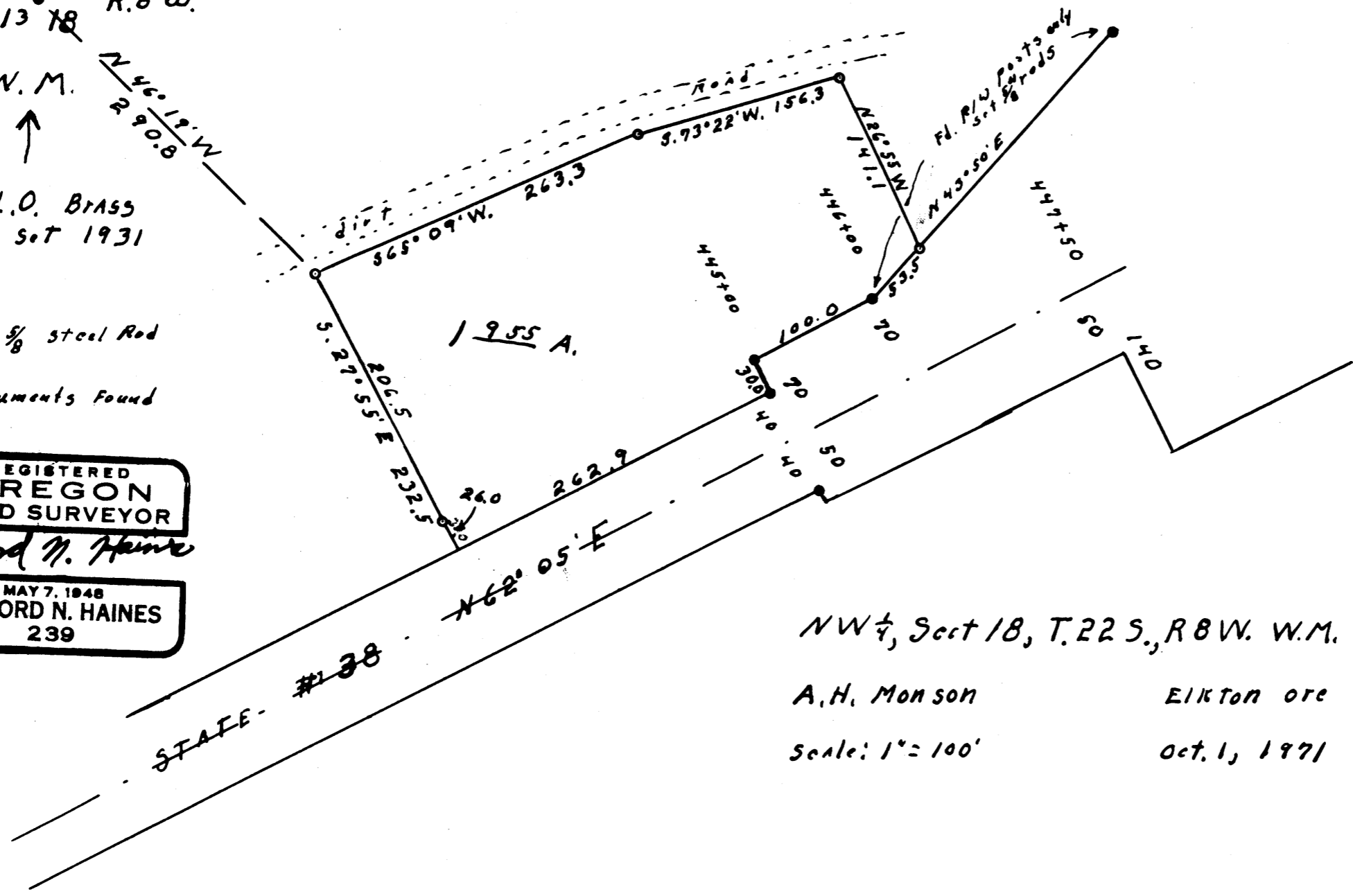
T.22S.  
R.9W. 12 7  
13 18 R.8W.

W.M.  
N 46° 19' W  
290.8

Fd G.L.O. Brass  
CAP set 1931

- Set 5/8 Steel Rod
- Monuments Found

REGISTERED  
OREGON  
LAND SURVEYOR  
*Wilford N. Haines*  
MAY 7, 1948  
WILFORD N. HAINES  
239



STATE - #38

NW 1/4, Sect 18, T.22 S., R.8 W. W.M.  
A.H. Monson  
Scale: 1" = 100'

Elkton Ore  
Oct. 1, 1971

FILED  
OFFICE

MAP FILE M43-54