

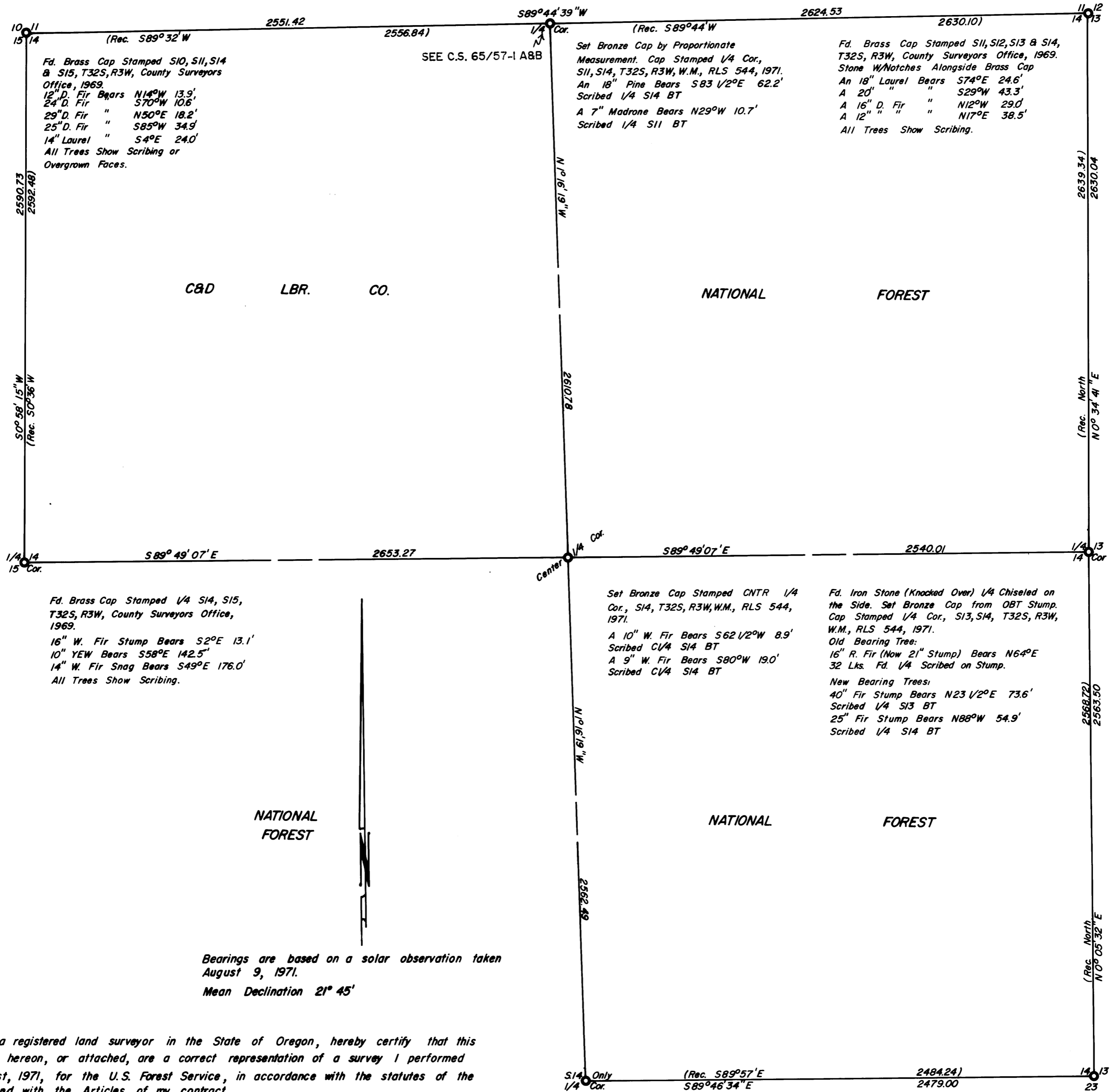
Survey For The  
UNITED STATES OF AMERICA

Section 14, Township 32 South, Range 3 West, Willamette Meridian

September 7, 1971

Scale 1" = 400'

TILLER LAND SURVEY NO. 6 CONTRACT NO. 003226 N.  
Field Books Referenced Under Contract No. 003226 N. Books 1 & 2.  
Monuments set consist of a 2"X30" galvanized iron pipe, flared at the bottom, with a 3" bronze cap welded to the top.



Fd. Brass Cap Stamped S10, S11, S14 & S15, T32S, R3W, County Surveyors Office, 1969.  
 12" D. Fir Bears N14°W 13.9'  
 24" D. Fir " S70°W 10.6'  
 29" D. Fir " N50°E 18.2'  
 25" D. Fir " S85°W 34.9'  
 14" Laurel " S4°E 24.0'  
 All Trees Show Scribing or Overgrown Faces.

SEE C.S. 65/57-1 ABB

Set Bronze Cap by Proportionate Measurement. Cap Stamped 1/4 Cor., S11, S14, T32S, R3W, W.M., RLS 544, 1971.  
 An 18" Pine Bears S83 1/2°E 62.2'  
 Scribed 1/4 S14 BT  
 A 7" Madrone Bears N29°W 10.7'  
 Scribed 1/4 S11 BT

Fd. Brass Cap Stamped S11, S12, S13 & S14, T32S, R3W, County Surveyors Office, 1969.  
 Stone W/Notches Alongside Brass Cap  
 An 18" Laurel Bears S74°E 24.6'  
 A 20" " " S29°W 43.3'  
 A 16" D. Fir " N12°W 29.0'  
 A 12" " " N17°E 38.5'  
 All Trees Show Scribing.

Fd. Brass Cap Stamped 1/4 S14, S15, T32S, R3W, County Surveyors Office, 1969.  
 16" W. Fir Stump Bears S2°E 13.1'  
 10" YEW Bears S58°E 142.5'  
 14" W. Fir Snag Bears S49°E 176.0'  
 All Trees Show Scribing.

Set Bronze Cap Stamped CNTR 1/4 Cor., S14, T32S, R3W, W.M., RLS 544, 1971.  
 A 10" W. Fir Bears S62 1/2°W 8.9'  
 Scribed C1/4 S14 BT  
 A 9" W. Fir Bears S80°W 19.0'  
 Scribed C1/4 S14 BT

Fd. Iron Stone (Knocked Over) 1/4 Chiseled on the Side. Set Bronze Cap from OBT Stump. Cap Stamped 1/4 Cor., S13, S14, T32S, R3W, W.M., RLS 544, 1971.  
 Old Bearing Tree:  
 16" R. Fir (Now 21" Stump) Bears N64°E 32 Lks. Fd. 1/4 Scribed on Stump.  
 New Bearing Trees:  
 40" Fir Stump Bears N23 1/2°E 73.6'  
 Scribed 1/4 S13 BT  
 25" Fir Stump Bears N88°W 54.9'  
 Scribed 1/4 S14 BT

NATIONAL FOREST

NATIONAL FOREST

Bearings are based on a solar observation taken August 9, 1971.  
 Mean Declination 21° 45'

I, Don E. Garrett, a registered land surveyor in the State of Oregon, hereby certify that this plat and the notes hereon, or attached, are a correct representation of a survey I performed during July - August, 1971, for the U.S. Forest Service, in accordance with the statutes of the State of Oregon and with the Articles of my contract.

REGISTERED  
OREGON  
LAND SURVEYOR  
*Don E. Garrett*  
JULY 14, 1961  
DON E. GARRETT  
544

S14 Only  
1/4 Cor. (Rec. S89°57'E 2484.24) S89°46'34"E 2479.00  
 Fd. Brass Cap Stamped 1/4 S14, T32S, R3W, County Surveyors Office 1969  
 28" Fir Stump (Burned) N22°E 15.8'  
 24" Fir Stump (Scribed) N22°W 22.4'  
 26" Fir Stump (Scribed) S22°W 15.5'  
 5/8" I. Rod Bears N41°W 10.0'  
 " " " N41°E 10.9'

Fd. Brass Cap Marked S14/S13 S23  
 T32S, R3W, County Surveyors Office, 1969  
 20" Fir Stump N6°W 19.8'  
 36" Hemlock Stump Bears North 7.8'  
 13" W. Fir Stump Bears South 14.8'