

M 43-46

REGISTERED
OREGON
LAND SURVEYOR
Donald A. Bentz
JULY 12, 1968
DONALD A. BENTZ
839

COUNTY SURVEYORS FILE
DO NOT REMOVE FROM OFFICE

FIELD SURVEY & PLAT

FOR

R.E. HJORT

PART OF LOTS 1,2,3,12,13,14
BLOCK 2, NORTH PARK ADD
CITY OF ROSEBURG, DOUGLAS
COUNTY, OREGON

BY DONALD A. BENTZ L.S.

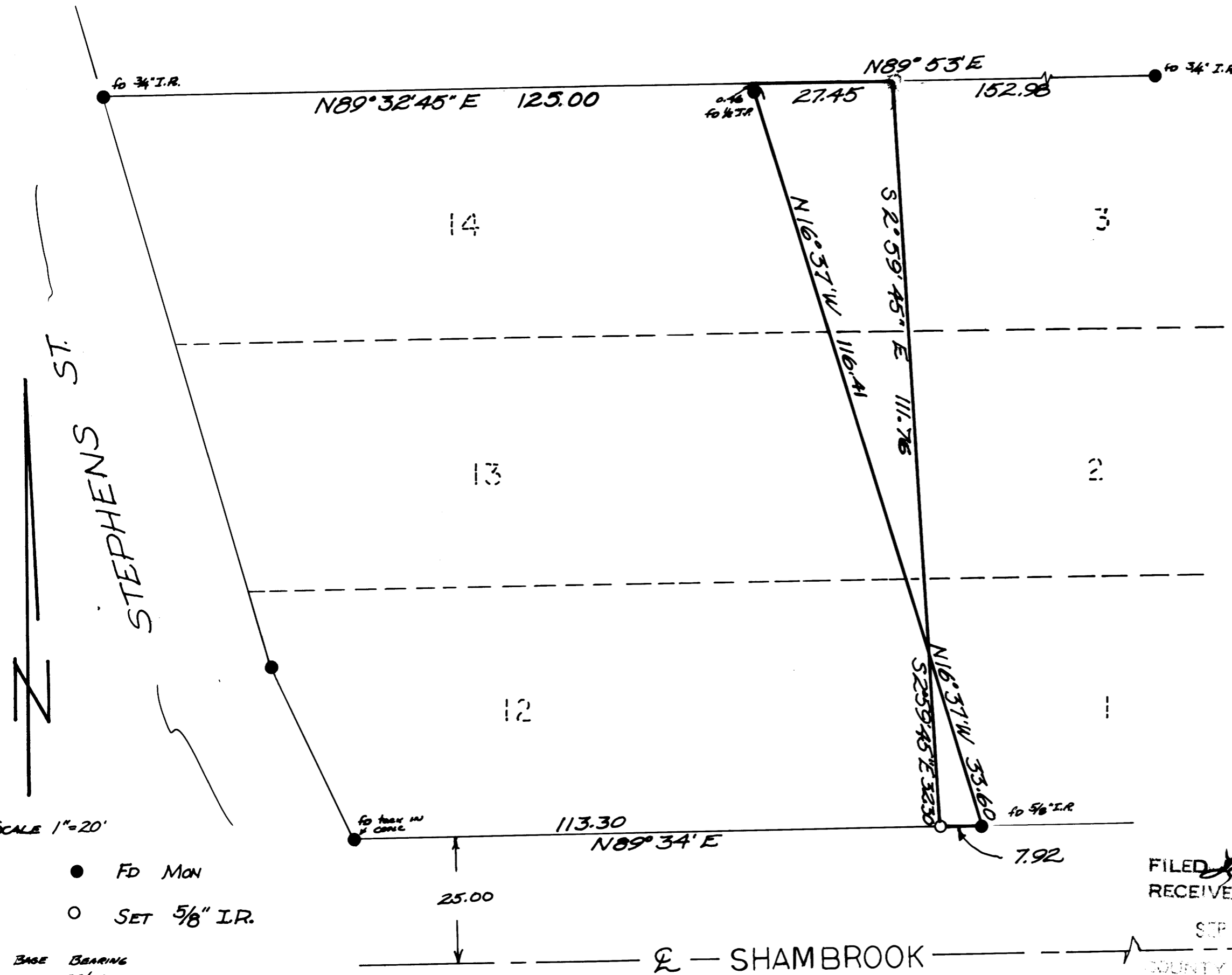
FILED
RECEIVED

SEP 16 1971

COUNTY SURVEYOR
DOUGLAS COUNTY, ORE.

to STREET
MAN.

AUG. 1971



SCALE 1"=20'

- FD MON
- SET 5/8" I.R.

BASE BEARING
C.S. 55/33

SHAMBROOK

M 43-46