

SURVEY IN NE 1/4 SEC. 4, T25S, R5W, W.M.
Surveyed for Edna Cole by Victor M. McLind
Sept. 1971

Scale: 1" = 50'

COUNTY SURVEYORS FILE DATA
DO NOT REMOVE FROM OFFICE

o Indicates Set 1/8" I. Rod

N. 1/4 Corner,
Section 4, T25S, R5W, W.M.
Fd. Stone with "+"
38" Y Oak Bears S20°W, 19.0ft.

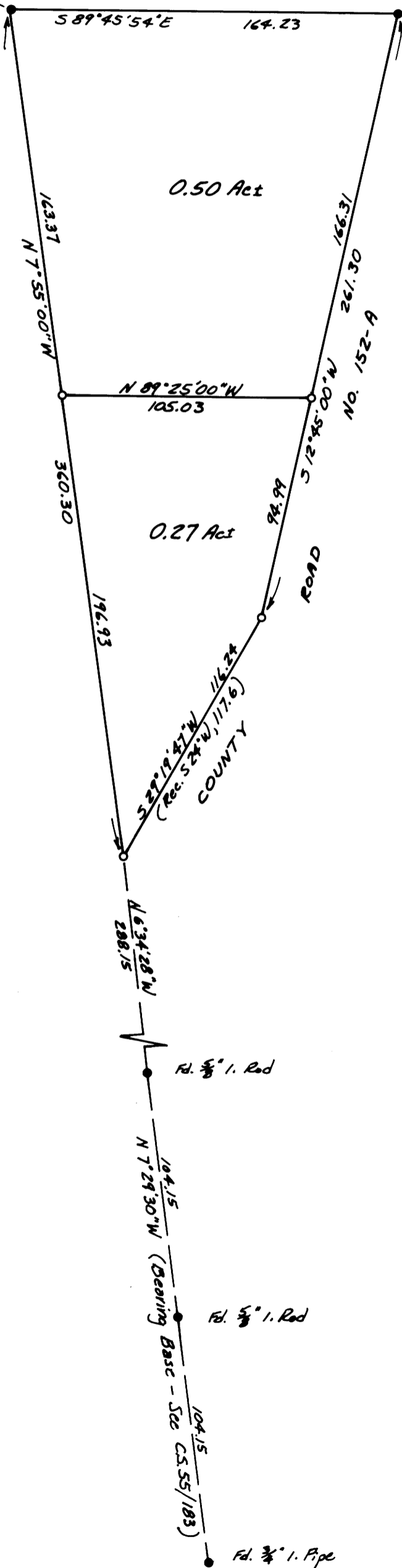
Fd. 3/8" I. Pipe

Fd. 1/2" Bolt, from which an
8" Locust Tree bears N5°E, 4.2ft.

FILED
RECEIVED

SEP 7 1971

COUNTY SURVEYOR
DEGLAS COUNTY, ORE.



REGISTERED
OREGON
LAND SURVEYOR

Victor M. McLind
1970
VICTOR M. MCLIND
934