

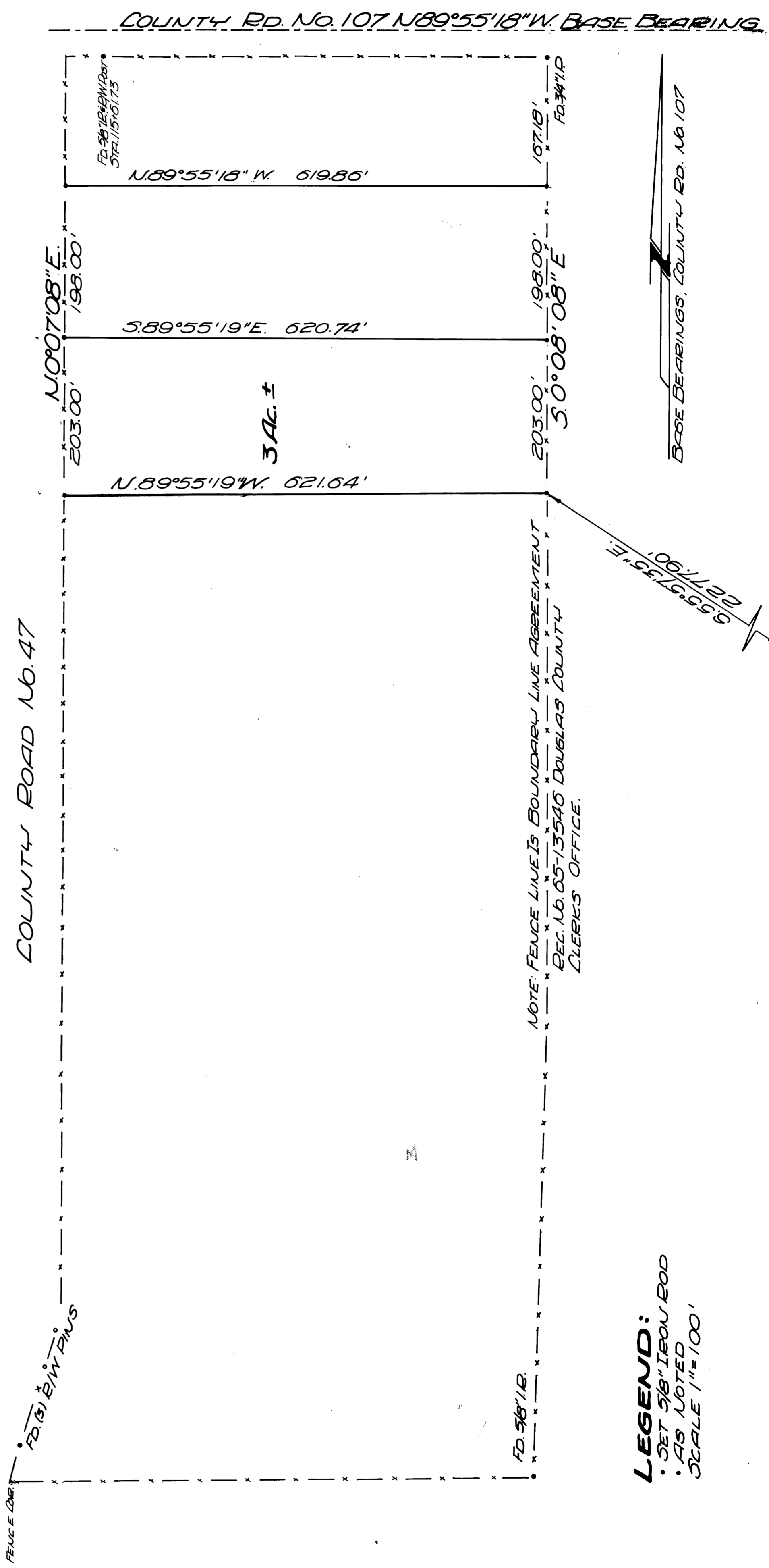
# SURVEYED FOR DEED DESCRIPTION

LOCATED IN SEC. 20, T. 28 S., R. 6 W. N. M.  
FOR GLEN F. PETERSON & JOSEPHINE B. GALLION  
BY BALUGHMAN SURVEYING SERVICE  
JULY 1971

COUNTY SURVEYORS FILE DATA  
DO NOT REMOVE FROM OFFICE

REGISTERED  
O R E G O N  
L A N D  
S U R V E Y O R

*Glenn S. Baughman*  
JULY 14, 1968  
GLENN S. BAUGHMAN  
S.R.G.



FILED  
RECEIVED

AUG 13 1971

COUNTY SURVEYOR  
DOUGLAS COUNTY, ORE.

FD 5181 B 4142 W Post  
57A/108100.47

SE CORNER JOHN COX D.L.C. #49  
FOUND BRASS CAP 10-19-72

REV. 10-19-72 E.A.S.