

COUNTY SURVEYORS FILE DATA
DO NOT REMOVE FROM OFFICE

FILED *LL*
RECEIVED

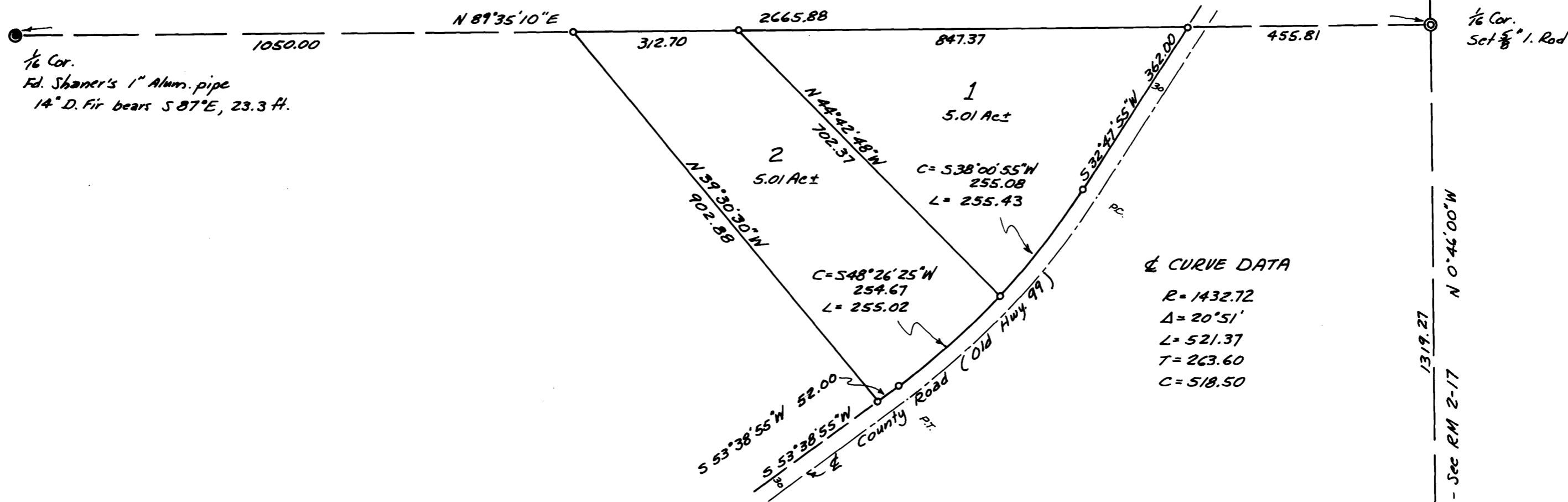
AUG 12 1971

COUNTY SURVEYOR
DOUGLAS COUNTY, ORE.

SURVEY IN SE. 1/4 SEC. 19, T 21 S, R 4 W, W.M.
Surveyed For Merl Clark by Victor M. McLind
August 1971
Scale: 1" = 200'

o Indicates Set 5/8" I. Rod.

1/4 Cor.
Fd. Shaner's 5/8" I. Rod
24" D. Fir bears N 37° W, 35.0 ft.
16" Cedar bears East, 35.1 ft.



REGISTERED
OREGON
LAND SURVEYOR
Victor M. McLind
JULY 17 1970
VICTOR M. McLIND
934

Fd Shaner's 5/8" Steel Bar
buried 6" under print.
28" D. Fir bears
S 62 1/2° W, 32.5 ft.

M 43-28

M 43-28